



# CRÈME DE LA CRÈME TWENTY TWENTY-ONE



SATURDAY - AUGUST 21ST 2021



## RSL AUCTIONS

P.O. Box 635  
Oldwick, NJ 08858  
908-823-4049  
Cell 917-991-7352  
FAX 908-823-4519  
rslauctions@yahoo.com  
rslauctionco.com

## SPECIALISTS

### Ray Haradin

Pittsburgh, PA  
Banks, Toys, Soldiers, Tiffany Lamps  
412-343-8733  
raytoys@aol.com

### Steven Weiss

New York, NY  
Banks, Toys, American Folk Art, American Art & Sculpture  
212-729-0011  
sweiss57@icloud.com

### Leon Weiss

Oldwick, NJ  
Banks, Toys, American Folk Art and Door Stops  
908-823-4049  
Cell 917-991-7352  
leonweiss@me.com

### Julian Abernethy

Sr. Auction and Computer Specialist

### Bre Day

Senior Auction Specialist  
412-841-0623  
bremarieday@gmail.com

### Angela Weiss

908-823-4049  
a.weiss@rslauctionco.com  
Office Manager, Website and Shipping Coordinator

 [Facebook.com/RSL-Auction-Company](https://www.facebook.com/RSL-Auction-Company)

 @rslauctions



## CRÈME DE LA CRÈME TWENTY TWENTY-ONE

## AUCTION #38

Saturday August 21st 2021 at 10 am Eastern Lots 1-342

## WEBSITES:

rslauctionco.com LiveAuctioneers.com or BidSpirit.com

## RSL Auctions

295 US Hwy 22 East  
Suite 204 West  
Whitehouse Station, NJ 08889

## Look for "One Salem Square" Sign

Gallery Phone: 908-823-4049

## PREVIEW:

Preview by appointment only.

Please call (908) 823-4049 to reserve a time to preview.

RSL complies with New Jersey Covid Protocols.

These protocols currently require the wearing of a mask even if fully vaccinated. Please call to reserve a spot as the attendance for this sale is presently limited.

## ABSENTEE AND PHONE BIDDING DEADLINE:

BIDS MUST BE RECEIVED BY FRIDAY, AUGUST 20th 2021

## MAIL BIDS TO:

RSL Auctions, PO Box 635, Oldwick, NJ 08858

## CALL BIDS TO:

Leon Weiss 908-823-4049 - Cell 917-991-7352

## FAX BIDS TO:

RSL Auctions ..... 908-823-4519

## PAYMENT & SHIPPING

Leon Weiss ..... 917-991-7352

## DIRECTIONS TO OUR GALLERY

295 US Hwy 22 East  
Suite 204 West  
Whitehouse Station, NJ 08889  
908-823-4049

### From New England and Northern New Jersey

Cross the Tappan Zee Bridge and continue West on 287/87 about 14 miles to 287 South. Take 287 South to Exit 21B and merge onto 78 West (Clinton). Go to Exit 24 Whitehouse/Oldwick. Turn left at the light (towards Whitehouse). Go exactly 2 miles and turn onto U.S. Highway 22 West. Go 1.4 miles, staying in the left lane and passing one traffic light (Merck Drive). Go to the second turnaround after that light and head East on U.S. Highway 22 for 150 feet. Turn right into parking lot. Sign reads "One Salem Square".

### From New York City

Lincoln or Holland Tunnel to the New Jersey Turnpike South. Travel only a few miles to Exit 14A-C. Get onto Route 78 West (Clinton) to Exit 24 (Whitehouse/Oldwick). Turn left at the light (towards Whitehouse). Go exactly 2 miles and turn onto U.S. Highway 22 West. Go 1.4 miles, staying in the left lane and passing one traffic light (Merck Drive). Go to the second turnaround after that light and head East on U.S. Highway 22 for 150 feet. Turn right into parking lot. Sign reads "One Salem Square".

### Southern New Jersey and Points South

Take New Jersey Turnpike or Garden State Parkway to 287 North. It is about 20 - 22 miles to Route 78 West (Exit 21-B). Go to Exit 24 Whitehouse/Oldwick. Turn left at the light (towards Whitehouse). Go exactly 2 miles and turn onto U.S. Highway 22 West. Go 1.4 miles, staying in the left lane and passing one traffic light (Merck Drive). Go to the second turnaround after that light and head East on U.S. Highway 22 for 150 feet. Turn right into parking lot. Sign out front reads "One Salem Square".

### Philadelphia Area

Take 95 North and cross into New Jersey. Exit for Route 31 (about 4 miles into New Jersey). Take 31 North about 20 miles to Route 78 East. (There are some traffic circles on 31 North – Always stay on 31 North until you hit Route 78 East). Take exit 18 and merge onto U.S. Highway 22 East and go 4.1 miles and turn into the parking lot. Sign out front reads "One Salem Square".

### From the West

Take 78 East and cross into New Jersey. Take Exit 18 and merge onto U.S. Highway 22 and go 4.1 miles and turn into the parking lot. Sign out front reads "One Salem Square".

*Please note that items sold in this catalog do not represent the personal views of RSL and it's employees.*

## CRÈME DE LA CRÈME TWENTY TWENTY-ONE

SATURDAY, AUGUST 21ST, 2021  
AT 10AM



Accepting quality consignments  
for future sales.

## CONDITION GRADES

Mint (M) .....	98%+
Near Mint (NM).....	97-98%
Pristine.....	95-96%
Excellent (EX) .....	90-94%
Very Fine (VF) .....	85-89%
Very Good .....	80-84%

Prices realized may be downloaded  
from [liveauctioneers.com](http://liveauctioneers.com)  
immediately after the sale closes.

# RSL AUCTIONS: CONDITIONS OF SALE

1. RSL Auctions acts as an agent for the seller. The contract for the sale of the property is between the seller and the buyer. No statements made within this catalog or made by a representative of or employee of RSL Auctions shall be deemed to be a warranty, representation, or assumption of liability with respect to the property's age, condition, size, quality, variety, importance, provenance, or historical relevance. All property is sold "as is".

2. All sales are final.

3. Buyers are responsible for satisfying themselves concerning the condition of the property.

4. The auctioneer will be solely responsible for determining the bidding increments.

5. The auctioneer will be the final judge in deciding which bidder has won an item. In the event of a dispute, the auctioneer at his discretion, shall decide whether to reopen bidding or not.

6. LiveAuctioneer's Bids: in order to bid through LiveAuctioneers, you must first register on LiveAuctioneer's website. RSL Auctions reserves the right, in our sole discretion, to refuse your registration or participation in the auction or to revoke your permission to participate before, during or after the sale.

6A: Bidspirit Bids - in order to bid through Bidspirit.com you must first register on the Bidspirit.com website. RSL Auctions reserves the right, in our sole discretion, to refuse your registration or participation in the auction or to revoke your permission to participate before, during or after the sale.

7. Absentee Bids: If you are unable to attend the actual sale, RSL Auctions are authorized to execute bids on your behalf. Complete an Absentee Bid Form and return to RSL Auctions BEFORE the absentee bid deadline. We cannot accept "Buy" bids. In the event that two identical bids are received, the first bid form received by RSL Auctions will have preference.

8. Phone Bids: Phone bids will also be accepted. To qualify for a phone line the same procedure of authorization required for an absentee bid is required. A backup bid in the event a party cannot be reached by phone is not required, but strongly recommended. There are a limited number of phone lines available. In the event that there are more requests than lines available, preference will go to the highest bidding parties. In the event, whether human or technical, that a phone call is not made, disconnected or the bidder cannot be reached at the number left, the backup bid will be executed. RSL Auctions cannot guarantee that phone bids will be executed.

9. Submit all questions regarding upcoming auction items at least 48 hours prior to the date of auction. We will make every effort to answer all submitted questions in a timely manner. However, we cannot guarantee that questions submitted within 48 hours of the auction date will be answered prior to the auction.

10. The buyer is required to pay New Jersey sales tax 7% unless exemption is allowed under the laws regulating such tax. Dealers must present a valid tax ID certificate in order to qualify for exemption.

11. Payment may be made by cash, personal check or credit card. A 23.5% buyer's premium will be added to all successful bids. A 3.5% discount will be applied for payment made by cash or personal check making the buyer's premium 20% if paid within 15 days. **Discount only applied to payment made within this time frame.** An additional 5% will be added to bids made through liveauctioneers.com. An additional 4% will be added to all bids made through Bidspirit.com. RSL Auctions reserve the right to hold all merchandise paid by check until payment has been cleared by the bank. This may take up to one month.

12. All accounts are to be settled within 15 days of the end of the sale.

13. There will be a \$50 charge added to all wire transfers.

14. In the event property is not paid for in full, RSL Auctions may pursue one or more of the following rights or remedies. A) charge interest at 2% per month of the unpaid balance. B) hold the defaulting buyer liable for the total amount due and commence legal proceedings for its recovery together with interest, legal fees and costs to the fullest extent permitted under applicable law. C) cancel the sale D) resell the property E) pay the seller the amount up to the net proceeds payable in respect to the amount bid by the default buyer minus one bid. F) or to take such other action as we deem necessary or appropriate.

15. Shipping may be arranged through RSL Auctions. A shipping fee of \$20 per lot, \$80 per 5 lots or \$150 per 10 lots is charged plus the incurred postage and insurance. International and large items will incur additional costs. Shipped items may take up to 45 days to be delivered. Due to Coronavirus, we strongly recommended that all International Packages be shipped via DHL Worldwide Express. We will gladly obtain a shipping quote for customers.

However, if you prefer to ship via the US Postal Service or any other carrier, we will make the arrangements. RSL Auction Company will not guarantee timely delivery or be financially responsible for those shipments.

Additional Shipping and Handling charges for all packages are listed above.

16. RSL Auctions has the capability to ship to international bidders. **By law, RSL Auctions cannot, and will not, declare lesser values for any international purchases and all shipments will include the invoice with purchase totals including the buyer's premium and shipping cost. All international bidders are responsible for knowing their country's laws on importing items and for paying all customs and duties on the items.**

17. RSL Auctions are not responsible for any typographical errors or omissions in this catalog or price key. Photographs in this catalog are of the actual objects being sold but are not shown to scale.

18. RSL Auctions reserve the right to refuse admission, participation in or request the departure of any person/persons.

19. RSL Auctions reserves the right to withdraw any property before, during and after the sale and shall have no liability whatsoever for such withdrawal.

20. In no event will our liability to a purchaser exceed the purchase price actually paid. RSL Auctions will not be responsible for any errors or failures to execute bids placed online or for any errors or omissions in connection therewith including, without limitation, errors or failures caused by (i) a loss of connection to the internet or the LiveAuctioneers Online Platform software by either RSL Auctions or the client; (ii) a breakdown or problem with RSL Auctions or LiveAuctioneers' Online Platform software; or (iii) a breakdown or problem with a client's internet connection, mobile network or computer.

21. RSL Auction's content on LiveAuctioneers' Online Platform ("Web Site" or "Platform") is published and maintained by LiveAuctioneers. If you are a registered user of LiveAuctioneers, the LiveAuctioneers' Privacy Policy governs your agreement with LiveAuctioneers with respect to LiveAuctioneers' collection, use, storage, and disclosure of your personal information. RSL Auctions does not control and is not responsible for the information and privacy practices of LiveAuctioneers on the LiveAuctioneers' Web site, which is operated entirely by LiveAuctioneers. You agree that RSL Auctions and its affiliates will not be responsible for, and that you release RSL Auctions and its affiliates from, any and all claims, liabilities, damages, losses and expenses related to unauthorized access to or use of, or any security breach relating to or affecting, LiveAuctioneers collection, use, storage, and disclosure of your personal information.

22. If any part of these Conditions of Sale are found by any court to be invalid, illegal or unenforceable, that part shall be discounted and the rest of the conditions shall continue to be valid to the fullest extent permitted by law.

23. By bidding at auction, whether present in person or by agent, by written bid, telephone or other means, the buyer indicates acceptance of these Conditions of Sale.

24. The rights and obligations with respect to the Conditions of Sale shall be governed by the laws of the state of New Jersey.

25. All rights reserved. Entire contents Copyright 2021. RSL Auctions Copyright includes, but not limited to, print, media, microfilm and electronic media, such as CD-ROM's and online computer services.



# SPELTER BANKS

Spelter banks were made in Germany from 1920 to 1935. Spelter is extremely easy to mold and consequently, the level of detail in these wonderful little banks is extraordinary. With their vivid colors and finely cast details these banks are intended to look like beautiful creations from Vienna bronze foundries of the period. Their delicate nature, however, also made these banks vulnerable to damage and destruction. Therefore, few of these banks have survived. This collection of German spelter banks is particularly noteworthy for its outstanding condition.



**Lot 1**  
**Rabbit Head**

German - 1925 - 3" Tall  
Excellent Plus Condition  
Estimate: \$500 - \$700



**Lot 2**  
**Golden Pheasant on Tree Stump**

German - 1925 - 4.25" Tall  
PGSB #158  
Pristine Condition  
Estimate: \$1200 - \$1500



**Lot 3**  
**Beehive**

German - 1920 - 2.625" Tall  
PGSB #505 - Moore Collection  
Very Fine (One minor chip)  
Estimate: \$600 - \$800



**Lot 4**  
**Parrot**

German - 1925 - 4" Tall  
PGSB # 132-C  
Pristine & Bright  
Estimate: \$400 - \$600



**Lot 5**  
**The Wise Owl**

German - 1930 - 4" Tall  
PGSB #113-C  
Pristine & Bright  
Estimate: \$350 - \$450



**Lot 6**  
**Seated Cat with Bow**

German - 1930 - 3.875" Tall  
Pristine Condition  
Estimate: \$500 - \$700



**Lot 7**  
**Sailor Bulldog with Pipe**

German - 1925 - 4.25" Tall  
Pristine Condition  
Estimate: \$900 - \$1200



**Lot 8**  
**Bulldog Bust with Pipe**

German - 1930 - 3.125" Tall  
Near Mint  
Estimate: \$400 - \$500



**Lot 9**  
**French Bulldog Seated**

German - 1925 - 4" Tall  
Pristine & Bright  
Estimate: \$1200 - \$1500



**Lot 10**  
**Scottie Seated**

German - 1930. 4" Tall  
PGSB #223-B  
Near Mint Condition  
Estimate: \$800 - \$1000



**Lot 11**  
**Seated Collie**

German - 1925 - 4.375" Tall  
Excellent Condition  
Estimate: \$800 - \$1000



**Lot 12**  
**Seated Doberman Pinscher**

German - 1925 - 3.75 Tall  
PGSB #238  
Excellent Condition  
Estimate: \$900 - \$1200





**Lot 13**  
**Mule with Pack and Child**

German - 1930 - 4.5" Tall  
PGSB #421  
Pristine Condition  
Estimate: \$700 - \$900

We have never seen another example of this bank.



**Lot 14**  
**Donkey with Hinged Neck - Large**

German - 1930 - 4.75" Tall  
PGSB #410  
Pristine Condition  
Estimate: \$300 - \$400

Scarce souvenir from "Clovelly" in the county Devon.



**Lot 15**  
**Chimney Sweep by Barrel**

German - 1920 - 4.25" Tall  
PGSB #647  
Excellent Plus Condition  
Estimate: \$1750 - \$2250

This is a rare and very desirable figural German spelter bank. Perhaps a handful of examples exist.



**Lot 16**  
**Tantalizing Dog in Doghouse**

Vienna Bronze  
Vienna, Austria - 1905 - 2.625" Tall  
Pristine Condition  
Estimate: \$1500 - \$2000

This is a fantastically detailed Art Nouveau bronze bank that was made in the city of Vienna, famous for such sculpture. Similar, but much more desirable than its spelter counterpart (PGSB #333).



**Lot 17**  
**Chimney Sweep on Rooftop**

German - 1925 - 3.375" Tall  
PGSB #648  
Pristine Plus Condition  
Estimate: \$1500 - \$1800

A very scarce and delicate German spelter bank with real bristles used in his broom.



**Lot 18**  
**Growling Bear**

German - 1925 - 3.875" Tall  
PGSB #97-D  
Andy & Susan Moore Collection  
Pristine Condition  
Estimate: \$900 - \$1200



**Lot 19**  
**Wild Boar Seated**

German - 1925 - 4.125" Tall  
PGSB# 14  
Pristine Condition  
Estimate: \$1200 - \$1500



**Lot 20**  
**Boy with Soccer Ball**

German - 1925 - 4.25" Tall  
PGSB # 537-D  
Pristine Plus & Bright  
Estimate: \$1000 - \$1500



**Lot 21**  
**Chauffeur**

German - 1920 - 3" Tall  
Excellent Plus Condition  
Estimate: \$1750 - \$2250



**Lot 22**  
**Boy with Empty Pockets**

German - 1925 - 3.875" Tall  
PGSB #570-A  
Near Pristine Condition  
Estimate: \$1000 - \$1500



**Lot 23**  
**Girl Reading a Book**

German - 1920 - 4.5" Tall  
PGSB # 560  
Excellent Plus Condition  
Estimate: \$800 - \$1000



**Lot 24**  
**Young Man with Pipe**

Standing on a Potato  
German - 1925 - 6" Tall  
PGSB #618-B  
Excellent Plus and Bright  
Estimate: \$1750 - \$2250



**Lot 25**  
**Boy Eating a Sausage Sandwich**

German - 1920 - 4.75" Tall  
PGSB #561  
Excellent Plus Condition  
Estimate: \$800 - \$1000

A very well painted spelter bank. It is remarkably well preserved considering the fragility of this toy bank.





**Lot 26**  
**Canadian Beaver by Ball**

German - 1930 - 3.25" Tall

PGSB #8

Excellent Plus Condition

Estimate: \$1200 - \$1500

The bank is composed of tin and spelter parts. The beaver stands upon a maple leaf marked as a souvenir from "Canada". At this time, we believe this to be the only known specimen of this charming toy bank.



**Lot 27**  
**The Frisky Fox**

German - 1925 - 4" Long

PGSB #40

Pristine Condition

Estimate: \$1500 - \$2000

This bushy-tailed red fox assumes what looks like a very playful pose. To the opposite, he's being circumspect and cautious to make certain he's not captured by the fox hunters.



**Lot 28**  
**American White Pelican**

German - 1925 - 4" Tall

PGSB #141

Pristine Plus & Bright

Estimate: \$2500 - \$3500



**Lot 29**  
**The Seated Frog**

German - 1925 - 3.875" Tall

Very Fine Overall

(Tiny in-paint to his yellow neck)

Estimate: \$400 - \$600



**Lot 30**  
**Mickey Mouse on Cheese Wheel**

German - 1930 - 5.125" Tall  
Near Mint & Bright  
Estimate: \$2000 - \$3000

**Lot 31**  
**Cat Playing a Piano**

German - 1925 - 2.125" Tall  
Excellent Plus Condition  
Estimate: \$800 - \$1000

This adorable tiny bank has the dubious honor of being the smallest lead bank ever produced. Furthermore, perhaps more than any other, it resembles the gorgeous animalist bronzes of the Viennese workshops.



**Lot 32**  
**Dapper Cat with Staff**

German - 1920 - 7.5" Tall  
PGSB #221-B  
Pristine Condition  
Estimate: \$4000 - \$6000

This is one of the finest and most desirable spelter banks ever produced. It is a superior and bright example retaining all of its whiskers and is the book example.







**Lot 33**  
**Village Cottage Bank**

Made by Kibri  
Germany - Circa 1925  
3 5/8" W x 3" D x 4" T  
From Donal P. Markey  
Near Mint with the Key  
Estimate: \$600 - \$800



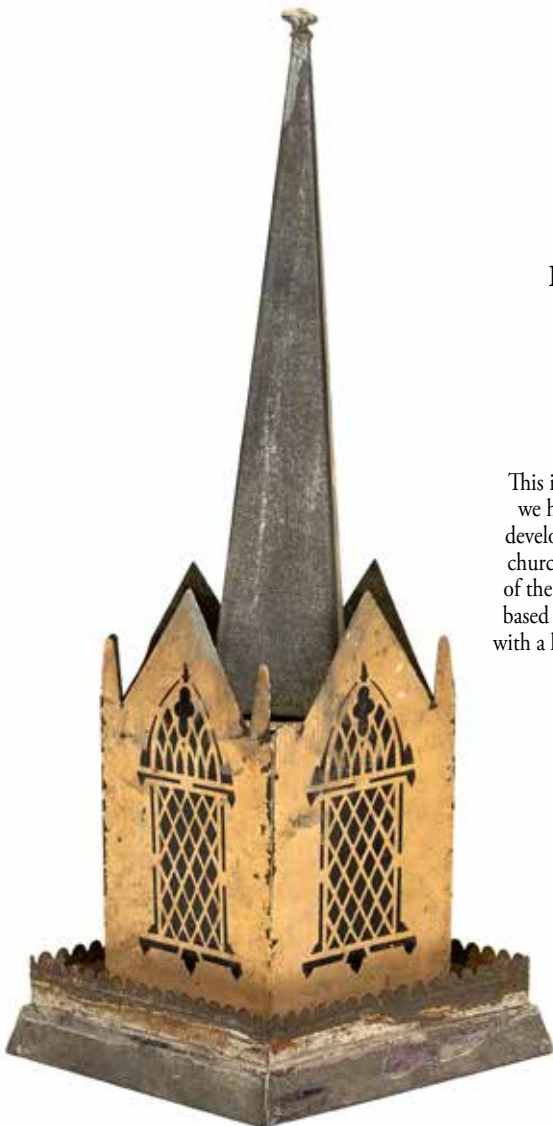
**Lot 34**  
**Ornate Chalet Bank**

Made by Gebruder Bing  
Nuremberg - Circa 1910's  
4 1/4" W x 3" D x 3 3/4" T  
From Donal P. Markey  
Near Mint with Rich Color  
Estimate: \$1200 - \$1500



**Lot 35**  
**Malwine Train Station Bank**

Made by Gebruder Bing  
Nuremberg - Circa 1910's  
4 1/4" W x 2 5/8" D x 3 1/4" T  
From Donal P. Markey  
Mint Condition & Bright  
Estimate: \$750 - \$950



**Lot 36**  
**Rare Monument Tin Bank**

By Merriam Mfg. Company  
Durham, Ct. - Early 1880's  
3 3/4" W x 3 3/4" D x 10 1/4" T  
From Garthoeffner Collection  
Pristine Plus Condition  
Estimate: \$2000 - \$2500

This is the nicest specimen of a Monument Bank we have ever seen. It is far more architecturally developed than others. Essentially, it uses a gothic church form with spires to fashion the lower part of the monument. This is surmounted by a square based obelisk that comes to a point and is finished with a lead finial. The square base has very appealing scalloped fencing around it.



**Lot 37**  
**Rare U-Boat Naval Submarine**

Germany - Circa 1925 - 5.25" Long  
 Very Fine Condition - PGSB #510  
 Estimate: \$1200 - \$1500

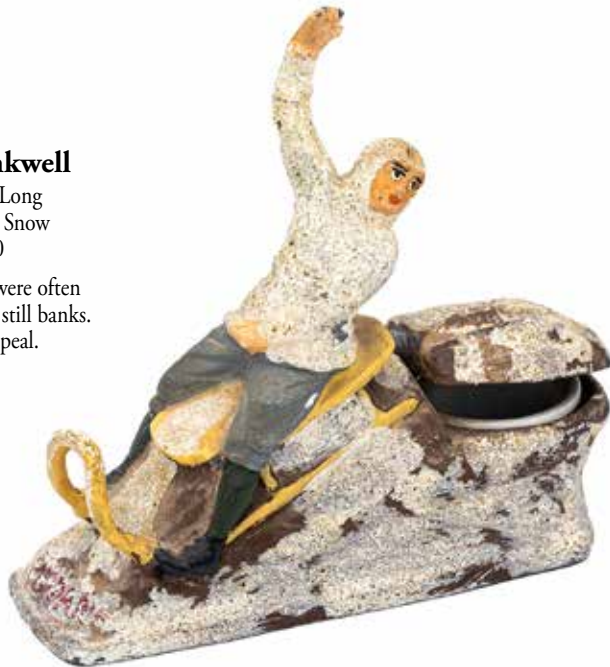
Transportation themed spelter still banks are surprisingly scarce. Among this subset of toy banks, submarines are perhaps the most esoteric of all. In fact, in more than fifty years of collecting, we have only seen this U-Boat one other time.



**Lot 38**  
**Downhill Sledder Inkwell**

Germany - 1920 - 4.125" Long  
 Excellent Plus with Sparkly Snow  
 Estimate: \$300 - \$400

Small spelter desk ornaments were often made by the same makers as the still banks. This piece has great eye appeal.



**Lot 39**  
**Early Racing Car**

German - 1915 - 5" Long  
 Excellent Plus (Figure Excellent)  
 Estimate: \$3000 - \$4000

This is a scarce and extremely desirable German spelter bank depicting an early racing car with its driver wearing goggles. A great addition to any collection.







**Lot 40**  
**House form Sudahkah Box**

Probably German - 1910 - 3.5" Long  
Pristine Plus Condition  
Estimate: \$350 - \$450

This is a silver plated handmade tin bank in outstanding condition.



**Lot 41**  
**Pelican with Opening Beak**

German - 1930 - 4" Tall  
Pristine Condition  
Estimate: \$400 - \$600

This is actually a semi-mechanical bank, as the beak must be opened to reveal the coin slot. It has a very Art Deco feel.



**Lot 42**  
**Rabbits by Cottage**

German - 1915 - 4.375" Long  
Pristine Condition  
Estimate: \$500 - \$700

This cute and charming bank is composed of silver plating over sheet brass.



**Lot 43**  
**"Old Sleepy Eye" Tobacco Bank**

German - 1915 - 3.125" Tall  
Excellent Condition  
Estimate: \$400 - \$600

This is a very scarce silvered lead bank that we have not seen before.



**Lot 44**  
**Monkey Seated on his Travel Crate**

Probably Austrian - 1910 - 4.25" Tall  
Pristine Plus Condition  
Estimate: \$700 - \$900

The details on this bank are extraordinary. It is made of brass with a steel bottom and has a keylock to retrieve your coins. Super rare and possibly unique.



**Lot 45**  
**Indian Bust on Pedestal Base**

"North American Bank - Pays 6% on Savings"  
American - 1935 - 5.5" Tall  
Donal Markey Collection  
Pristine Plus Condition  
Estimate: \$500 - \$700

Can you imagine receiving 6% interest for your savings?



**Lot 46**  
**Prancing Horse on Base**

Nickel Plating Over Bronze  
130th Anniversary (1837-1967)  
Souvenir from Marion, Ohio  
Virtually Mint Condition  
Estimate: \$500 - \$700



**Lot 47**  
**Nickeled "BEAUTY" Horse**

By Arcade Manufacturing  
Freeport, IL - Circa 1920's  
Pristine Plus Condition  
Estimate: \$400 - \$500



**Lot 48**  
**The Good Luck Horseshoe**

Rare Nickel Plated Example  
By Arcade Manufacturing  
Freeport, IL - Circa 1920's  
Pristine Plus Condition  
Estimate: \$600 - \$800



**Lot 49**  
**Nickeled Tiny Scottie Bank**

American - Late 1920's - 3 1/8"  
Bought from Donal Markey  
Pristine Bright Condition  
Estimate: \$750 - \$950



**Lot 50**  
**Small Nickeled Reindeer Bank**

By the A. C. Williams Company  
Ravenna, Ohio - Circa 1920's  
Excellent Plus Condition  
Estimate: \$400 - \$500



**Lot 51**  
**Rare and Important**  
**Metamorphic Bank**  
**"I Love a Copper" &**  
**"Every Copper Helps"**

By Sydenham & McCoustra  
England - 1910's - 6" Tall  
Near Mint - Great Patina  
Estimate: \$1200 - \$1500

This unusual shape-shifting and sex-changing bank is one of the most brilliantly designed toys ever created. Maybe M. C. Escher and Caitlyn Jenner were the parents of this creative hybrid. This may be the only nickel plated specimen of this fascinating treasure.







**Lot 52**  
**Hungarian Money Bag Bank**

European - Post World War 1  
 Marked ELET Biztosítás on Bag  
 Translation is "Life Insurance"  
 Excellent Plus Condition  
 Estimate: \$500 - \$700



**Lot 53**  
**200,000 Rubles Money Bag**

Probably Russian - Circa 1900  
 Trap is marked F. Sardainin  
 Douglas Jackman Collection  
 Excellent Plus Condition  
 Estimate: \$700 - \$900



**Lot 54**  
**The Best Kast Iron Clothing**

Rare Advertising Safe Bank  
 By the Regent Mfg. Company  
 Chicago - 1890's - 4" Tall  
 Pristine Plus Condition  
 Estimate: \$800 - \$1000



**Lot 55**  
**Unusual Ball Shaped Safe for the**

Dime Savings at 221 N. 12 Street  
 American - 1890's - 3" Diameter  
 Very Fine Plus Condition  
 Estimate: \$400 - \$500



**Lot 56**  
**Fidelity Safe Bank**

By Kyser & Rex Company  
 Frankford, Pa. - 1880 - 3" T  
 Donal Markey Collection  
 Near Mint - Great Gold  
 Estimate: \$225 - \$275



**Lot 57**  
**Stenciled Door Safe**

Blue, Red and Black  
 By the J. & E. Stevens Company  
 Cromwell, Ct. - 1890's - 4 1/4" T  
 Donal Markey Collection  
 Near Mint & Very Bright  
 Estimate: \$500 - \$700



**Lot 58**  
**American Globe Safe**

on Ball & Claw Feet  
 Rare Key-Locking Trap  
 American - Late 1890's  
 Pristine with Great Patina  
 Estimate: \$500 - \$700



**Lot 59**  
**Stenciled Door Safe**

Green, Black and White  
 By the J. & E. Stevens Company  
 Cromwell, Ct. - 1890's - 4 3/4" T  
 Donal Markey Collection  
 Pristine Paint & Great Patina  
 Estimate: \$400 - \$500





**Lot 60**  
**Birds Space Heater Bank**

Rare Nickel Plated Example  
By Chamberlain & Hill Ltd.  
England - 1890's - 6 1/2" T  
Near Mint and Very Shiny  
Estimate: \$550 - \$750



**Lot 61**  
**Beehive Space Heater Bank**

Unusual Polychrome Specimen  
England - 1890's - 6 1/4" Tall  
Acquired from Donal P. Markey  
Pristine Plus and Very Vivid  
Estimate: \$1200 - \$1500



**Lot 62**  
**Cupid Space Heater Bank**

Rare Nickel Plated Example  
By Chamberlain & Hill Ltd.  
England - 1890's - 6 1/2" T  
Near Mint and Very Bright  
Estimate: \$800 - \$1000



**Lot 63**  
**Impressive Beehive Bank**

Made by W. M. Gobeille  
Cleveland, Ohio - Late 1890's  
From the Andy Moore Collection  
Illustrated page 94 in the Mechanical Bank Book  
Pristine Condition with Key  
Estimate: \$1500 - \$2000

We think that this copper flashed beehive bank is one of the most beautiful still banks we have ever laid our eyes upon. There is more information on the bottom of this bank than any other and the key-lock trap is fascinating.







**Lot 64**  
**Give Billy A Penny**

a.k.a. Billy Bounce Bank  
By Hubley Mfg. Company  
Lancaster, Pa. - Circa 1910's  
Near Mint & Very Bright  
Estimate: \$500 - \$700



**Lot 65**  
**Rare Boy Scout Bank**

"Made in Canada"  
Frank Kidd Collection  
Pristine Plus Condition  
Estimate: \$400 - \$600

This Canadian version of the Boy Scout still bank is the rarest and most difficult specimen to find.



**Lot 66**  
**Deluxe Foxy Grandpa Bank**

Early Version with turnpin  
Wing Manufacturing Company  
Chicago, IL - Circa 1905  
Near Mint & Very Bright  
Estimate: \$500 - \$700



**Lot 67**  
**Indian with Tomahawk**

By Hubley Mfg. Company  
Lancaster, Pa. - Circa 1910's  
Near Mint - Great Highlights  
Estimate: \$500 - \$700

We have not seen another specimen of this bank finished with an "army green" colored Indian.



**Lot 68**  
**WW1 Doughboy Soldier**

Grey Iron Casting Company  
Mount Joy, Pa. - Late 1910's  
Mint Condition - Rich Color  
Estimate: \$800 - \$1000

This is clearly a stunning example of the scarce Doughboy. It may be the finest in existence.



**Lot 69**  
**Minuteman Soldier**

By Hubley Mfg. Company  
Lancaster, Pa. - Late 1900's  
Near Mint - Great Gold Details  
Estimate: \$500 - \$700

This enlisted man wears the costume closely associated with Teddy Roosevelt's Rough Riders.



**Lot 70**  
**Circus Clown Bank**  
 Nickel Plated Example  
 By A. C. Williams Company  
 Ravenna, Ohio - Early 1910's  
 Pristine Plus Condition  
 Estimate: \$400 - \$500



**Lot 71**  
**Baseball Mascot Bank**  
 Burnished Copper Finish  
 By the Hubley Mfg. Company  
 Lancaster, Pa. - Early 1910's  
 From Donal Markey Collection  
 Absolutely Mint Condition  
 Estimate: \$3500 - \$4500



**Lot 72**  
**Performing Circus Horse**  
 Rare Nickel Plated Specimen  
 By A. C. Williams Company  
 Ravenna, Ohio - Early 1920's  
 Pristine Plus Condition  
 Estimate: \$500 - \$700

Here is another extraordinary gem that Frank was able to pry loose from the meticulous Mr. Markey.



**Lot 73**  
**Large Traffic Stop Sign**  
 By the Dent Hardware Company  
 Fullerton, Pa. - 1920 - 5 3/4" Tall  
 Mrs. Hegarty to Donal Markey  
 Flawless Mint Condition  
 Estimate: \$1500 - \$1800



**Lot 74**  
**The Goliwog Bank**  
 Rare Burnished Brass Finish  
 John Harper & Company Ltd.  
 Great Britain - Late 1910's  
 Pristine with Good Patina  
 Estimate: \$600 - \$800



**Lot 75**  
**Save & Smile Hanging Santa**  
 With Scarce Graniteware Finish  
 By John Harper & Company Ltd.  
 England - Circa Late 1890's  
 Pristine Plus Condition  
 Estimate: \$800 - \$1000





### **Lot 76 Mulligan the Cop Bank**

Advertisement for Truex & Dennig  
By the A. C. Williams Company  
Ravenna, Ohio - Circa 1910's  
Excellent Plus Condition  
Estimate: \$950 - \$1250



### **Lot 77 Give Me A Penny Farmer**

Deluxe Paint with Brown Face  
Made by Hubley Mfg. Company  
Lancaster, Pa. - Circa Early 1910's  
Excellent Plus Condition  
Estimate: \$300 - \$400



### **Lot 78 Cast Iron Golliwog Bank**

John Harper Ltd. Company  
England - Circa Early 1910's  
Pristine & Very Bright  
Estimate: \$500 - \$600



### **Lot 79 Sharecropper Bank**

A. C. Williams Company  
Ravenna, Ohio - 1920's  
Pristine Condition  
Estimate: \$150 - \$250



### **Lot 80 Mulligan the Cop Bank**

Advertisement for Hamburgers Boys Dept.  
By the A. C. Williams Company  
Ravenna, Ohio - Circa 1910's  
Pristine Plus Condition  
Estimate: \$700 - \$900



**Lot 81**  
**Give Me A Penny**

Hubley Mfg. Company  
Lancaster, Pa. - 1920  
Pristine Condition  
Estimate: \$250 - \$350

Very unusual variant with strongly defined raised letters. Has Hubley's screw closure.



**Lot 82**  
**Mulligan the Cop**

Hubley Mfg. Company  
Lancaster, Pa. 1914  
Donal Markey Collection  
Near Mint with Rich Color  
Estimate: \$950 - \$1250

This gorgeous bank is finished in an unusual light French Blue. We have not seen another this shade of blue. Truly outstanding quality.



**Lot 83**  
**Give Me A Penny**

Made by Wing Mfg.  
Chicago - Late 1890's  
Pristine Plus Condition  
Estimate: \$250 - \$350

Wing Mfg. used a turn-pin as a closure device for their toy banks. They are rarely in great condition.



**Lot 84**  
**Give Me A Penny**

Made By Wing Mfg.  
Chicago - Early 1900's  
Donal Markey Collection  
Pristine Plus Condition  
Estimate: \$800 - \$1000

This wonderful black themed bank has the man dressed as a prisoner from a chain gang. Totally unique and very cool.



**Lot 85**  
**Mulligan the Cop**

A. C. Williams Company  
Ravenna, Ohio - 1910's  
Excellent Plus Condition  
Estimate: \$400 - \$500

This figure is seldom found with a gold colored costume.



**Lot 86**  
**Give Me A Penny**

Made by Wing Mfg.  
Chicago - Early 1900's  
Donal Markey Collection  
Excellent Plus Condition  
Estimate: \$800 - \$1000

This bank portrays a well-dressed country farmer. Donal Markey found this highly unusual pair of figures (lot 84) decades ago.





**Lot 87**  
**Santa with Toys Pack**

Rocking Aluminum Bank  
Unknown American Maker  
Probably made Circa 1950  
Virtually Mint Condition  
Estimate: \$350 - \$450



**Lot 88**  
**Polychrome Middy Bank**

Possibly by Ives, Blakeslee  
Bridgeport, Ct. - Late 1880's  
Donal P. Markey Collection  
Pristine Plus Condition  
Estimate: \$400 - \$600

This is the most noteworthy specimen of the Middy Bank that we have ever come across.



**Lot 89**  
**Mammy with Basket**

Rare White Metal Bank  
Unknown American Maker  
Probably made Circa 1940's  
Positively Mint Condition  
Estimate: \$400 - \$500



**Lot 90**  
**The French Gendarme**

Rare Aluminum Bank  
Probably Circa Late 1930's  
Excellent Plus Condition  
Estimate: \$450 - \$650

The minimal abstract silhouette formed by the policeman's legs jutting out from the bottom of his large sweeping cape makes for a genuinely sculptural toy.

**Lot 91**  
**The Downtrodden Hobo**

Very Rare Aluminum Bank  
Unknown European Maker  
From Depression Era 1930's  
Pristine Plus - Great Patina  
Estimate: \$1000 - \$1500

This poignant representation of an "out of work" man fallen on hard times truly pulls at your heart strings. His sign board makes light of his reduced circumstances by pointing out his willingness to accept all monetary contributions. This bank may possibly be unique because we have never seen another.





### Lot 92

#### The Cannon Bank

By Hubley Mfg. Company  
Lancaster, Pa. - Early 1910's  
Ex - Donal Markey Collection  
Mint & Luminously Bright  
Estimate: \$3500 - \$4500

Rarely in a collector's lifetime does he or she get the chance to acquire a toy bank as beautiful as this one. And yet, Frank Kidd got that shot many times over. As a good friend and preferential client of Donal Markey's, he was often first in line to be offered deaccessioned toys and banks from the maestro's collection. This is one of the best.



### Lot 93

#### Save & Smile Hanging Santa

By John Harper & Company Ltd.  
England - Circa Late 1890's  
Pristine Condition  
Estimate: \$800 - \$1000

### Lot 94

#### City Plug Fire Hydrant

Old Volunteer F. D. Bank  
Unknown American Maker  
Produced in the Mid 1880's  
Ex - Frank Kidd Collection  
Exquisite Pristine Condition  
Estimate: \$5500 - \$7500



### Lot 95

#### Large Oregon Gunboat Bank

Attributed to Kenton Hardware  
Kenton, Ohio - Circa Late 1890's  
Excellent with Original Masts  
Estimate: \$2250 - \$2750

At an impressive eleven inches, this battleship toy bank is one of the longest still banks ever made. The USS Oregon was the third and final "Indiana Class" battleship built for the United States Navy in the 1890's. This naval trio was characterized by their low freeboard and two revolving turrets each outfitted with a pair of 13-inch guns. This is a very fine example of the bank and includes the original masts.





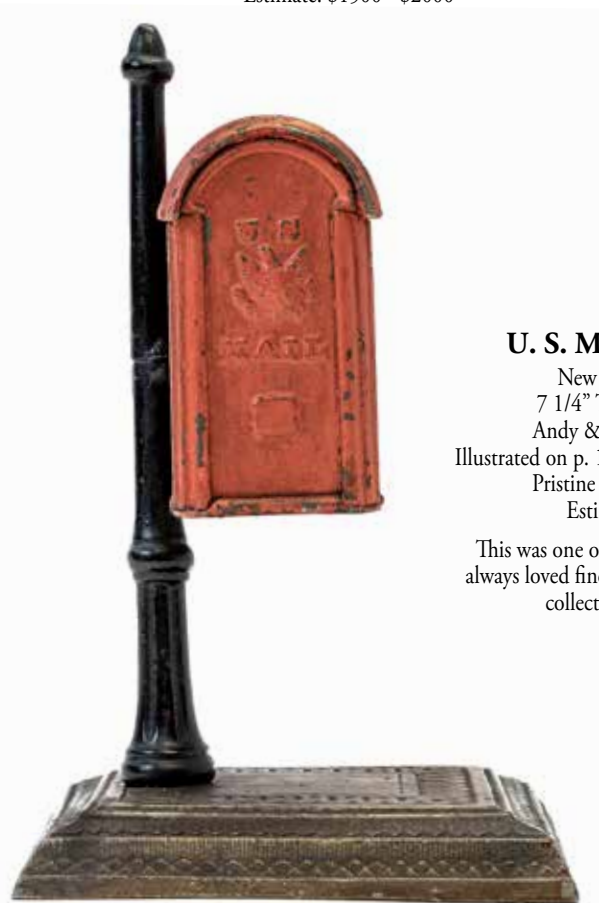
**Lot 96**  
**U. S. Mailbox on Victorian Base**

Rare Striated Copper Flashed Finish  
Made by the Hubley Mfg. Company  
Lancaster, Pa. - Ca. 1906 - 7 3/4" Tall  
Pristine Plus Condition & Great Patina  
Estimate: \$1500 - \$2000



**Lot 97**  
**Reliable Parlor Stove Bank**

Fitted with a Winding Clock  
Made by Schneider & Trenkamp  
Chicago, Illinois - Circa 1895  
Excellent Plus Condition  
Estimate: \$1200 - \$1500



**Lot 98**  
**U. S. Mailbox on Platform**

New England - Late 1890's  
7 1/4" T x 4 5/8" W x 4 5/8" D  
Andy & Susan Moore Collection  
Illustrated on p. 102 in the Mechanical Bank Book.  
Pristine Condition - Great Patina  
Estimate: \$1750 - \$2250

This was one of Andy's true "pride & joys". He always loved finding a unique piece that no other collector had in his collection.





**Lot 99**  
**Rare Nickel Plated Satchel Bank**

Made of Heavy Steel & Cast Iron  
American - 1910's - 5 3/4" Long  
Pristine Plus - Great Patina  
Estimate: \$600 - \$800

Written Underneath: Germania Half Dollar Savings Bank -  
1501 Market Street - Wheeling, W. Virginia



**Lot 100**  
**Scarce Urn Savings Bank**

Silver Plated White Metal  
American - 1880's - 4 1/2" Tall  
Excellent Original Condition  
Estimate: \$950 - \$1250

This bizarre bank resembles an early hurricane lamp without its glass chimney. A cleverly punned adage reads "A Penny Saved • A Penny Urned".

**Lot 101**  
**The "Pingree Potato" Bank**

Scarce Ebony Black Example  
Designed by Mary A. Martin  
American - 1890's - 5 1/2" Long  
Near Mint - Beautiful Soft Glow  
Estimate: \$2000 - \$2500

Hazen Pingree was a four time Republican mayor of Detroit (1889-1897). During the economic Panic of 1893, Pingree launched his innovative "Potato Patch Plan", opening up empty city lots for urban farming to all citizens.



**Lot 102**  
**Iconic Alphabet Cube Bank**

American - 1890's - 3 7/8"  
Bought from Donal Markey  
Pristine Plus Condition  
Estimate: \$2500 - \$3500



**Lot 103**  
**Apple on Three Leaves**

By the Kyser & Rex Company  
Frankford, Pa. - 1880's - 5 1/4"  
Pristine Plus with Vivid Color  
Estimate: \$1500 - \$1800

This is one of the most brilliant uses of trompe l'oeil realism ever deployed to create a toy.





**Lot 104**  
**Elegant Dressed Cat Seen Walking**  
**His Dinner in a Caged Perambulator**

Probably by Sigmund Gunthermann  
 Germany - Circa 1900's - 8" Long  
 Very Good Plus Condition  
 Estimate: \$2000 - \$2500

This is an extremely rare & comical novelty toy. Leave it to the Germans to portray a well dressed male cat strutting down the avenues while showing off tonight's dinner. The toy retains good strong paint and works well.



**Lot 105**  
**Clown Teaching Goose to Sing**

Made by Sigmund Gunthermann  
 Germany - 1910 - 7" Wide x 7 1/2" Tall  
 Very Good Condition & Works Well  
 Estimate: \$2000 - \$2500

Another amusing painted tin novelty toy in which a clown attempts to teach the goose to quack out a song for the audience. Mechanism works great.



**Lot 106**  
**Le Sauteur Intrepide**

(The Fearless Jumper)  
 Made by Fernand Martin  
 France - 1900's - 10" Long  
 Excellent Plus Condition  
 Estimate: \$4500 - \$5500

This toy deploys a very clever mechanism to achieve the wonderful action of the athlete jumping over the hurdle. When the toy is given a vigorous winding, the runner can be seen circling the simulated mound of earth and grass. Once he reaches the hurdle, he sort of somersaults over it.



**Lot 107**  
**Hand-Painted Man on Skis**

Propellor Blade on his Back  
Probably made by Gunthermann  
Germany - 1910's - 8" T x 6" L  
Excellent and Works Very Well  
(General Overall Restoration)  
Estimate: \$1500 - \$2000

This is a scarce and intriguing German painted novelty toy. It portrays a cross-country skier holding a single long pole in his hands. When wound up, the propellor spins forcibly, thus causing him to move forward as if he is pushing himself across the snow.



**Lot 108**  
**An Actor Taking His Bow**

By Sigmund Gunthermann  
Germany - 1910's - 8" Tall  
Pristine Plus & Very Bright  
Estimate: \$800 - \$1000

**Lot 109**  
**Soldier and Red Cross Dog**

Attributed to Issamayer Company  
Germany - 1910 - 7" Long x 7" Tall  
Pristine All Original Condition  
Estimate: \$4000 - \$5000

This represents an extremely scarce hand-painted German novelty toy. Collectors see the dog by himself with some regularity, but the toy is exceedingly scarce when the dog is found accompanied by a soldier. In fact, there are fewer than ten known extant examples. This is a very elusive find worthy of a sophisticated collection.







**Lot 110**  
**Painted Mechanical Duck**

By Sigmund Gunthermann  
Germany - 1910 - 5 1/2" L  
Excellent Plus Condition  
Estimate: \$250 - \$350

German painted novelty windup toys rarely come as clean in quality as this one.



**Lot 111**  
**Scarce Mechanical Tricyclist**

Tin & Lead Components  
Made by Jouets de Paris  
France - 1910's - 5" x 8"  
Excellent Plus Condition  
Estimate: \$2000 - \$3000

This toy represents very early production for JEP (Jouets de Paris). Typically, it is found as a conventional two-wheeled bicycle. Only very rarely does it turn up as a tricycle. Works very well when wound up.



**Lot 112**  
**Unusual Rear Entry Tonneau**

Made by Sigmund Gunthermann  
Germany - Circa 1905 - 7 1/2" L  
Very Good Condition  
Estimate: \$1750 - \$2250

This early automotive vehicle is very rare when it's found in this red, white & gold finish. Spoked wheels and rubber tires also add greatly to the eye appeal of this toy.





**Lot 113**  
**Atlantic City Rollo Chair**

By Ferdinand Strauss Company  
New York City - 1920 - 6" Long  
Near Mint and Very Bright  
Estimate: \$800 - \$1000

The Ferdinand Strauss Toy Company was established in the early decades of the 20th century. From the beginning, Strauss instituted a policy to create a line of inexpensive mechanical toys. This "Rollo Chair" was one their first great successes.

**Lot 114**  
**"Le Petit Livreur"**

Version with Grand Hotel Trunk  
By the Fernand Martin Company  
France - 1910 - 7" Long x 7" Tall  
Excellent Condition & Works Well  
Estimate: \$2500 - \$3500

In this rare version of Martin's iconic delivery boy, a lithographed tin trunk is attached to the skiff with the travel destination "Grand Hotel - Paris" marked on the side. Presumably, this functioned as a candy container that was sold at the Grand Hotel during Christmas holidays. There are very few known examples of this toy.



**Lot 115**  
**Important Early Motorcycle**

By Sigmund Gunthermann  
Germany - 1914 - 7 1/2" Long  
Pristine Plus Condition  
Estimate: \$5000 - \$6000



The well-detailed driver is dressed in a brown uniform. The clockwork mechanism, which is housed inside the body of the motorcycle, engages a chain spring drive that activates a spark wheel. This is an exceptional quality example of an exceptionally rare motorcycle.



**Lot 116**  
**French Sailor in a Rowboat**

Unusual Articulated Maritime Toy  
 French - Circa 1900 - 12 1/2" Long  
 Pristine Condition  
 Estimate: \$1750 - \$2250

This charming maritime themed toy has everything going for it. The body of the rowboat is made of pressed cardboard. The sailor's hands & feet, along with the oars, are made of wood. His handsome face and blue cap are papier-mâché and the wheels are made of cast lead, typical of a French toy from this early period. The colors are still richly saturated and the condition is truly remarkable.



**Lot 117**  
**Hand-Painted Tin Boat**

Unknown German Manufacturer  
 Circa Mid 1890's - 12" L x 5" T  
 Excellent Condition  
 Estimate: \$1500 - \$1800

If we were to hazard a guess as to the maker of this unusual toy boat, we might reasonably guess either the Ernst Planck or Issamayer companies. This attribution would be based purely upon the style of the tent's curtains and the six-spoked tin wheels. This toy was discovered years ago in the attic of an affluent household in India. Two figures sit outside the tented area, in which sits an elegant fashionable lady. They hold poles in their hands because they are the oarsman who guide the gondola along. A nearly identical boat was sold as part of the Reynolds Collection at Forsythe's Auctions some 18 months ago.



**Lot 118**  
**Question Mark Bi-Wing Airplane**

First Flight from Paris to New York  
Made by Carl Rossignol Company  
French - Circa 1930 - 14 1/2" Long  
Excellent Condition - Repair at Tail  
Estimate: \$2000 - \$2500

Rossignol produced the "?" airplane to honor the first flight from Paris to New York in September 1930 by pilots Costes and Bellonte. The question mark (?) essentially asks whether the plane and its pilots will actually complete the entire transatlantic journey. This toy airplane is seen as very historically significant and desirable. One minor repair made to re-secure the left portion of the tail blade. Should be fixed to make invisible.

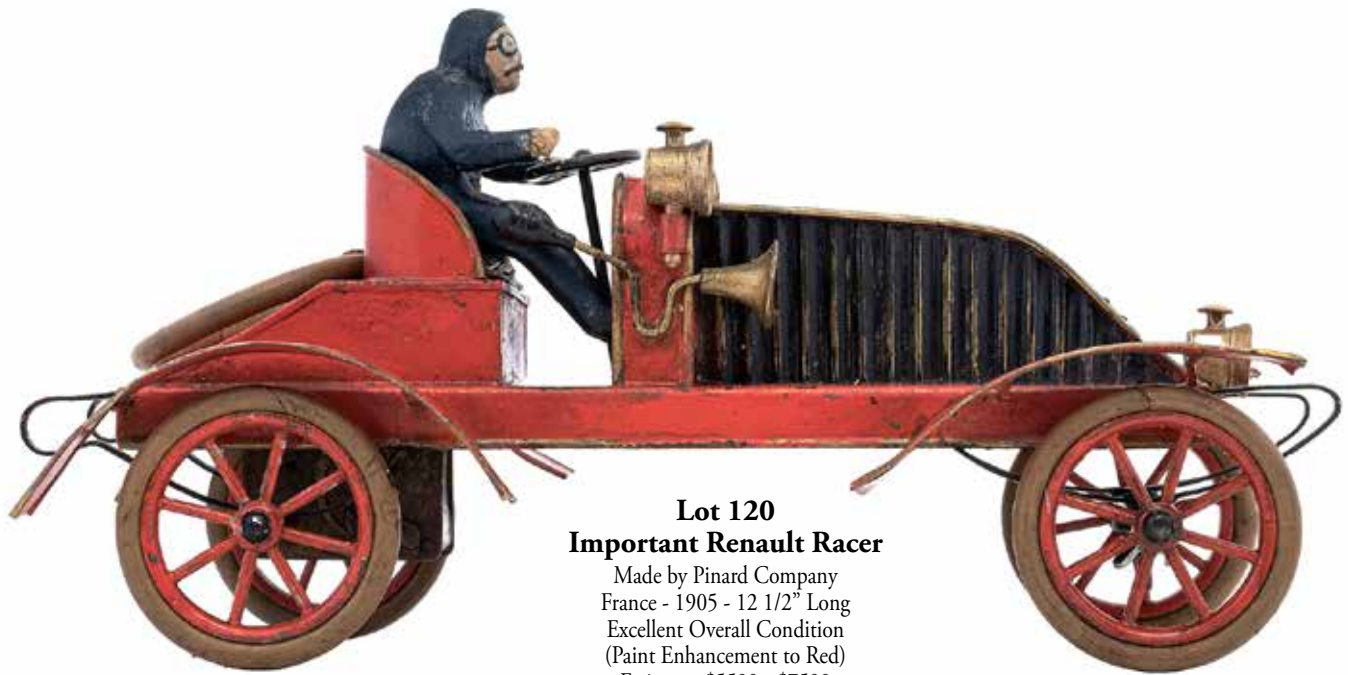


**Lot 119**  
**Atom 27 Race Car**

Scarce Female Driver  
Made by Yonezawa Toys  
Japan - 1955 - 16" Long  
Excellent Plus Condition  
Estimate: \$1500 - \$2000

This iconic friction drive race car is considered an absolute "must have" in the world of Japanese toy manufacturing. It is a very superior specimen of this delightful colorful toy and still works well.





**Lot 120**  
**Important Renault Racer**

Made by Pinard Company  
France - 1905 - 12 1/2" Long  
Excellent Overall Condition  
(Paint Enhancement to Red)  
Estimate: \$5500 - \$7500

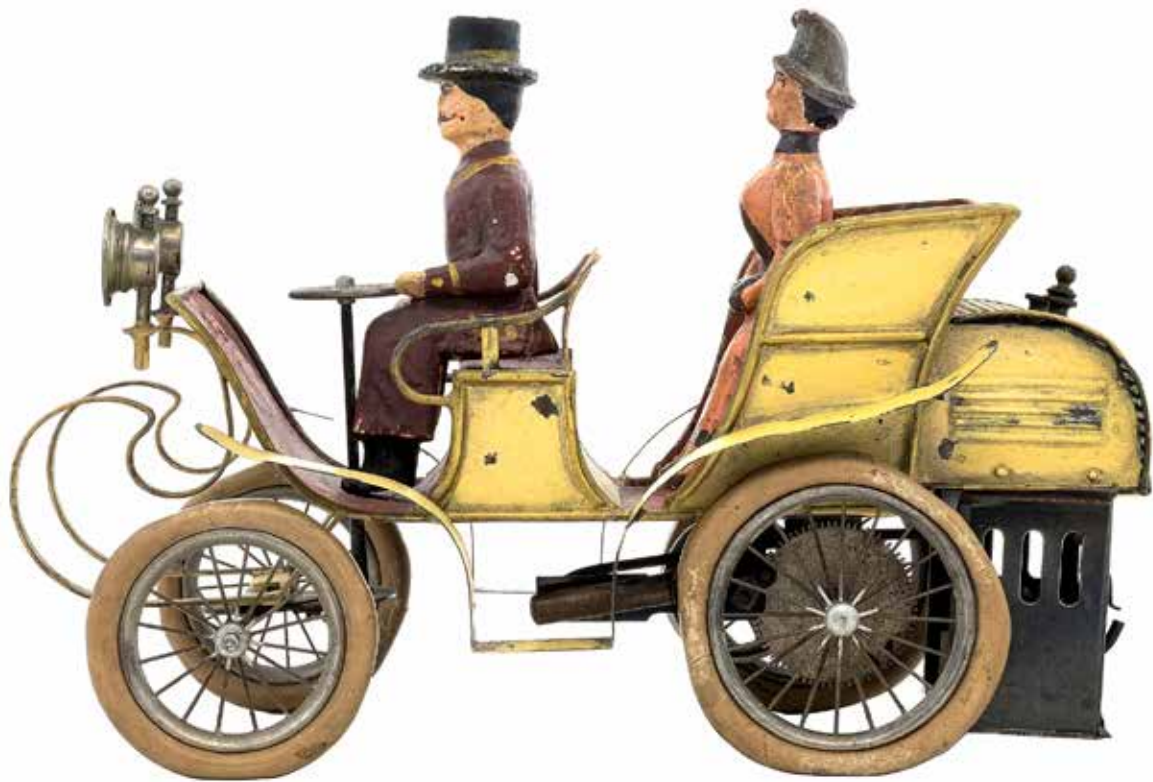
This Renault Racer is perhaps the rarest and most desirable automotive toy that Pinard ever made. There are only a handful of known examples. Finished in bright red with gilt trim, this amazing race car is outfitted with spoked wheels, a headlamp and side lanterns, a bugle horn and rare wire suspension. The goggled driver is also from the period, but needed some restoration. All in all, a very sleek and classy toy automobile.



**Lot 121**  
**Impressive Painted Limousine**

Made by Hispania Toy Company  
Barcelona - 1908 - 13" L x 7 1/2" T  
Largely Excellent Original Condition  
(Minor Paint Restoration to the  
Running Boards & Mudguards)  
Estimate: \$4500 - \$5500

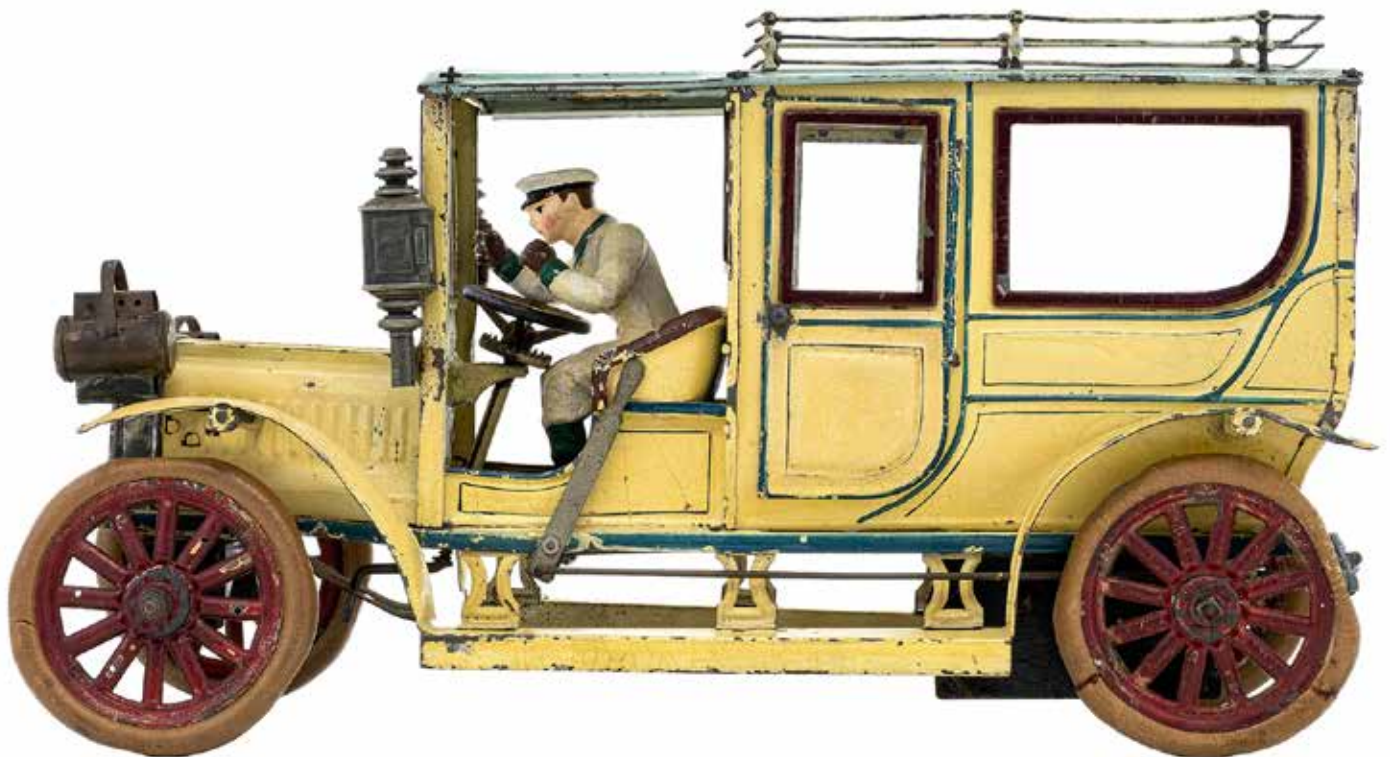
The Hispania Company was founded by Roca Farriols in 1880. For several decades, they produced a very small line of toys. However, by the early 1900's, Hispania offered a varying array of limousines, race cars, fire engines, carriages, trams, boats and trains. This has been confirmed by the recent discovery of a sketchbook chock-full of original designs & illustrations of toys made at Hispania. The book descended among the heirs of the company and was sold in 2019. The book clearly indicates a level of mastery and quality equal to the German toy makers, notably Bing and Marklin, of the same period.



**Lot 122**  
**Steam Powered Automotive Phaeton**

Made by Georges Carette Company  
 France - Early 1900's - 10 7/8" Long  
 Excellent Condition with Minor Restoration  
 Estimate: \$3500 - \$4500

This is a very early and important steam-powered toy car. Amazingly, the steam engine component still retains the original kerosene burner. The car is outfitted with fancy spoked wheels and rubber tires, a steering tiller and a pair of headlamps. An elegant top-hatted chauffeur drives a fashionable lady through the shopping streets to do her errands. The car's interior red paint is thoroughly original, but the ivory exterior may be a very old restoration. Nevertheless, this is still an absolute stunner and an exceedingly rare toy car.



**Lot 123**  
**Hand Enameled Limousine**

Finished in Ivory & Baby Blue  
 By the Georges Carette Company  
 France - Early 1910's - 16" Long  
 Pristine Plus Condition  
 Estimate: \$6000 - \$8000

In the world of tinplate antique toy cars, Georges Carette's sixteen inch chauffeured limousine is considered positively iconic. This example represents an expensive super deluxe model that includes such features as beveled glass windows, rubber balloon tires and a hand-enameled finish. Any child that was gifted this magnificent toy would have been "over the moon" with joy and excitement.



**Lot 124**  
**Saloon Car Limousine**  
 By the Gebrüder Bing Company  
 Nuremberg - 1918 12 1/2" Long  
 Very Fine Plus Condition  
 Estimate: \$1500 - \$1800



This rounded shape passenger compartment is known as a "saloon car" look. It is strongly associated with post-WW1 design in automotive styling. This style would continue to become more exaggerated in its rounded forms during the modernist Art Deco period.

**Lot 125**  
**One Seat Open Roadster**  
 Made by Georges Carette Cie.  
 Germany - 1910 - 10 3/4" Long  
 Excellent Plus and Works Well  
 (Mudguards retouched)  
 Estimate: \$2500 - \$3000



Hand-enameled toy automobiles were the true hallmark of the German toy makers and the Carette Company made some of the very finest of these offerings. Beautiful cast lead spoked wheels complimented by realistic rubber balloon tires, along with front headlamps and gas lanterns by the windshield render these toys into miniature wonders.

**Lot 126**  
**Two Seat Open Touring Car**

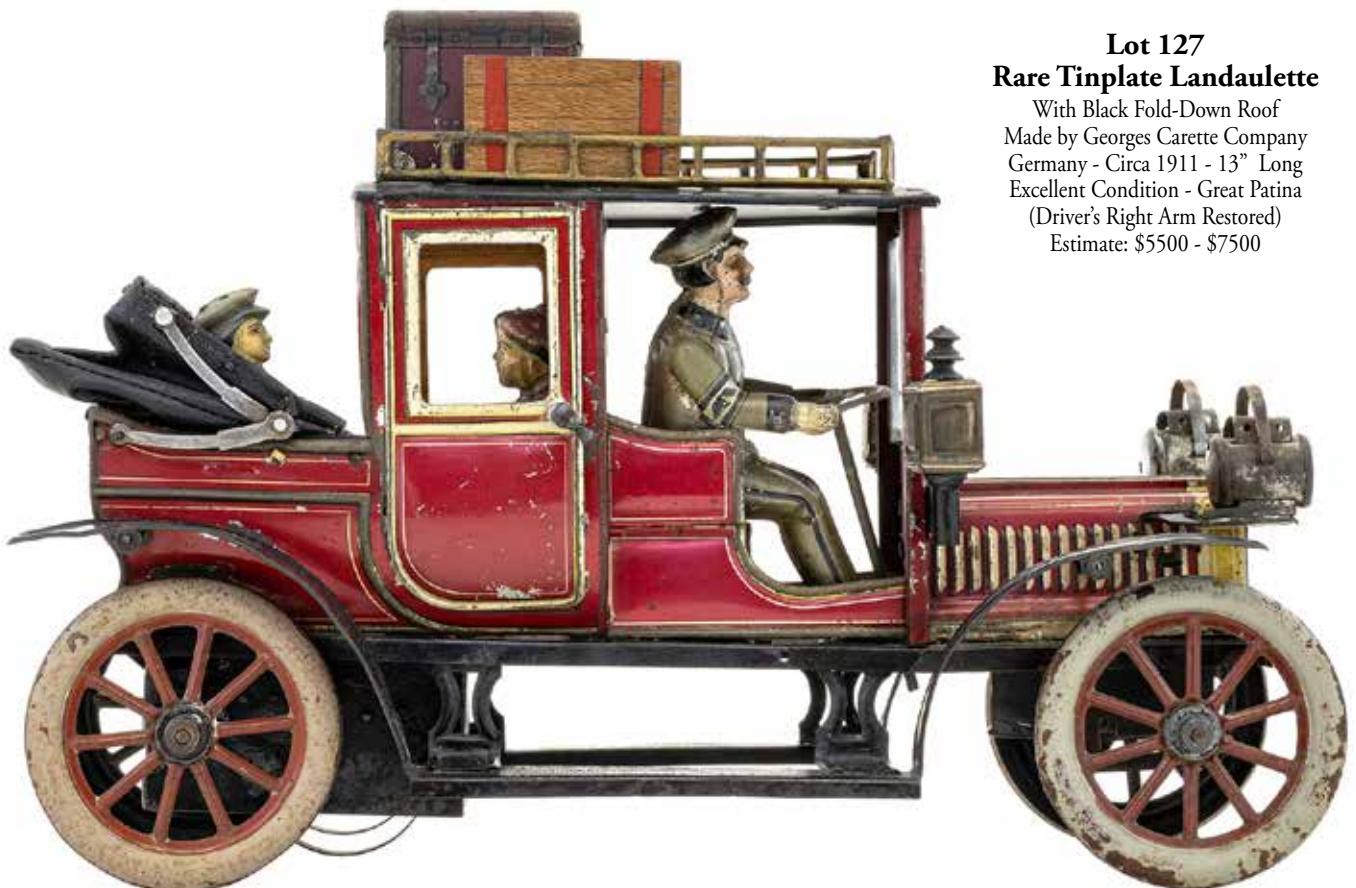
Made by Georges Carette Cie.  
 Germany - 1910 - 13" Long  
 Pristine Paint and Works Well  
 (Right Rear Door Restored)  
 Estimate: \$3000 - \$4000



Here is another genuine beauty by the Georges Carette Company. Considering this toy car is now 110 years old, this toy remains in a very superior state of preservation. When it was found, one door was detached and required restoration. Otherwise, this toy is pure and it works great.

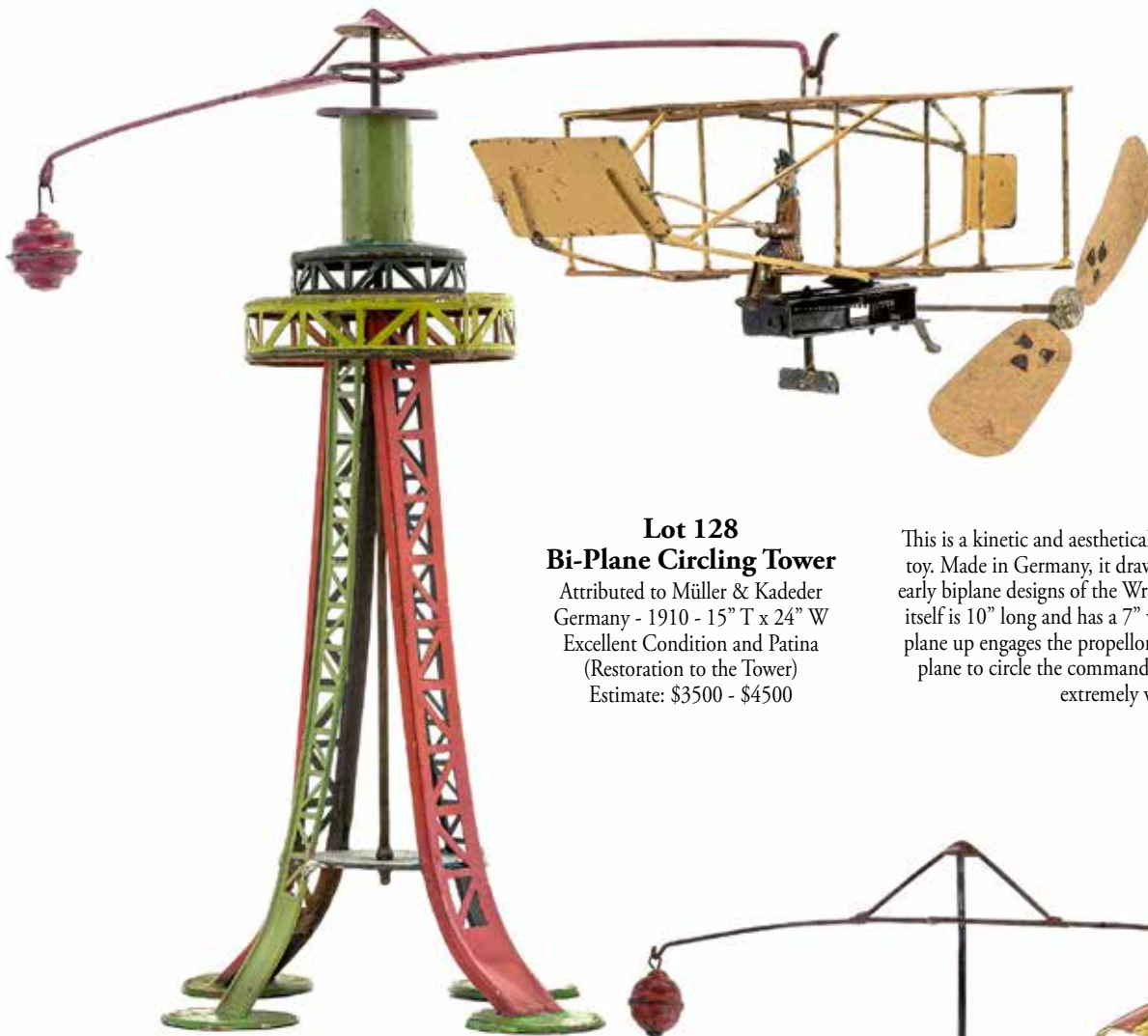
**Lot 127**  
**Rare Tinplate Landaulette**

With Black Fold-Down Roof  
 Made by Georges Carette Company  
 Germany - Circa 1911 - 13" Long  
 Excellent Condition - Great Patina  
 (Driver's Right Arm Restored)  
 Estimate: \$5500 - \$7500



Typical of early automobile making, their designs stem from horse drawn coach body forms. In this instance, it is the elegant elongated landau which provides the inspiration for this expensive car. A chauffeur is seen driving a young man and his mother as passengers. This toy is referenced on page 147 (plate 262) of David Pressland's Great Book of Tin Toys.





**Lot 128**  
**Bi-Plane Circling Tower**

Attributed to Müller & Kadeder  
Germany - 1910 - 15" T x 24" W  
Excellent Condition and Patina  
(Restoration to the Tower)  
Estimate: \$3500 - \$4500

This is a kinetic and aesthetically pleasing aeronautical toy. Made in Germany, it draws very closely from the early biplane designs of the Wright Brothers. The plane itself is 10" long and has a 7" wingspan. Winding the plane up engages the propellor, which then causes the plane to circle the command tower. The toy works extremely well.

**Lot 129**  
**The Surrealistic Aviator**

Rare Asian Daredevil Parachutist  
Probably by Sigmund Gunthermann  
Germany - 1910 - 13 1/2" T x 15" W  
Pristine and Very Bright  
Estimate: \$1500 - \$1800

This vividly hued fantasy aeronautical toy is one of the most iconic toys portraying man's intense fascination with flight during the opening years of the twentieth century. When the toy is given a vigorous winding, the propellor causes the balloon and its operator to make multiple revolutions.





**Lot 130**  
**Important Red Seaplane**

Made by Gebruder Marklin  
 Germany - In the 1915 Catalogue  
 16" Long and with 18" Wingspan  
 Very Good Condition  
 Estimate: \$7000 - \$9000

At this time, there are only three known extant specimens of this spectacular pusher twin-wing seaplane. It was featured prominently in Marklin's 1915 sales catalogue as reference #5424. A similar example is illustrated in David Pressland's Great Book of Tin Toys on page 296 (Plate 571). This actual example offered for sale here was featured on the cover of the January 2019 issue of Antique Toy World. The plane's propellor spins when the toy is wound. There is some significant paint loss to the wings, but the toy is totally original condition and presents beautifully. This is a true museum piece.





### Lot 131

#### The Stuttgart Hauptbahnhof

Gauge 1 Art Deco Train Station  
Made by Gebrüder Marklin  
Germany - Circa Mid 1920's  
26" W x 12 1/2" D x 14" T  
Pristine without Restoration  
Estimate: \$4000 - \$5000

### Lot 132

#### "New York Central Lines"

Scarce Gauge 1 Train Set  
Made by Gebrüder Marklin  
Germany - Circa late 1910's  
Loco is 13" L - Train is 31" L  
Pristine with Original Box  
Estimate: \$5500 - \$7500

Here we have a beautiful scarce train set made for the American Market shortly after WW1. It sits in front of Marklin's version of the Stuttgart Central Station, which opened its doors to the public in 1922. This station was one of the very first in the world to have subterranean rail platforms that could be accessed in front of the main terminal.

This detail is actually visually referenced in the Marklin toy by their inclusion of descending stairs enclosed by dark green railing. Both of these toys are in very superior condition.





**Lot 133**  
**Three Stack Ocean Liner "ODER"**

Made by Gebruder Marklin  
 Germany - 1912 - 26" Long  
 Mostly Excellent Plus Condition  
 Hull with old period restoration.  
 Estimate: \$12,000 - \$15,000

This grand three-stacked ocean liner is named for the Oder River, which rises in northeast Czech Republic and flows northwest, forming part of the border between Germany and Poland. This land demarcation is known as the Oder-Neisse Line. This boat dates before the advent of WW1 and is an excellent illustration of the Marklin Company's historic output of classic ocean liner forms. Larger boats will often have four smokestacks. Though there is some old period "in use" maintenance to the paint of the hull, this boat is largely untouched.





**Lot 134**  
**Broadway & 4th Avenue Trolley**

Made by Merriam Mfg. Company  
 Durham, Ct. - 1880 - 11 1/2" Long  
 Excellent Plus Condition  
 Estimate: \$3000 - \$4000



As a person fascinated by New York history, I find it very interesting to see the "Broadway & 4th Avenue" destinations listed on the side of this trolley. These were the most popular shopping streets in the city at this time. Miniature realities always imitate grander ones.



**Lot 135**  
**Hoop Skirted Girl Balance Toy**

Made by Althof-Bergman Company  
 New York City - 1870's - 5" Tall  
 Very Good Plus Condition  
 Estimate: \$2250 - \$2750



**Lot 136**  
**Platform Toy Depicting a Guide**

Leading a Boy Seated on a Camel  
 Made by Althof- Bergman Company  
 New York City - 1880 - 9 1/4" Long  
 Excellent Plus Condition  
 Estimate: \$4000 - \$5000

Althof-Bergman apparently made a line of multi-figured platform toys with exotic themes. In our June 26th sale of the Paul Cole Collection, there was a similarly scaled platform toy depicting a circus trainer walking beside a camel and a baby elephant.



**Lot 137**  
**Clockwork Locomotive**  
**"Nevada"**

Made by Merriam Mfg. Company  
 Durham, Ct. - 1880's - 9 1/2" Long  
 Outstanding Original Paint Condition  
 (Mechanism Presently Not Working)  
 Estimate: \$3500 - \$4500

This is a particularly well conceived locomotive toy by the designers at Merriam Mfg. As usual, they paint and ornament the surface of the train in an absolutely perfect and visually harmonious way. It's a real treat to feast your eyes upon.

**Lot 138**  
**White Horse Platform Toy**

Made by the Merriam Mfg. Company  
 Durham, Ct. - 1880's - 6 1/2" Long  
 Ex - Donal P. Markey Collection  
 Mint Condition & Very Bright  
 Estimate: \$1500 - \$1800

Early American tin toys are almost never found in such outstanding untouched pristine condition as the four toys presented on this page. They are all from the renowned Donal Markey Collection.



**Lot 139**  
**Horse & Colt Platform Toy**

Rare & Unusual Blue Base  
 Made by the Merriam Mfg. Company  
 Durham, Ct. - 1880's - 4 5/8" Long  
 Virtually Mint Condition  
 Estimate: \$1750 - \$2250

These horses retain a phenomenal surface that includes brown spatter decoration.



**Lot 140**  
**Rare & Important Hoop Toy**

with a Gold Stained Flat Horse  
 Made by the Merriam Mfg. Company  
 Durham, Ct. - 1880's - 6" Diameter  
 Virtually Mint and Very Bright  
 Estimate: \$2250 - \$2750

**Lot 141**  
**Black Sheep Platform Toy**

Made by the Merriam Mfg. Company  
 Durham, Ct. - 1880's - 6 1/2" Long  
 Pristine Plus Condition  
 Estimate: \$1200 - \$1500

Seems very very odd to write this, but we have never before seen a black colored sheep on an American tin toy. Gorgeous luminous quality.







### Lot 142 Salesman Sample Sled

Pennsylvania - Late 1890's  
10" L x 4" W x 2 3/4" T  
Superior Pristine Condition  
Age Split to Wood Sled Board  
Estimate: \$1750 - \$2250

The paint decoration scheme for this salesman sample is truly special. The sled board is wood and the runners are shaped brass. It is finished in Christmas green and red. Additionally, the sled has yellow pin-striping and a centrally placed pink rose and rosebuds. This item fits the rigorous values of "crème de la crème" perfectly.

### Lot 143 Salesman Sample Sled

Model of Steel Flyer No. 0  
The Turner Thomas Company  
Chicago - 1895 - 8 3/4" L x 3" W  
Pristine Plus - Nice Warm Patina  
Estimate: \$950 - \$1250

This adorable salesman sample is made of wood and thick gauge sheet steel. Top of sled reads Steel Flyer No. 0 and is finished with pin-striping and a floral bouquet motif. Condition is terrific.



### Lot 144 Small Painted Tin Toy Sled

Unknown American Manufacturer  
Dated 1861 - 7 1/4" L x 3 7/8" W  
Pristine All Original Condition  
Estimate: \$1500 - \$2000

Over the years, many collectors have marveled at the early patent date stenciled on the underside of the sled. This particular specimen is painted most appealingly in shades of olive green and mustard yellow. It is even finished with a small floral design like actual sized children's sleds. The condition is very superior for an early tin toy.

**Lot 145**  
**Horse Drawn Omnibus**

Francis, Field & Francis Company  
Philadelphia - 1840's - 14 1/2" Long  
Perelman Toy Museum Collection  
Excellent Plus Condition  
(Outstanding State of Preservation)  
Estimate: \$22,500 - \$27,500



One could justifiably argue that this gorgeous toy omnibus is one of the most important early tin toys to ever be sold at auction. The toy's maker was Francis, Field & Francis. They occupied premises at 80 North 2nd Street (between Race and Arch Streets) in Philadelphia. They were alternately known as the Philadelphia Tin Toy Manufactory and they began operating from this address in 1839. Their products possess a very recognizable distinctive look, often vividly colored and decorated with floral motifs by hand. This approach to toy design is inextricably linked to the long-standing tradition of toleware decoration in Pennsylvania. For many years, this toy was among the proudest possessions of Leon Perelman. His museum in Society Hill displayed the Omnibus very prominently because he loved it so much.





**Lot 147**  
**Rare Weighted Shoofly Rocking Toy**

By Merriam Manufacturing Company  
 Durham, Ct. - 1880 - 14" T x 8 1/2" W  
 Excellent Plus & Very Rich Color  
 (Nominal Restoration to the Base)  
 Estimate: \$3500 - \$4500

This construction of this weighted rocking horse is most unusual. It is composed of two halves of Merriam's classic drop-tail horse sandwiching a curved seat to accommodate a small doll.



**Lot 146**  
**Horse on Serpentine Base**

Patented by William Harwood  
 For the Merriam Mfg. Company  
 Durham, Ct. - 1880 - 5 3/4" L  
 Excellent Plus Condition  
 Estimate: \$3500 - \$4500

Merriam produced the horse on serpentine base in 3 sizes. This is the medium one. This is the only example of this toy we have seen with a bell.



**Lot 148**  
**Large Red Express Wagon**

By Merriam Manufacturing Company  
 Durham, Ct. - 1880's - 19 1/2" Long  
 Excellent All Original Condition  
 Estimate: \$4500 - \$5500

It is unusual to find large American tin toys in such great original condition as this Express Wagon. It's always a lot of fun to fill up the empty flatbed of the dray with all sorts of miniature goodies.

**Lot 149**  
**"IMPERIAL" Paddlewheel Steamboat**

Unknown American Manufacturer  
 Possibly by Merriam Mfg. Company  
 Circa Mid 1850's - 10" Long x 5" Tall  
 Pristine All Original Condition  
 Estimate: \$5500 - \$7500

This magnificent early tin boat is a true enigma as to the identity of its maker. At first inspection, one might think that it was made by Francis, Field and Francis of Philadelphia. However, this assumption would be wrong, even though they were known to produce a line of toys as early as 1836. The use of the perforated boat railing might suggest Althof-Bergman to many collectors, but they were not in business before the advent of the Civil War. A better attribution for this toy is the Merriam Company in Durham, Connecticut. It has recently been brought to my attention that they were producing toys as early as 1851. This coincides well with the dating. Furthermore, the use of violet blue, pale green and tin staining are all strongly associated with the work of Merriam. The stencil decorated paddle wheel housings are truly amazing and the American flag is original to the toy.



**Lot 150**  
**Figures Striking Bells**

Merriam & Althof-Bergman  
 American - Circa Mid 1870's  
 Ex - Jay Lowe Toy Collection  
 Excellent All Original Condition  
 Estimate: \$7500 - \$10,500

This is certainly one of the most unusual American tin bell ringers you will ever have the chance to acquire. Once again, making a firm attribution as to the maker is difficult because the toy demonstrates stylistic traits and known features of two different toy manufacturers. Clearly, the horse and the figures are by Merriam Mfg. Company. The wheels and the bells and the unusual drive mechanism housed in the red tin cylinder are probably the contribution of Althof-Bergman. Collaboration in early toy making happened a lot more frequently than previously imagined. In any case, this is a fascinating toy in great original condition.





**Lot 151**  
**The Shakespearean Clown Jigger**

Made by the Automatic Toy Works  
New York City - Circa Late 1870's  
Jim Yeager to Paul Cole Collection  
Near Mint Condition & Works Well  
Estimate: \$1500 - \$2000



**Lot 152**  
**Preacher in His Pulpit**

On a Red Painted Base  
By Ives, Blakeslee & Company  
Bridgeport, Ct. - Late 1870's  
Excellent Plus Condition  
Estimate: \$1750 - \$2250

**Lot 153**  
**Scarce Triple Dancers on a**

Cake-Plate Shaped Stage  
By Ives, Blakeslee & Company  
Bridgeport, Ct. - Circa 1880's  
From Blair Whitton's Collection  
Pristine Original Condition  
Estimate: \$3500 - \$4500

This magnificent mechanical toy represents the most fully developed incarnation of "up-down" dancing figures on a platform. Here, you can see three nicely dressed lady parishioners doing a sort of church conga dance.





**Lot 154**  
**Suspended Clown Jigger**

By Ives, Blakeslee & Company  
Bridgeport, Ct. - Mid 1880's  
Ex - Haradin Family Collection  
Pristine Plus with Original Box  
Estimate: \$3000 - \$4000

This is one of the most fascinating mechanical novelties ever devised. In order to perform its rhythmic dance upon the parlor table, the toy must be suspended from a chain. Ives offered this toy as a black male dancer; as an unsightly and buxom Irish lass; and as white-faced clown.



**Lot 155**  
**Hand Propelled Velocipede**

By Ives, Blakeslee & Company  
Bridgeport, Ct. - Early 1880's  
From Louis Hertz Toy Collection  
Pristine Condition - Strong Color  
Estimate: \$10,000 - \$15,000

In their splendid velocipede toy, Ives' illustration of cycling reached a level of realism that no other mechanical toy ever attained in the 19th century. The blonde haired rider grasps the activating levers in his hands. When the toy is given a good winding, he is seen "pushing and pulling" these red sticks, as if he is driving the action of the back wheels to propel him forward. The inclusion of the tin horse head not only adds a great decorative touch, but simultaneously implies the speeds at which one could travel by cycling. Before automotive speed was measured in horsepower, cycling speed was. A gorgeous specimen of a very rare toy.





**Lot 156**  
**Scarce Small State Bank**  
 Thatched Roof & Closed Window  
 Unknown English Maker  
 Early 1900's - 3 1/4" T  
 Pristine Plus Condition  
 Estimate: \$500 - \$700



**Lot 157**  
**Small Painted Domed Mosque**  
 Made by Grey Iron Company  
 Mount Joy, Pa. - 1910 - 3 1/8" T  
 Illustrated Page 33 in Pierce  
 Pristine with Good Patina  
 Estimate: \$350 - \$450



**Lot 158**  
**Small Painted State Bank**  
 Silver with Gold Details  
 American - 1900 - 3 1/8" T  
 Illustrated Page 220 in Pierce  
 Near Mint and Luminous  
 Estimate: \$750 - \$950



**Lot 159**  
**City Bank with Crown**  
 Unusual Eggplant Color with  
 Terrific Metallic Highlights  
 American - 1880 - 5 1/2" T  
 Pristine Original Condition  
 Estimate: \$2250 - \$2750



**Lot 160**  
**Rare Red Finial Bank**  
 Made by Kyser & Rex Company  
 Frankford, Pa. - 1887 - 5 3/4" T  
 Excellent Condition  
 (Very Minor Repaint to One Side Panel)  
 Estimate: \$600 - \$800



**Lot 161**  
**One Story House Bank**  
 By J. & E. Stevens Company  
 Cromwell, Ct. - 1890 - 3 1/4" T  
 Pristine Plus Condition  
 Estimate: \$300 - \$400



**Lot 162**  
**Mint Green Castle Bank**  
 Made by Kyser & Rex Company  
 Frankford, Pa. - 1880's - 3" T  
 Near Mint (Twist Pin Replaced)  
 Estimate: \$550 - \$750



**Lot 163**  
**Small Green Crown Bank**  
 By J. & E. Stevens Company  
 Cromwell, Ct. - 1890's - 3" T  
 Pristine Plus Condition  
 Estimate: \$700 - \$900



**Lot 164**  
**Unusual Brass Banque with a**  
**Spread-Winged Eagle Finial**

French - 1910's - 6 3/4" Tall  
 Excellent Plus Condition  
 Estimate: \$300 - \$400



**Lot 165**  
**Brass Cupola Bank with**  
**Hexagonal Spear Finial**

French - 1900's - 7" Tall  
 Near Mint - Mellow Patina  
 Estimate: \$750 - \$950

With its deeply ridged roof, simulated masonry walls and unusual base shape, this is definitely one of the most attractive European building banks we have ever seen.



**Lot 166**  
**Brass Cupola Bank**  
**With Gladiator Final**

French - 1900's - 7 1/4"  
 Pristine Original Condition  
 Estimate: \$600 - \$800

In this version of the gladiator finial, the warrior is portrayed carrying a shield and his drawn sword is by his side, rather than up in the air.



**Lot 167**  
**Painted Caisse Type Bank**  
**With a Flying Bird Finial**

French - 1900's - 6 1/2" T  
 Very Fine Plus Condition  
 Estimate: \$600 - \$800

This unusual bank is made of a lead/iron alloy. The crenellated treatment of the rooflines makes for a very dynamic looking building.





**Lot 168**  
**Large Tent Bank**

Unknown American Maker  
Early 1900's - 5 3/8" Tall  
Has 3 1/2" Circumference  
Pristine Original Condition  
Estimate: \$1000 - \$1500

This pair of tent banks are seldom found. Nothing is known about their manufacture, but the flaring glass enclosures must have been exceedingly difficult to fabricate. This represents an exceptional example of the large Tent Bank.



**Lot 169**  
**Small Tent Bank**

Unknown American Maker  
Early 1900's - 4 3/4" Tall  
Has 2 7/8" Circumference  
Excellent Plus Condition  
Estimate: \$750 - \$950

This example of the bank uses a tin enclosure decorated with graphics of a spread-winged eagle. This makes for a very handsome looking still bank. We have not seen another like this one.



**Lot 170**  
**The Temple of Hercules Victor**

Rare Brass Souvenir Building Bank  
Probably European - Circa Late 1930's  
6 1/2" Tall with a 4 1/2" Circumference  
Bought from Mike Henry  
Near Mint Condition and Patina  
Estimate: \$1000 - \$1500

The Temple of Hercules Victor is the earliest surviving marble building in Rome. This type of architectural structure is called a tholos, a round temple of Greek design entirely encircled by a colonnade. Though it is referred to as the Temple of Hercules, modern scholars do not genuinely know to whom the temple was dedicated and what purpose it served.



**Lot 171**  
**The Home Bank**

By H. L. Judd Mfg. Company  
 Wallingford, Ct. - Circa 1895  
 Near Mint - Great Green Wash  
 Estimate: \$800 - \$1000

The profusion of "green wash" highlighting on this bank is nearly without compare. A truly stunning example of this bank.



**Lot 172**  
**The Wembley Building Bank**

English - Late 1920's - 3 3/8" Tall  
 Illustrated on p. 110 of Pierce Book  
 Near Mint with Terrific Japanning  
 Estimate: \$3500 - \$4500

The Wembley Exhibition of 1924 - 1925 housed an entire miniature model of the British Empire.



**Lot 173**  
**Important Cast Iron Church Bank**

English - Circa 1880's - 7 1/4" Tall  
 Illustrated on p. 33 of Pierce Book  
 Pristine All Original Condition  
 Estimate: \$3000 - \$4000

Without any doubt, this is definitely one of the most fascinating cast iron building banks we have ever come across. It uses the vertical arched roof format of a "birth bank". However, it was certainly not created to be a birth bank, at least not in the conventional sense of saving money for medical and educational expenses. Rather, it may have been created as a means by which alms could be collected to pay for the building of a new church or the renovations to an already existing church. In any case, it is hugely compelling as an object.



**Lot 174**  
**The Gingerbread House**

Rare Multicolored Version  
 Austrian - 1910's - 3 7/8" Tall  
 Bought from Donal P. Markey  
 Illustrated p. 55 in Pierce Book  
 Near Mint with Stunning Color  
 Estimate: \$2500 - \$3000

**Lot 175**  
**Very Unusual Bungalow Bank**

Orange, Green, Red & Blue  
 By Grey Iron Casting Company  
 Mount Joy, Pa. - Circa 1920  
 Pristine with Rich Patina  
 Estimate: \$800 - \$1000

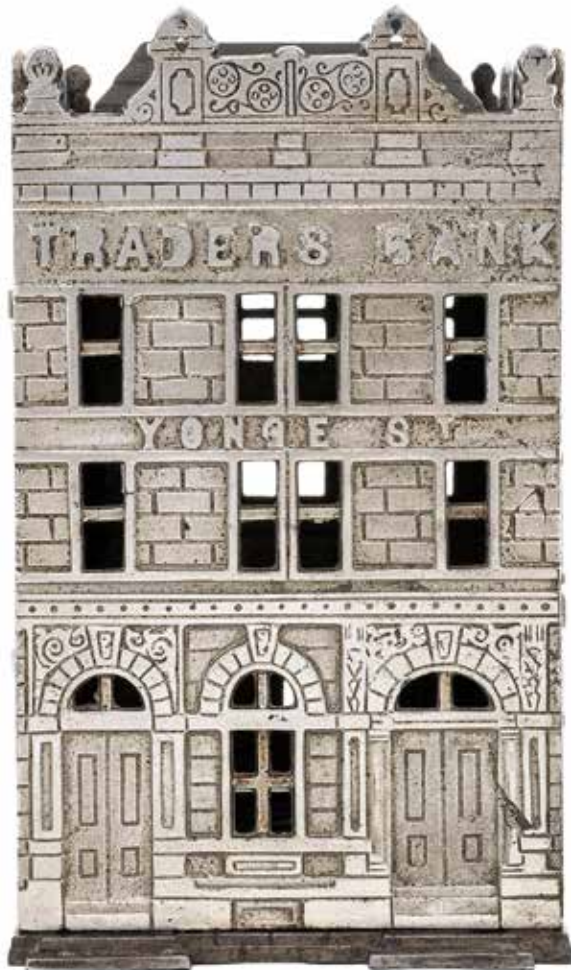






**Lot 176**  
**Fidelity Trust Vault Bank**

Aka Little Lord Fauntleroy  
By J. Barton Smith Company  
Philadelphia - 1890 - 6 1/2" L  
Pristine Plus - Rich Thick Paint  
Estimate: \$750 - \$950



**Lot 177**  
**The Traders Bank of Canada**

Registered by Jarvis in 1891  
5 1/2" W x 10" D x 8 1/2" T  
Pristine Plus Condition (Exceptional Nickel Plating)  
All Spires & Finials Intact  
Estimate: \$1500 - \$1800

At the time it was built, the Traders Bank of Canada became one of the tallest buildings in the Toronto skyline. This is an extraordinary example.



**Lot 178**  
**The Henley Tower Bank**

English - Circa Early 1900's  
6" Wide x 6" Deep x 10 3/4" Tall  
John & Adrienne Haley Collection  
Pristine Plus Condition  
Estimate: \$3500 - \$4500

This Elizabethan Tower still stands adjacent to the church in Henley-on-Thames. Very scarce color.



**Lot 179**  
**Large Boston State House**

Made by Smith & Egge  
American - 1880's - 6 3/4" Tall  
Pristine Condition - Good Patina  
Estimate: \$15,000 - \$18,000

Recently, an exquisite example of the Boston State House still bank set a world record price at auction. Often times, when such records are reported by the press, a second great example surfaces for auction too. And so, this beauty, long buried in a private collection, has also come to market. This bank retains its seldom found original trap. It's not as good as the spectacular "Markey" specimen, but it's pretty damn close.





**Lot 180**  
**Large Flat Top State Bank**

Probably by Kyser & Rex Company  
 Frankford, Pa. - 1880's - 5 1/4" Tall  
 From The Donal Markey Collection  
 Illustrated on p. 213 of Pierce Book  
 Near Mint with Deep Rich Color  
 Estimate: \$3500 - \$4500

This extraordinary still bank is finished with an unprecedented six different colors. It's a genuine beauty and might be the finest example of this bank in the world.

**Lot 181**  
**Large Red, Yellow & Blue Cupola Bank**

Totally Unique Assembly Construction  
 Possibly by Vermont Novelty Works  
 From the Donal P. Markey Collection  
 Pristine Plus and Very Bright  
 Estimate: \$2000 - \$2500

We have never ever encountered another example of the Cupola Bank assembled in this manner. In fact, this esoteric piece probably represents the earliest attempt at producing a cupola style house bank. Clearly, this method of absurdly complex assembly must have been abandoned forthwith.



**Lot 182**  
**Home Bank - Narrow Building**

By the J. & E. Stevens Company  
 Cromwell, Ct. - 1880 - 5 1/4" Tall  
 Bought from Donal P. Markey  
 Pristine Plus Condition  
 Estimate: \$3000 - \$4000

The light purple-gray hue known as "mauve" was discovered entirely by accident in 1859. It was the first synthetic organic dye in history. This lucky discovery not only revolutionized the field of chemistry, but it also came to have many applications in the arts, including painting, fashion and interior design. As the color mauve became all the rage, the designers at the J. & E. Stevens Company cashed in on this trend, finishing many of their toy banks in mauve. This is a spectacular illustration of their work with the color mauve.





**Lot 183**  
**Home Bank with Dormers**

By J. & E. Stevens Company  
 Cromwell, Ct. - Early 1880's  
 Illustrated p. 170 in Pierce Book  
 Near Mint - Great Painted Details  
 Estimate: \$12,000 - \$15,000

For the mansard shaped roof and for the building's foundation, we find the Stevens Company once again deploying the newly popular color mauve. This is an absolutely sublime specimen of an exceptionally scarce bank.

**Lot 184**  
**City Bank with Chimney**

Thomas Swan Designer  
 Unknown American Maker  
 Circa Mid 1870's - 6 3/4" Tall  
 From Donal Markey Collection  
 Illustrated p. 160 in Pierce Book  
 Near Mint - Sensational Colors  
 Estimate: \$12,000 - \$15,000

Leave it to Donal Markey to always turn up and acquire the best of the very best. This magnificent City Bank uses seven different colors to achieve its stunning visual effect, including green, brown, mauve, navy blue, dark gray, red and gold. This will feature as a wonderful addition to any great bank collection.







**Lot 185**  
**Building with Belfry**

By Kenton Hardware Company  
 Ohio - Late 1890's - 8" Tall  
 From Donal Markey's Collection  
 Illustrated p. 195 in Pierce Book  
 Near Mint with Rich Japanning  
 Estimate: \$5000 - \$7000

The Building with Belfry is intended to look like the elegant neoclassical statehouses & courthouses we see all across America. This bank is one of the most complicated architectural toy banks ever made. Fourteen different parts are required for assembly.



**Lot 186**  
**Church Towers Bank**

Rare Electroplated Finish  
 The Eddy & Stephen's Company  
 Plainville, Ct. - Circa Late 1890's  
 From Donal Markey's Collection  
 Mint Condition - Original Windows  
 Estimate: \$3000 - \$4000

WOW - The warm burnished finish of this electroplated Church Towers Bank make it the most beautiful specimen we have ever set our eyes upon. Dazzling is the only word than can suitably describe it. Retains the rare original trap.



**Lot 187**  
**Mission Church Rectory Bank**

Scarce Nickel Plated Example  
 Unknown American Manufacturer  
 Circa Late 1890's - 7 1/4" W x 4" T  
 From Donal Markey's Collection  
 Near Mint with the Original Trap  
 Estimate: \$3500 - \$4500

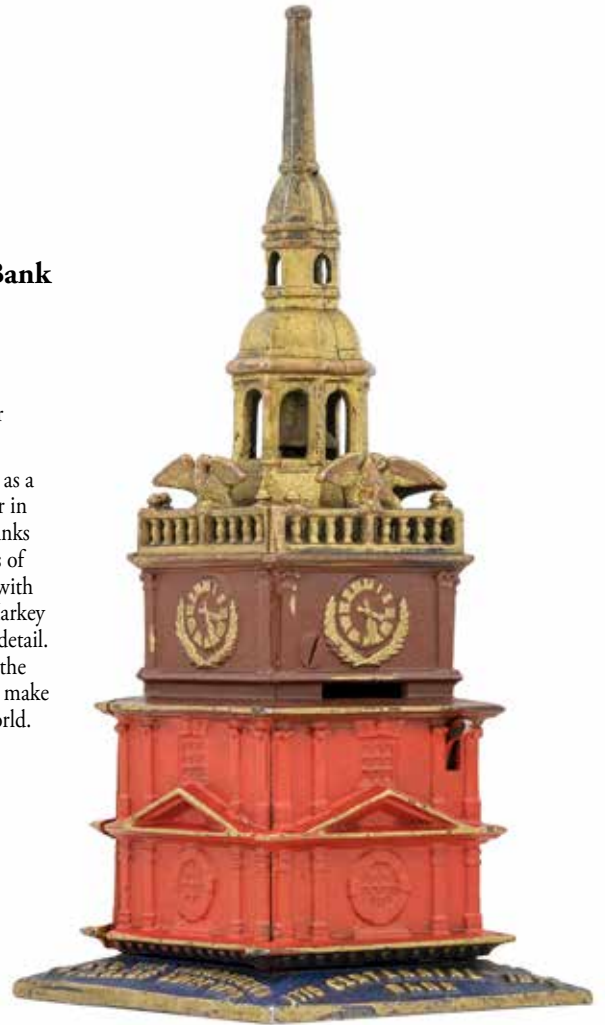
The Mission Church was completed in 1870 in the Roxbury suburbs of Boston, Massachusetts. The Rectory Building was added in the late 1890's. It seems very plausible that these rare toy banks were created as alms boxes to collect funds with which to build the actual rectory. The Markey example retains a particularly great amount of the nickel plated surface.



**Lot 188**  
**Independence Hall Tower Bank**

Deluxe Polychrome Finish  
 By the Enterprise Mfg. Company  
 Philadelphia - 1876 - 9 1/2" Tall  
 From Donal Markey's Collection  
 Mint Condition - Very Vivid Color  
 Estimate: \$7500 - \$9500

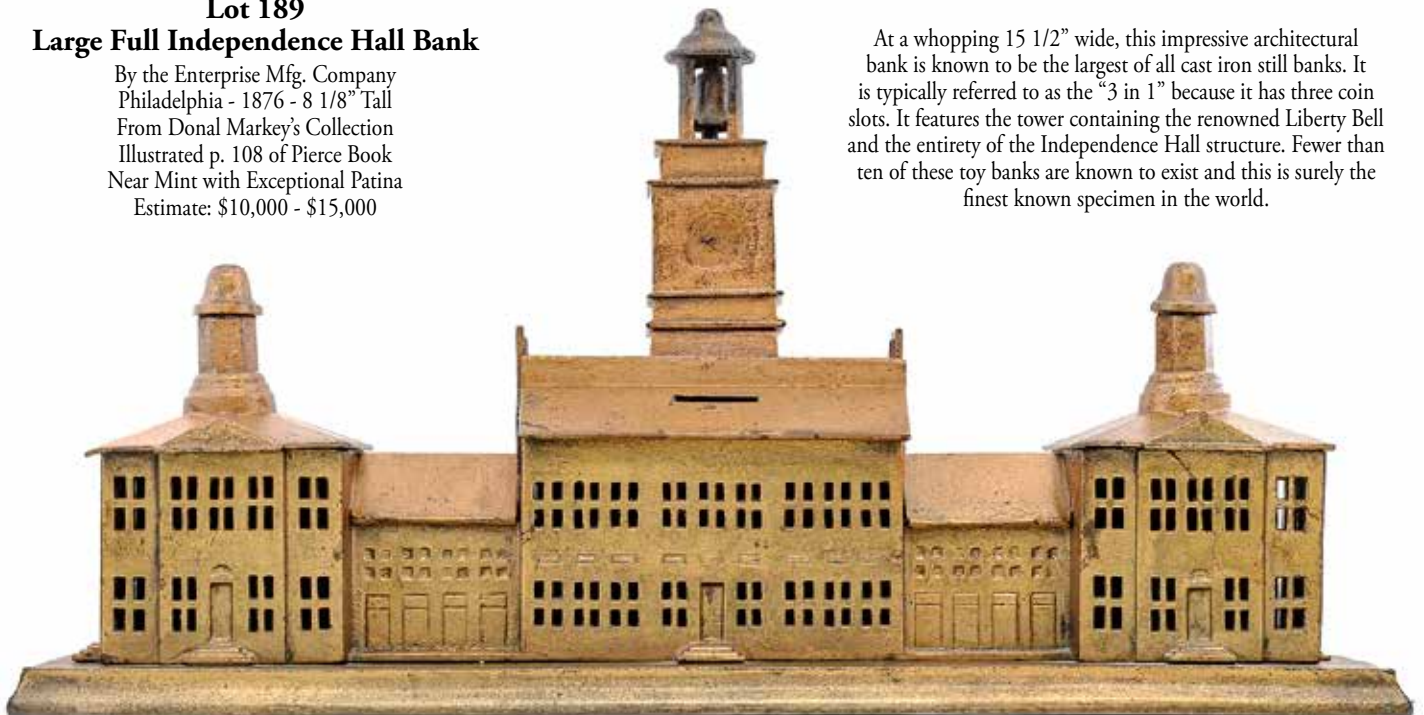
Enterprise Manufacturing was selected as a local toy vendor at the Centennial Fair in Philadelphia. Their cast iron replica banks depicting various architectural aspects of Independence Hall were very popular with attendees to the fair. Once again, this Markey provenance bank is exceptional in every detail. The fully saturated colors, along with the profusion of gold and copper highlights, make this one of the best examples in the world.



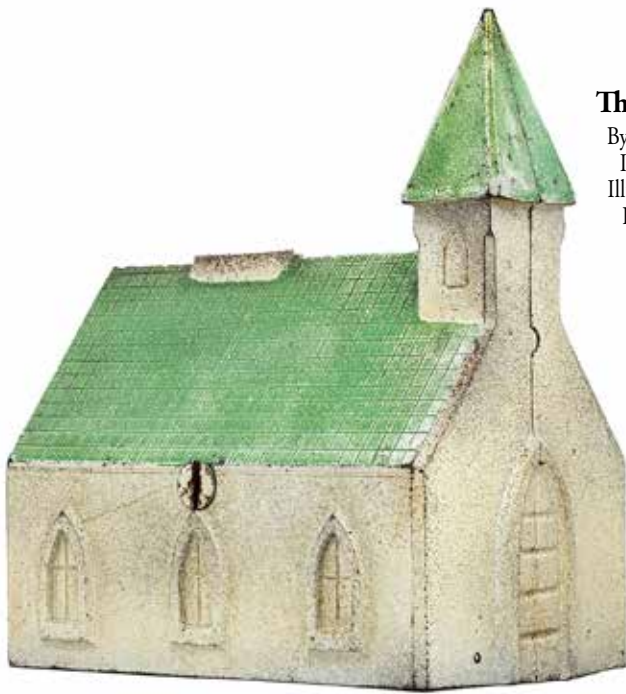
**Lot 189**  
**Large Full Independence Hall Bank**

By the Enterprise Mfg. Company  
 Philadelphia - 1876 - 8 1/8" Tall  
 From Donal Markey's Collection  
 Illustrated p. 108 of Pierce Book  
 Near Mint with Exceptional Patina  
 Estimate: \$10,000 - \$15,000

At a whopping 15 1/2" wide, this impressive architectural bank is known to be the largest of all cast iron still banks. It is typically referred to as the "3 in 1" because it has three coin slots. It features the tower containing the renowned Liberty Bell and the entirety of the Independence Hall structure. Fewer than ten of these toy banks are known to exist and this is surely the finest known specimen in the world.

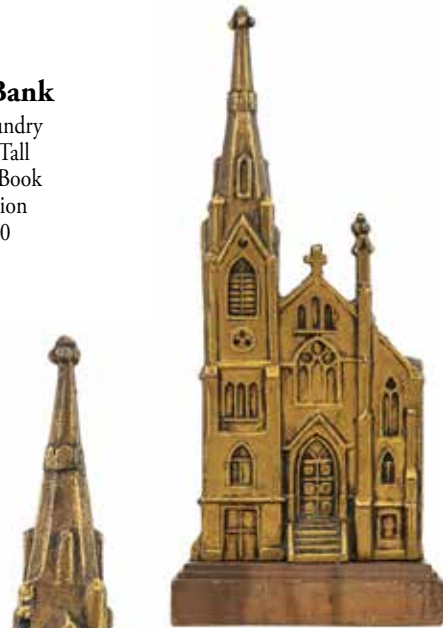






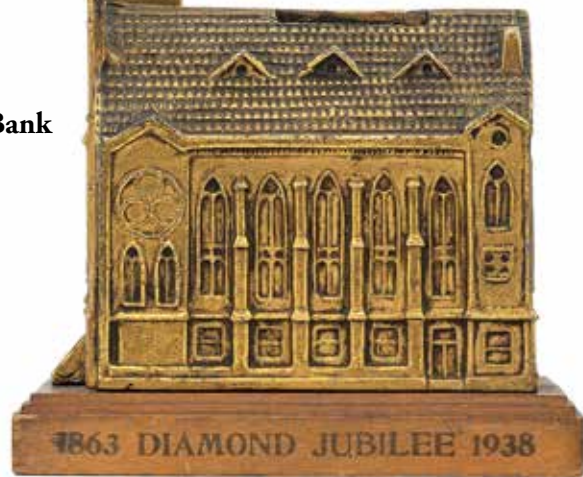
**Lot 190**  
**The New Church Bank**

By Chicago Hardware Foundry  
Illinois - 1950's - 6 5/8" Tall  
Illustrated Page 17 Pierce Book  
Pristine Original Condition  
Estimate: \$950 - \$1250



**Lot 191**  
**Unusual Presbyterian Church Bank**

75th Jubilee Anniversary (1863 - 1938)  
American - Late 1930's - 5" Tall  
Excellent Original Condition  
Estimate: \$1000 - \$1500



**Lot 192**  
**New England Church with Crucifix**

Unknown American Maker  
Circa Late 1930's - 7 1/2" Tall  
Near Mint Condition & Intact  
Estimate: \$2500 - \$3500



This is an absolutely sublime example of an extremely rare bank.

**Lot 193**  
**Old South Church Still Bank**

Large Open Slots in the Roof  
 Probably made by Smith & Egge  
 Boston - Mid 1880's - 9 1/2" Tall  
 Gorgeous Original Paintwork  
 (Stress crack to one side of roof)  
 Estimate: \$5500 - \$7500

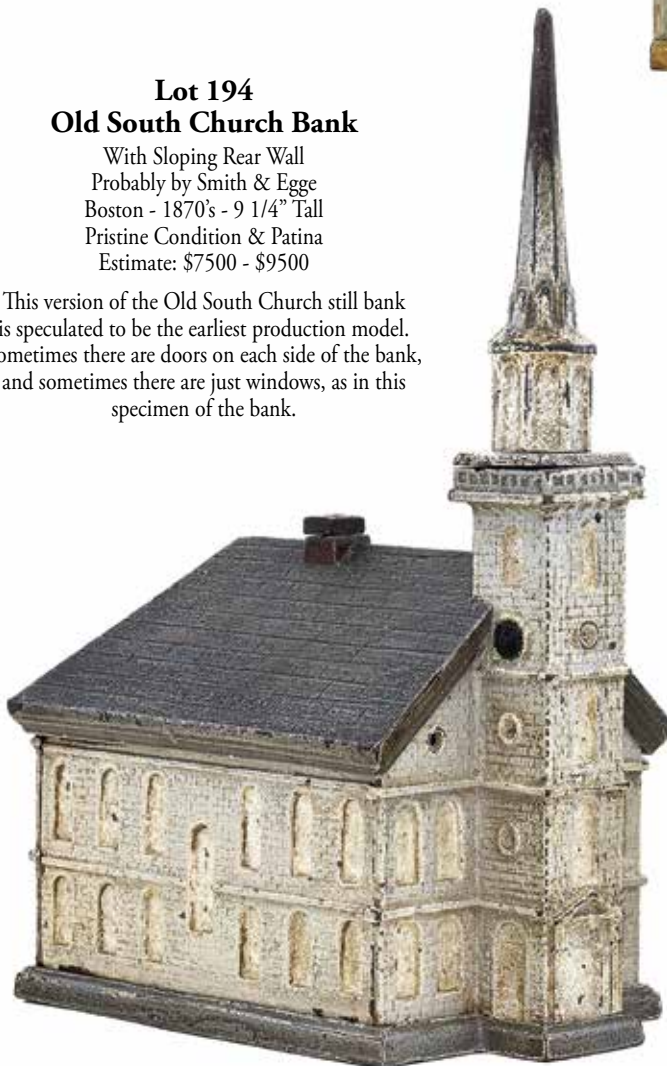
Very few examples of the "slotted roof" version of the South Church bank exist. This blue-gray and gold specimen is a genuine beauty. Sadly, there was an intrinsic flaw in the design for this bank. When the screw and nut are tightened too strongly, a massive amount of pressure builds up in the roof as it is pulled down on to building's upright walls. However, this stress fracture should not deter any serious collector from acquiring this magnificent toy bank.



**Lot 194**  
**Old South Church Bank**

With Sloping Rear Wall  
 Probably by Smith & Egge  
 Boston - 1870's - 9 1/4" Tall  
 Pristine Condition & Patina  
 Estimate: \$7500 - \$9500

This version of the Old South Church still bank is speculated to be the earliest production model. Sometimes there are doors on each side of the bank, and sometimes there are just windows, as in this specimen of the bank.







**Lot 195**  
**Three Bicyclists Riding Abreast**

Made by the Ideal Toy Company  
Pennsylvania - 1895 - 5" Long  
Excellent Plus Condition  
Estimate: \$1200 - \$1500

Ideal also made this toy using a significantly larger middle cyclist. In truth, all early bicycle toys are seen as very scarce and desirable by collectors.



**Lot 196**  
**The Waltzing Couple**

Spinning Top Novelty  
By Ives, Blakeslee & Company  
Bridgeport, Ct. - 1890 - 4" Tall  
Excellent Plus Condition  
Estimate: \$75 - \$125



**Lot 197**  
**Crawling Baby Girl**

By Ives, Blakeslee & Company  
Bridgeport, Ct. - 1890 - 5" Long  
Pristine Condition & Patina  
Estimate: \$750 - \$950

The young girl crawls across the parlor floor very convincingly. This is a particularly sublime specimen of an extremely scarce toy.



**Lot 198**  
**Old Dutch Cleanser**

Rare Cast Iron Novelty Toy  
Made by Hubley Mfg. Company  
Lancaster, Pa. - Circa Early 1930's  
From the Alan Joy Collection  
Near Mint - Exceptional Color  
Estimate: \$9000 - \$12,000

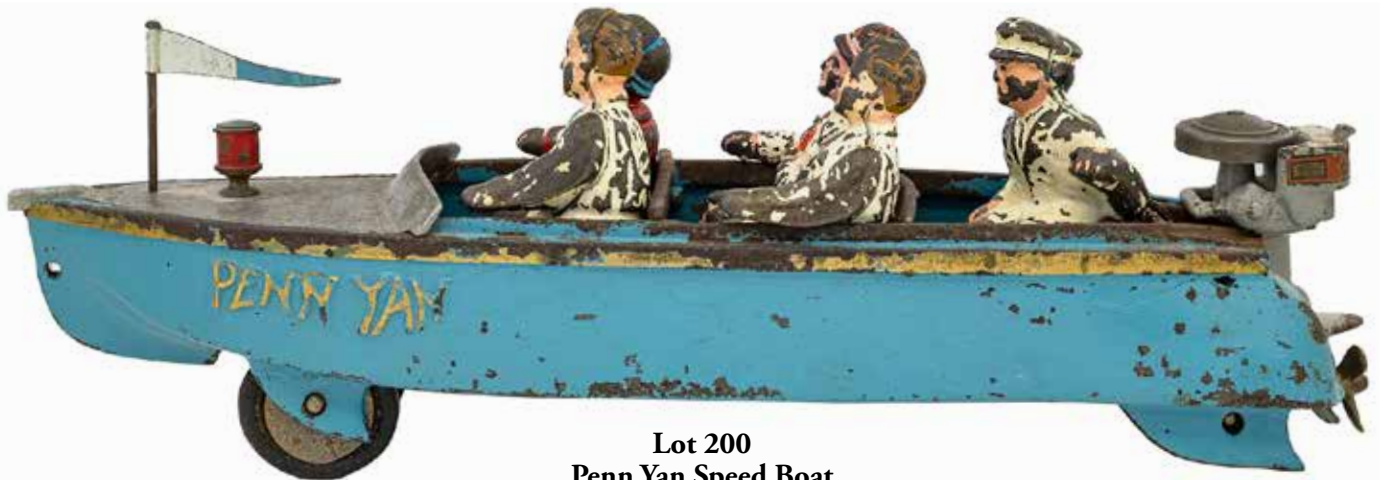
The "Old Dutch Cleanser" is Hubley's rarest and most actively articulated cast iron novelty toy. When the toy is played with, the Dutch maiden appears to almost skate through her chores; her eyes scanning the floor for any dirt to scour away. The stick which she carries in her right hand has been used as a symbol meant to put fear into the likes of "dust and dirt" from the beginning of their ad campaign for Dutch Cleanser in 1905. This is thought to be the finest specimen of this rare toy.



**Lot 199**  
**Beach Patrol Surfer**

Scarce Male Figure  
 By Hubley Mfg. Company  
 Lancaster, Pa. - Mid 1930's  
 Pristine Original Condition  
 Estimate: \$7000 - \$9000

Hubley offered children the choice of a male or female surfing figure. These daredevils on water are positioned very realistically on their boards. They are seen cutting through a deep wake of water with simulated frothy white peaks. This is truly one of the most unique looking toys ever created in cast iron. Collectors have suggested that these toys were made as a form of advertisement for Jantzen Swimwear.



**Lot 200**  
**Penn Yan Speed Boat**

By Hubley Mfg. Company  
 Lancaster, Pa. - Mid 1930's  
 Very Good Original Condition  
 Estimate: \$9500 - \$12,500

The Penn Yan Boat Company was founded in 1921 by Charles Hermann. The company derived its name from the location of its headquarters in Penn Yan, New York. They soon gained notoriety as makers of high quality wooden powerboats, sailboats, canoes and rowboats. At first, their boats were sold mostly locally for use on the Finger Lakes. However, they attracted a much larger audience for their boats in the early 1930's when they introduced their "tunnel drive" system, giving their powerboats significantly greater speed and stability. This wonderful toy is a meticulous representation of a Penn Yan powerboat from the early 1930's, when they were at the pinnacle of their fame as boat designers. The toy is complete with all five original figures and outboard motor.



**Lot 201**  
**Monkey Riding a Tricycle**

Made by Hubley Mfg. Company  
 Lancaster, Pa. - 1935 - 6 1/2" T  
 Pristine and Very Bright  
 (Rubber Tires Replaced)  
 Estimate: \$1500 - \$2000

This Is one of Hubley's most scarce cast iron novelty toys.

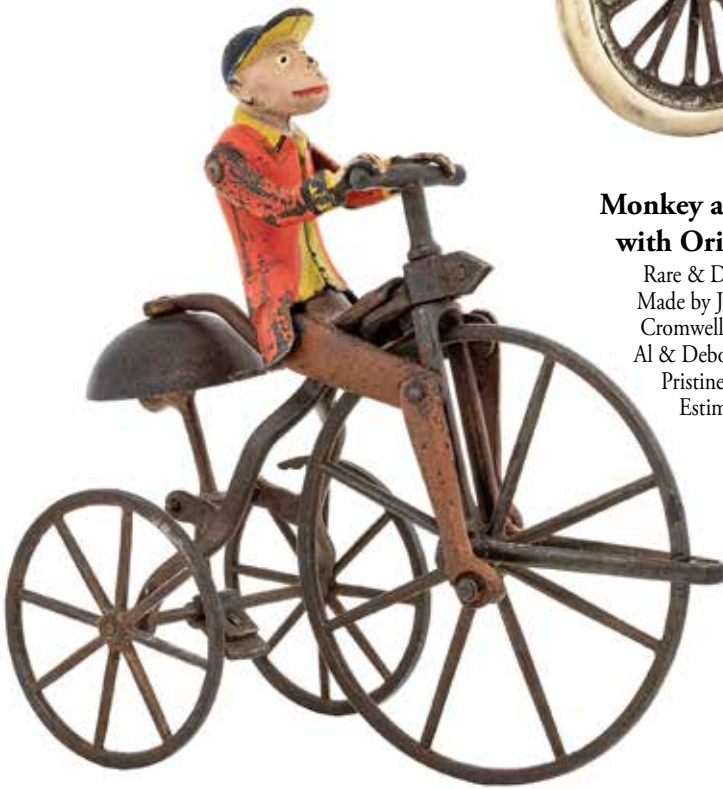


**Lot 202**  
**Monkey and Tricycle Bell Toy**  
**with Original Wooden Box**

Rare & Desirable Painted Version  
 Made by J. & E. Stevens Company  
 Cromwell, Ct. - Early 1883 - 8" T  
 Al & Deborah Davidson Collection  
 Pristine with Beautiful Patina  
 Estimate: \$5000 - \$7000



Without a doubt, this is one of the most beautiful and sympathetic images of a monkey in toy form. Dressed in his tunic and cap, the monkey's legs move up and down in a very realistic manner as the toy is pushed. Simultaneously, the bell rings to clear everyone from his path.



**Lot 203**  
**Unusual Climbing Monkeys Toy**

Made by J. & E. Stevens Company  
 Cromwell, Ct. - 1890's - 10 1/2" Tall  
 Al & Deborah Davidson Collection  
 Excellent Plus & Works Well  
 Estimate: \$3000 - \$4000

This represents one of the most fascinating large-scale cast iron toys ever produced. When the toy is played with, the viewer witnesses two small monkeys attempting to climb up the pole. Their legs bend and extend with a terrific sense of truthfulness. It is very difficult to find this dynamically kinetic toy in such great condition.





#### **Lot 204**

#### **Rare & Important Articulated Horse**

Made by the Ives, Blakeslee Company  
Bridgeport, Ct. - 1890 - 10 1/4" Long  
Near Mint - Stunning Jappanned Finish  
Estimate: \$4500 - \$5500

This is the most finely cast and detailed iron toy that we have ever encountered. Typically, Ives used these large scale horses for three beautiful horse drawn toys; their cutter sleigh, hansom cab and dog cart. However, this is a different casting altogether and was definitely not used for that purpose. Rather, like their walking monkey and donkey, this wonderful toy seems to have been made merely as a "stand-alone" piece to play with. It's absolutely wonderful to look at.



#### **Lot 205**

#### **Articulated Walking Horse On Four Wheeled Platform**

Made by the Ives, Blakeslee Company  
Bridgeport, Ct. - 1880's - 9" Long  
Pristine with Great Patina  
Estimate: \$3500 - \$4500

The designers at the Ives Company truly nailed this design. Their simple rendering of the horse is achieved with the purest sense of minimalism. This has the haunting effect of creating an object imbued with a timeless and iconic appearance. It looks as much like a 2500 year old Etruscan bronze as it does like a modernist sculpture by Marino Marini done in the 1940's.



**Lot 206**

**Mack Truck Gasoline Tanker**

Made by Arcade Manufacturing  
Freeport, IL - Late 1930's - 12 1/2" L  
Excellent Condition (Minor Dents)  
Estimate: \$750 - \$950



**Lot 207**

**John Deere Farm Thresher**

Made by Vindex Toy Company  
Division of National Sewing Machine Co.  
Belvidere, Illinois - Circa Mid 1930's  
16" Long x 12" Wide x 8 1/2" Tall  
Pristine Plus and Works Well  
Estimate: \$3000 - \$4000

The National Sewing Machine Company began producing a line of toys shortly after the end of WW1. They produced their toys under the Vindex Brand name, which also represented a line of their home sewing machines. Known in particular for their wonderful miniature farm machinery, this dynamic John Deere thresher represents the very apex of the Vindex line of toys. This is a rare chance to acquire a truly exceptional specimen.



### Lot 208 Oversized Fire Pumper

By the Wilkins Toy Company  
Keene, NH - 1895 - 20" Long  
Pristine with Great Patina  
Estimate: \$8500 - \$10,500

This is one of the truest grand-daddies of firefighting toys that was ever created for play. Three massive muscular horses are seen racing through the streets to the scene of the fire. This impressive vehicle is equipped with a steam pumper, a single hose and a pair of fire buckets. In this light, it should be regarded as a sort of hybrid "combination" piece of fire apparatus. Wilkins also produced an oversized fireman's water tower as a mate for their pumper toy. At a whopping 44", that water tower is the largest cast iron horse drawn toy ever made. However, their oversized fire pumper is fifty times more rare than the water tower toy.

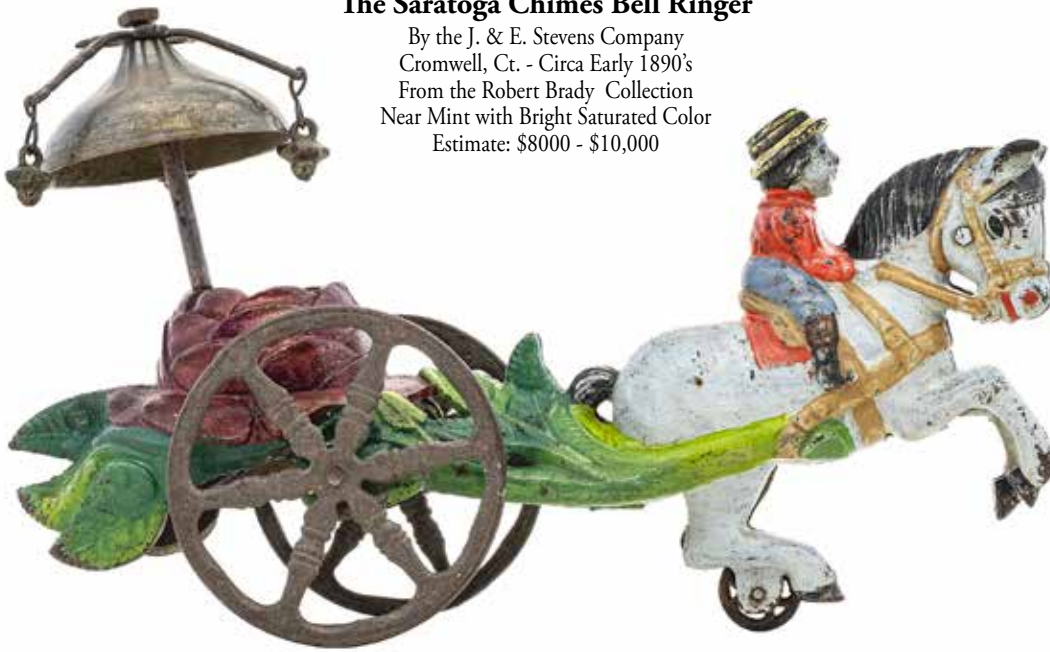




### Lot 209

#### The Saratoga Chimes Bell Ringer

By the J. & E. Stevens Company  
Cromwell, Ct. - Circa Early 1890's  
From the Robert Brady Collection  
Near Mint with Bright Saturated Color  
Estimate: \$8000 - \$10,000



This sleek and elegant bell ringer references the famous Saratoga Springs Race Course, which came into being during the Civil War, shortly after the Battle of Gettysburg. Horse racing & gambling has been celebrated in Saratoga for more than 150 years. In this comical toy, we find a young jockey seated atop his steed. Behind him, you can see he is pulling a single giant rose. Presumably, he has won the race and been awarded the rose. This is thought to be the finest known example of this exquisite colorful toy.

### Lot 210

#### Horse Drawn Dog Cart

Made by Welker & Crosby  
Brooklyn, NY - Late 1880's  
Pristine Original Condition  
Estimate: \$2250 - \$2750

People often ask why is this vehicle called a dog cart? After all, it is pulled by a horse. The answer is simple. This type of carriage was used to cart around one's dogs beneath the driver's seat, particularly as means of ferrying hunting dogs to and from the scene of the hunt. Welker and Crosby produced a small line of finely detailed toys for only a very short period of time. Their toys are hugely competed for by collectors.



### Lot 211

#### Rare Circus Menagerie Wagon

Version with Animated Action  
Made by Kyser & Rex Company  
Frankford, Pa. - Circa Mid 1880's  
Pristine Condition & Works Well  
(One rear wheel with restoration)  
Estimate: \$4500 - \$5500



Simply stated, this is one of the most colorful and dynamic horse drawn toys created at the end of the 19th century. This represents the deluxe animated version of the toy, in which the bear and kangaroo revolve as the bell chimes.

**Lot 212**  
**Surf Boat Bell Toy**

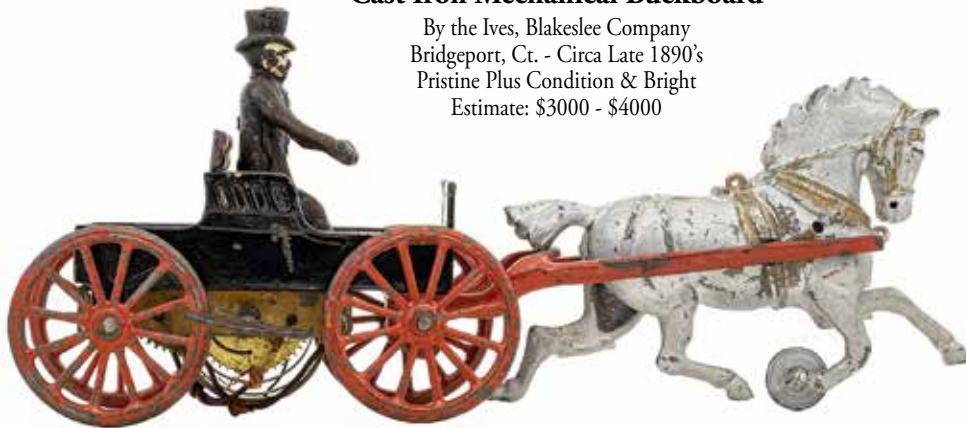
By the Gong Bell Mfg. Company  
 East Hampton, Ct. - Late 1880's  
 Aaron & Abby Schroeder Collection  
 Pristine Plus with Very Rich Color  
 Estimate: \$7500 - \$9500

Any serious-minded cast iron toy collector knows exactly how rare this exquisite bell ringer is. It is definitely one of the very most difficult to ever find for one's collection. It depicts two fishermen riding "up & down" in the choppy surf as the toy is pushed or pulled across the parlor floor. They sit on opposite sides of the rowboat in an effort to give their craft more balance and stability. The outstanding "world class" condition of this piece make it exceptionally desirable.



**Lot 213**  
**Cast Iron Mechanical Buckboard**

By the Ives, Blakeslee Company  
 Bridgeport, Ct. - Circa Late 1890's  
 Pristine Plus Condition & Bright  
 Estimate: \$3000 - \$4000



Blair Whitton's book "American Clockwork Toys" carefully details the rise of the mechanical toy industry in the state of Connecticut in the period following the Civil War. When it was discovered that steel and brass clockwork mechanisms could be obtained cheaply from clock makers such as Seth Thomas and the Waterbury Clock Company, there was a veritable explosion of new toy makers fashioning mechanical novelties for children. These companies included Stevens & Brown, Merriam Mfg., Automatic Toy Works and Ives Blakeslee, all based in Connecticut. Most of their output used light-weight materials like tin, cloth & paper-maché. On rare occasion, you can find terrific cast iron toys outfitted with clockwork drive mechanisms. This is one such occurrence and this toy is positively sublime.

**Lot 214**  
**Cossack & the Jap Bell Ringer**

By the Gong Bell Mfg. Company  
 East Hampton, Ct. - Circa 1905  
 From the Max Berry Collection  
 Near Mint and Very Luminous  
 Estimate: \$9500 - \$12,500

When the rival ambitions of imperial Russia and Japan to establish geopolitical hegemony in the region of Southern Manchuria could not be settled, a prolonged military conflict known as the Russo-Japanese War broke out as a result. This occurred in the winter of 1904. The toy design team at Gong Bell were quick to respond with this dazzling bell ringer depicting the opposing forces as dueling adversaries. This piece is perhaps the most colorful and perfect condition specimen of this rare and historically significant toy.







**Lot 215**  
**Handmade Locomotive Toy**

Wood, Iron, Brass, Tin & Nickel  
American - Made Circa 1890's  
19 1/2" Long x 7" Wide x 11" Tall  
Excellent with Great Surface  
Estimate: \$1200 - \$1500



**Lot 216**  
**Walnut Artist's Mannequin**

French - 1875 - 12 3/4" Tall  
Pristine with Strong Patina  
Estimate: \$1200 - \$1500

**Lot 217**  
**Marquetry Tilt Top Table**

American - Made Circa 1900  
7 3/4" Tall x 6 1/2" Diameter  
Pristine with Mellow Patina  
Estimate: \$750 - \$950

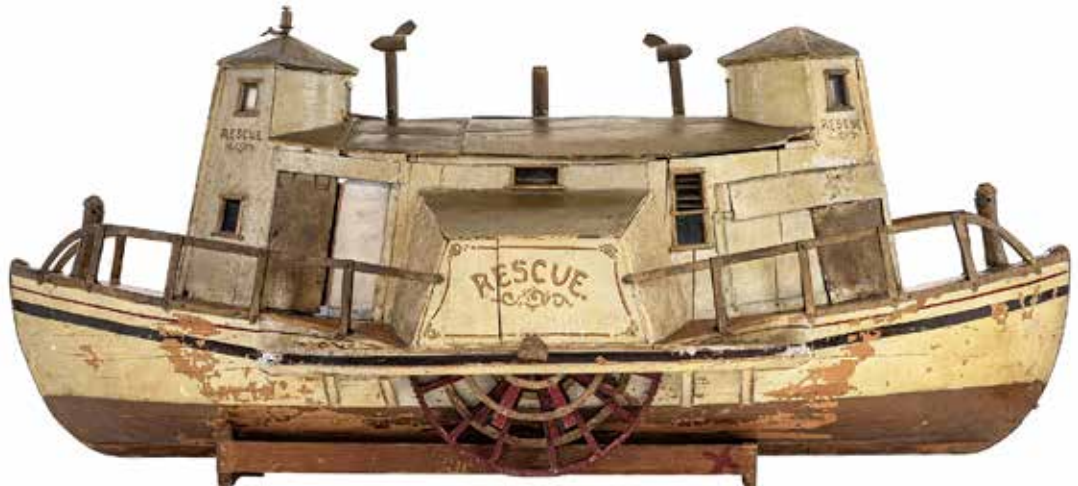
**Lot 218**  
**Early Pine Artist's Mannequin**

French - 1850's - 13 1/2" Tall  
Exceptional Carving & Surface  
Estimate: \$1500 - \$1800

**Lot 219**  
**"RESCUE" Paddlewheeler**

Rare & Unusual Boat Model  
Cape Cod - Made Circa 1880  
25" Long x 10 1/2" Deep x 11" Tall  
Excellent Original Condition  
(Needs some minor glue repair.)  
Estimate: \$1500 - \$2000

This is a truly unusual boat model. It depicts a type of rescue craft equipped with line-throwing cannons inside the two towers. Its hull profile is very wide and chunky so that it can sit low in the dangerous water and rescue sailors whose boats are breaking up near shore. I doubt you will ever see another boat model like this one.





**Lot 220  
Articulated Jigging Man**

American - 1875 - 9" T  
Furman Folk Art Collection  
Excellent Plus Patina  
Estimate: \$750 - \$950



**Lot 221  
Miniature Dalmatian Vane**

American - Circa 1910's  
12" Long x 8 1/4" Tall  
Furman Folk Art Collection  
Very Good Plus Condition  
Estimate: \$400 - \$600

Notwithstanding its reasonable estimate, this canine represents one of the sweetest and most whimsical folk art objects that we have ever sold. Given its diminutive scale, one might plausibly conjecture that this weathervane was created to top off Fido's doghouse. Great Surface.



**Lot 222  
Dog & Bone on Oval Base**

American - Carved in 1970's  
18 1/2" Long x 9 1/4" Deep  
Furman Folk Art Collection  
Pristine Plus Condition  
Estimate: \$250 - \$350



**Lot 223  
Miniature Trolley Car Model**

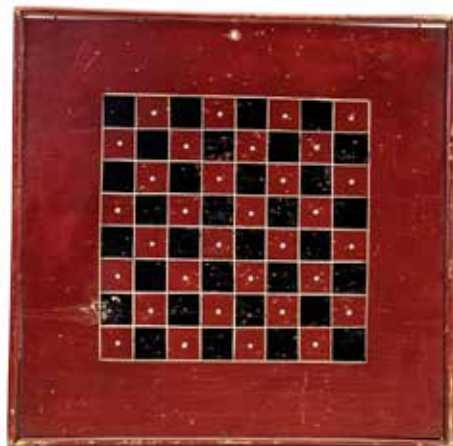
Rare WPA Visual Aid Project  
Wisconsin - Circa Mid 1930's  
11" Long x 3" Deep x 7" Tall  
Near Mint and Very Bright  
Estimate: \$550 - \$750



**Lot 224  
Unusual Painted Hourglass**

Odd Fellows Ritual Sculpture  
Made for Shamokin Lodge # 664  
Pennsylvania - Made Circa 1895  
12" Tall with a 7 1/2" Diameter  
Pristine Plus Pant & Patina  
Estimate: \$1500 - \$1800





**Lot 225**  
**Checker Board with**  
**8 x 8 Playing Squares**

Pennsylvania - 1910's  
17" Wide x 17 1/4" Tall  
Excellent Paint & Patina  
Estimate: \$550 - \$750



**Lot 226**  
**Tea Room Trade Sign**

Fabricated In Zinc & Iron  
Gloucester, Ma. - 1910  
14 1/2" Wide x 24" Tall  
Great Authentic Surface  
Estimate: \$2000 - \$2500

This is one of the most visually clever trade signs we have ever come across. With the letter "T" accommodating the letters for "Tea Room".



**Lot 225**  
**Colorful Parcheesi Board**  
**Decorated with Dots & Stars**

(Reverse of Lot #225)  
Four players compete to  
determine who can get all of  
their players to home first.



**Lot 227**  
**Graphic Parcheesi Board**  
**With Well for Game Pieces**

New York - Canada Border  
18 1/2" Wide x 31" Tall  
Pristine Painted Surface  
Estimate: \$2000 - \$2500



**Lot 228**  
**Russian Cossack Ball Toss**

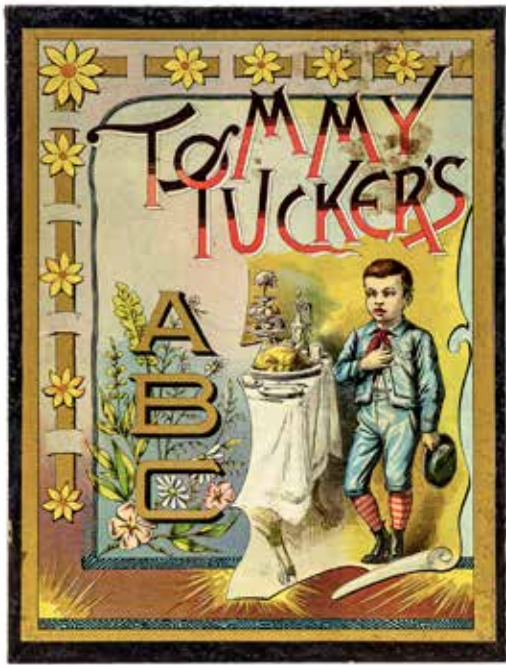
Molded Papier-mâché & Wood  
French - Made Circa 1900  
13 1/2" Wide x 26" Tall  
Very Good & Rich Colors  
Estimate: \$750 - \$950



**Lot 227**  
**Enormous Checker Board**  
**with 12 x 12 Playing Squares**

(Reverse of Lot #227)  
Checker boards with 144 playing  
squares typically indicate production  
In Canada or along the border.

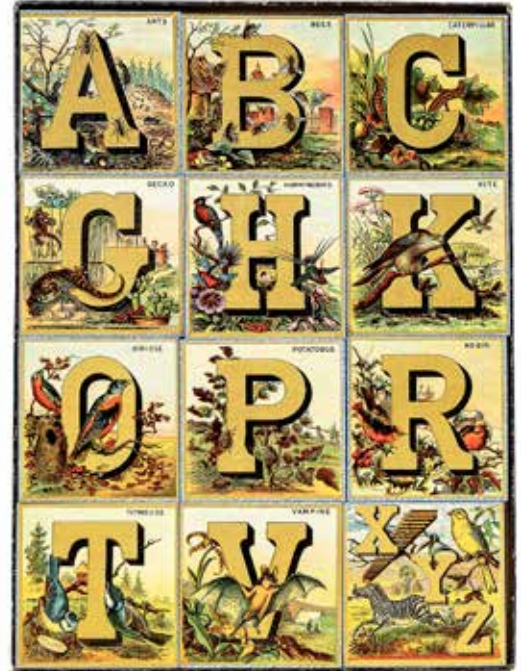




**Lot 229**  
**Tommy Tucker's ABC Blocks**

Probably McLoughlin Brothers  
 New York - Circa Early 1890's  
 13" Wide x 17" Tall in the Box  
 From Bud Newman Collection  
 Virtually Mint and Boxed  
 Estimate: \$1500 - \$2000

This is the most vividly printed set of ABC blocks we have ever seen. The box includes twelve blocks with all 26 letters of the alphabet represented on both sides. The graphic images chosen to depict each letter are unparalleled in the history of color lithography. This is very beautiful and magical instructional toy.



**Lot 230**  
**Recumbent Clown Skittle Set**

Complete with Nine Clown Pins  
 Germany - Made in the Early 1900's  
 23" Long x 9 1/2" Wide x 12" Tall  
 Pristine Condition with Rich Color  
 Estimate: \$7500 - \$9500



Elaborately molded and decorated skittle sets became the envy of every child at the turn of the nineteenth century. Often times, they took the form of animals such as dogs, cats, turkeys, frogs, camels, etc. and there were also human themed incarnations such as Native Americans, soldiers and clowns. Most frequently, the container would come with either nine or ten skittles and a pair of rolling "knock-down" balls.



**Lot 231**  
**Risqué Lady Barrel Organ Figure**

American - 1895 - 11" W x 37 1/2" T  
 Gail Furman Folk Art Collection  
 Basically Excellent Condition  
 Estimate: \$4500 - \$5500

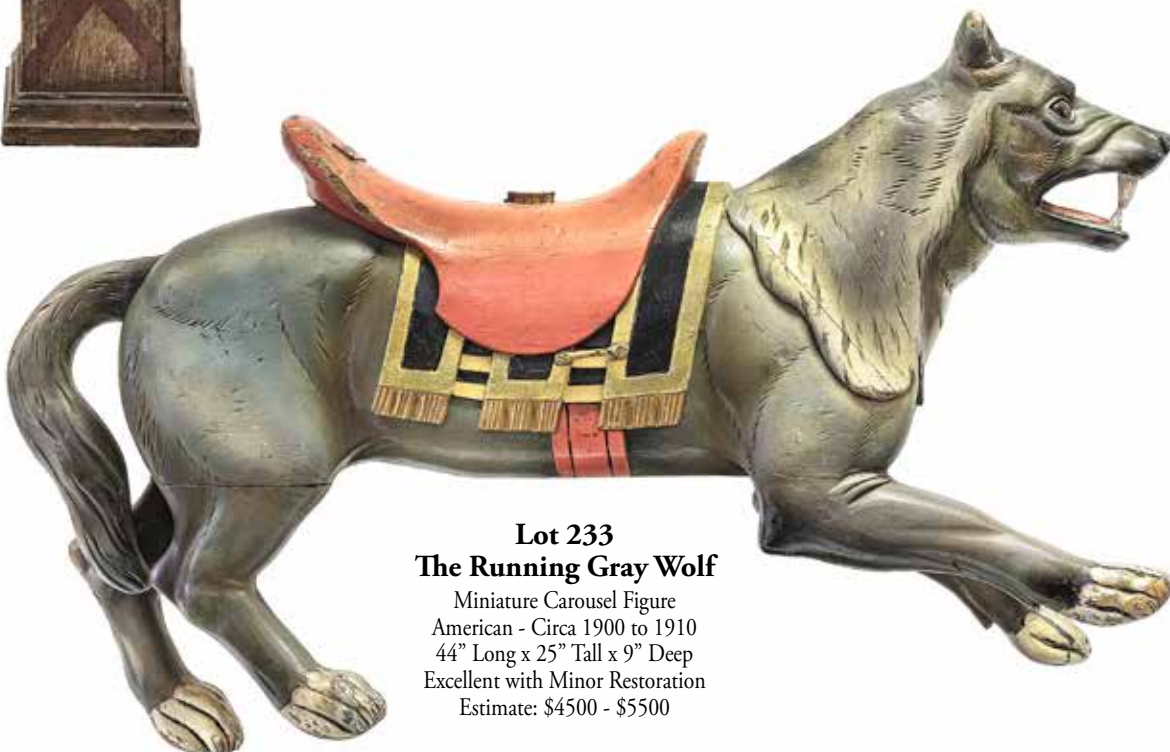


Ornamental carved figures like this pretty lady were used to decorate the niches and platforms of barrel organs. Often times, they rotated in place to add visual pleasure to the music.



**Lot 232**  
**"Bockwurst is in Season"**

Vividly Painted Trade Sign  
 Found in Central Pennsylvania  
 Circa 1900 - 18" Wide x 36" Tall  
 Excellent Condition & Patina  
 Estimate: \$1500 - \$1800



**Lot 233**  
**The Running Gray Wolf**

Miniature Carousel Figure  
 American - Circa 1900 to 1910  
 44" Long x 25" Tall x 9" Deep  
 Excellent with Minor Restoration  
 Estimate: \$4500 - \$5500



**Lot 234**  
**Boy with his Baby Rattle**

Attributed to William Matthew Prior  
East Boston - Active 1825 to 1860  
Bought from Barbara Pollack (1997)  
From the Dr. Gail Furman Collection  
Outstanding Condition with the  
Original Faux Rosewood Frame  
Estimate: \$7500 - \$9500

Prior, along with his brother-in-law Sturtevant Hamblin, are two of the most highly recognized and cherished itinerant portrait artists of their generation. Prior had a great penchant for depicting infants and children. In time, he would prove over and over again that he was extremely good at it. This rotund blue-eyed blond boy, here shown in a fancy blue frock with puff sleeves, is a sublime illustration of his very best work. Prior establishes a very frontal pose for the baby. So close, in fact, that he seems to break past the boundaries of the frame and come directly into our space. This has the haunting effect of great intimacy and grants the portrait an immeasurable amount of timelessness. Today, folk art collectors particularly value Prior's babies and toddlers when they are shown holding a rattle or some other toy or accoutrement.

**Lot 235**  
**Young Boy with Three Cherries**

Signed & Dated Lower Right: W. Eddy 1823  
Discovered in New England in the 1950's  
Frame Dimension is 21 1/4" W x 28 1/2" T  
From the Dr. Gail Furman Collection  
Very Fine State of Preservation  
Estimate: \$6000 - \$8000

The artist presents the young boy standing in the middle of a fantasy environment that is intended to be read as a stage. The rich red velvet curtain has been raised on the right so that we, as viewers, can make a close examination of this boy and draw conclusions about his probable future life. Cherries are used as a symbolic reference to the souls of men and this serious looking young man in his fancy red frock is certainly portrayed as deep thinking and soulful. The odd open wall is another theatrical device. It informs us that the portrait subject lives in a coastal town, which may further indicate the occupation of the boy's father as a ship captain or fisherman. The boy is probably only 3 or 4 years old, and yet, we are meant to infer a great deal about his status in life by the way he is illustrated to us. His age is implied by the fact that he is still shown in a dress and by the fact that he wears shoes. Very little is known about the itinerant artist Eddy, but his skill at creating a full narrative portrait is very evident.







**Lot 236**  
**Chocolate Automat Vendor**

Germany - 1920's - 5 3/4" T  
Excellent Plus Condition  
Estimate: \$500 - \$700

Imagery includes Hansel & Gretel at the Witch's cottage and children eating chocolate bars.



**Lot 237**  
**Rare Double Automat Vendor**

For Schokolade and Bonbons  
Germany - 1920's - 5 3/4" T  
Very Good Condition  
Estimate: \$950 - \$1250

Imagery includes six children playing with instruments and dolls. This unusual bank is able to dispense two different types of candy.



**Lot 238**  
**Scarce 10 Pfennig Still Bank**

Germany - 1920's - 5 3/4" T  
Near Mint and Very Bright  
Estimate: \$500 - \$700

We have never before seen this unusual variation of the chocolate vending bank.



**Lot 239**  
**The "Automatic Machine" Vendor**

Germany - 1920's - 5 5/8" Tall  
Illustrated page 256 in the Mechanical Bank Book.  
Excellent Plus Condition  
Estimate: \$600 - \$800



**Lot 240**  
**Pinball Vending Bank - Type 1**

Very Unusual Graphics of Children  
Germany - 1920's - 6 1/4" Tall  
Illustrated page 267 in the Mechanical Bank Book.  
Excellent Original Condition  
Estimate: \$1200 - \$1500



**Lot 241**  
**Teddies and Children at Play**

A Scarce Chocolates Vendor  
Germany - 1920's - 5 5/8" Tall  
Illustrated page 257 in the Mechanical Bank Book.  
Pristine Condition - Bright Litho  
Estimate: \$950 - \$1250





**Lot 242**  
**Gnomes & Insects Vending Bank**

Made for Gerlung & Rockstroh  
Chocolate Makers in Dresden  
Unknown German Manufacturer  
Circa Early 1910's - 6 3/4" Tall  
Illustrated Page 262 in the Mechanical Bank Book  
Excellent Plus Condition  
Estimate: \$800 - \$1000



**Lot 243**  
**Droste Chocolate Vending Bank**

Fantastic Whimsical Graphics  
Germany - Late 1910's - 6" Tall  
Ex - Frank Kidd Collection  
Excellent Plus Condition  
Estimate: \$600 - \$800



**Lot 244**  
**Leo Chocolat Vending Bank**

Leo Chocolat Vending Bank  
Mid 1920's - 6 1/8" Tall  
Ex - Frank Kidd Collection  
Excellent Plus Condition  
Estimate: \$600 - \$800



**Lot 245**  
**Gnomes at Work Vending Bank**

Made for Hartwig & Vogel Ltd.  
Germany - 1910's - 6 1/4" Tall  
Ex - Frank Kidd Collection  
Excellent Plus Condition  
Estimate: \$600 - \$800



**Lot 246**  
**Cailler Chocolates Vending Bank**

Unknown German Manufacturer  
Circa Late 1910's - 6 1/4" Tall  
Illustrated Page 257 in the Mechanical Bank Book  
Pristine Plus Condition  
Estimate: \$1500 - \$1800



The brightly colored graphics employed in this pretty chocolates vending bank have no equal. The various sides are decorated with images of children and their black & white puppy. The children are seen depositing money into the bank and taking the chocolate awarded to them. Chocolate bars marked Gala Peter, Cailler and Kohler can be seen throughout the imagery.





**Lot 247**  
**Stars & Clowns Vending Bank**

Made by the Stollwerck Brothers  
Cologne, Germany - Mid 1920's  
Pristine Plus Condition  
Estimate: \$550 - \$750



**Lot 248**  
**Plantation Darky Savings Bank**

By Weeden's Manufacturing  
New Bedford, Ma. - Pat.'d 1888  
Pristine Original Condition  
Estimate: \$1500 - \$2000

This is one from a trio of clockwork novelty tin banks that the Weeden Company made at the end of the 19th century. When pennies are deposited, the seated man will strum his banjo and his friend dances to the music.



**Lot 249**  
**Barcelona Chocolate Vending Bank**

Unusual Design with Strong Graphics  
Unknown Spanish Maker - 1920's  
Excellent Plus Condition  
Estimate: \$550 - \$750



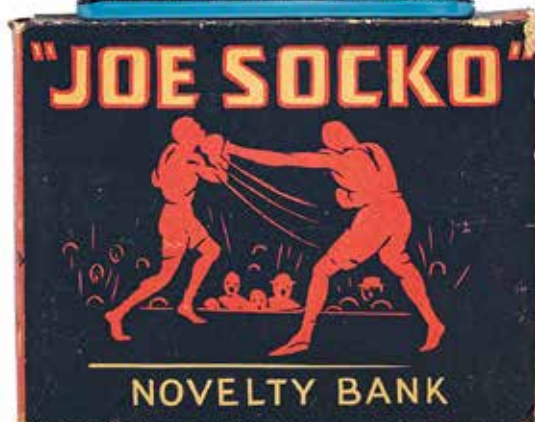
**Lot 250**  
**Popeye Knockout Bank**

By the Straits Mfg. Company  
Detroit, Michigan - Circa 1935  
The Edwin Mosler Collection  
Near Mint in the Original Box  
Estimate: \$1500 - \$2000



**Lot 251**  
**Joe Socko Novelty Bank**

By the Straits Mfg. Company  
Detroit, Michigan - Circa 1937  
The Edwin Mosler Collection  
Near Mint in the Original Box  
Estimate: \$750 - \$950







**Lot 252**  
**The Seated Rooster Bank**

Attributed to Gebruder Bing  
Nuremberg - Early 1900's  
Ex - Ed Mosler Collection  
Very Good Plus Condition  
Estimate: \$1500 - \$1800

This is a very well molded and beautifully painted toy bank. It bears many similarities with the design methods used by Bing for their Nodding Shepherd Bank. Coins deposited through the slot in the rooster's tail feathers cause one misplaced sickle feather to flutter.



**Lot 253**  
**The Mandarin Tea Drinker**

Maienthau & Wolf  
Germany - Circa Late 1900's  
Illustrated Page 169 in the Mechanical Bank Book  
Very Good Plus Condition  
Estimate: \$3500 - \$4500



Maienthau made an equally small mate to the tea drinker known as the Darky Bust Bank. The man's braided queue rises up when coins are deposited. Fewer than five are known to exist.

**Lot 254**  
**Tin Punch & Judy Bank**

Made by Burnett Ltd.  
London - Mid 1920's  
Pristine & Very Bright  
Estimate: \$3000 - \$4000

Deposited coins cause the images in the window to advance revealing various familiar characters from the Punch and Judy troupe.



**Lot 255**  
**Snake and Frog in Pond**

By Carl Quehl Company  
Germany - Late 1910's  
Frank Kidd Collection  
Near Mint & Very Bright  
Estimate: \$5000 - \$7000



The snake and the frog represent an age old predator/prey relationship in nature. This bank, which is magnificently lithographed, presents the renowned adversarial pair on opposite sides of the pond. Who flinches first often determines whether the snake will capture his prey or whether the frog will elude his predator. In this rare instance, the snake and frog collaborate to help you deposit your coins into the bank. This is one of the rarest and most important of the European tin toys banks. Exquisite quality here.





**Lot 256**  
**Cigarette Vending Bank**

Unknown French Maker  
Circa Mid 1920's - 6" Tall  
Mint with Bright Graphics  
Estimate: \$950 - \$1250



**Lot 257**  
**The Clown Money Bank**

England - Circa Late 1920's  
Illustrated page 68 in the Mechanical Bank Book.  
Near Mint with the Original Box  
Estimate: \$3000 - \$4000

The weight of large English copper pennies causes the clown to somersault your money into the bank when the lever is pressed.



**Lot 258**  
**Swiss Musical Saving Bank**

Medallion of Bacchus, Goblet & Grapes  
Designed by Mme. Alice Reugue Ste-Croix  
Switzerland - Pat'd March 1923 - 6" Tall  
Excellent Plus and Works Well  
Estimate: \$1500 - \$2000



**Lot 259**  
**Thrifty Tom's Jigger Bank**

Made by Ferdinand Strauss Corp.  
New York City - Circa Early 1920's  
Pristine Condition and Works Well  
Estimate: \$800 - \$1000



**Lot 260**  
**Railway Ticket Dispenser Bank**

With Silhouette of a Locomotive  
Made by Gebruder Marklin & Cie.  
Coppingen, Germany - Early 1920's  
Mint Shop Stock in the Original Box  
Estimate: \$1500 - \$2500



**Lot 261**  
**Dapper Dan Jigger Bank**

Made by the Louis Marx Company  
New York City - Pat'd April 7, 1925  
Pristine Condition and Works Well  
Estimate: \$800 - \$1000





**Lot 262**  
**The Winner Savings Bank**

Made by Berger & Medau, Mfrs.  
 New York City - Pat'd April 23, 1895  
 From the Edwin Mosler Collection  
 Excellent Strong Lithography & Works  
 Estimate: \$9500 - \$12,500

By the mid 1890's, upper class America had become enraptured with equestrian pursuits. Horse races, in particular, were seen as world class sporting events. The Winner Savings Bank attempts to capture the thrilling excitement of placing a wager on a horse at the track. When pennies are forcibly pushed into the bank with the use of the cast iron activating stick, watch the six horses circle the track beneath the glass window. The one who finishes nearest to the gold finish post is declared the winner. The case of the bank is appealingly decorated with horseshoes, riding crops and busts of victorious horses. Here is another rare occurrence when a company created and manufactured a single toy bank design and never another one.



**Lot 263**  
**Toad in Den Bank**

Made by James Fallows Company  
 Philadelphia - Patented Aug. 29, 1871  
 From the Edwin Mosler Collection  
 Illustrated on Page 245 of the book.  
 Excellent All Original Condition  
 Estimate: \$6000 - \$8000

This represents an extremely early and rare American tin mechanical bank. Along with the Alligator in Trough and the Frog on Arched Track, they form a trio of very scarce and desirable banks made in tin by the James Fallows Company of Philadelphia.





**Lot 264**  
**Spanish Jolly "N" Bank**

Unknown Manufacturer  
Produced Circa 1930's  
Illustrated Page 147 in the Mechanical Bank Book  
Near Mint and Very Bright  
Estimate: \$950 - \$1250

On the reverse of the bank, we find three capitalized letters "GLA", which may signify the initials of the maker. There is also a small hole marked "Billetes" for deposit of paper currency.

**Lot 265**  
**Jolly "N" - Straight Letters**

Made by Chamberlain & Hill  
Great Britain - Circa Late 1920's  
Illustrated Page 152 in the Mechanical Bank Book  
Pristine Plus Condition  
Estimate: \$1500 - \$1800

This bank uses an entirely different open hand that can accommodate large British copper pennies.  
Outstanding Condition.



**Lot 266**  
**The "BAMBOULA" Bank**

Unknown French Maker  
Produced in Early 1900's  
Exceptional Pristine Condition  
Probably Finest Known Example  
Estimate: \$2500 - \$3500

This scarce & desirable French toy bank uses the most complex baseplate and trap ever devised for a coin swallower.

**Lot 267**  
**Jolly "N" with High Hat**

By John Harper & Company Ltd.  
Willenhall, England - Late 1920's  
Illustrated Page 137 in the Mechanical Bank Book  
Absolutely Mint Condition  
Estimate: \$1500 - \$1800

This represents an extremely scarce variation of Harper's typical coin swallower with significantly taller high hat. The superior quality of this unusual bank is "off the charts".





**Lot 268**  
**Green Jacket Jolly Sambo Bank**  
**with Unusual Brown Derby Hat**

Unknown English Manufacturer  
 Excellent Plus Condition  
 Estimate: \$2500 - \$3500

The following three lots represent scarce examples of black-themed coin swallowers. For many years, they were featured proudly on the shelves of pioneer collector Andrew Emerine in Fostoria, Ohio. In the 1930's Emerine created these lead hats purely for his own delight and amusement. In its own right, the Jolly Sambo Bank is an extremely rare and special piece. But, in coupling it with his hand-crafted lead derby hat, Emerine has created a most unique toy bank. All three of these banks were acquired by Ed Mosler in the late 1950's. This offering provides modern day collectors with a rare chance to acquire a true piece of mechanical bank lore and legend.



**Lot 269**  
**Rare Funny Tom Bank**  
**Seen Wearing a Top Hat**

Unknown American Maker  
 Original Emerine Label in the Hat  
 Pristine Plus Condition  
 Estimate: \$3000 - \$4000



**Lot 270**  
**Red Jacket Jolly "N" Bank**  
**with Stovepipe Top Hat**

By J. & E. Stevens Company  
 Cromwell, Ct. - Circa 1890's  
 Pristine Plus Condition  
 Estimate: \$2500 - \$3500

Emerine's home-made hat fantasies turned his collection of black themed bust banks into very attractive and desirable variations. In the Kidd Collection in Oregon, there is an example of a Dinah Bank with a dazzling broad-brimmed hat by Emerine.







**Lot 271**  
**Austrian Jolly Bank**

Rare Orange Jacket  
Made in the 1930's  
Frank Kidd Collection  
Pristine Plus Condition  
Estimate: \$750 - \$950



**Lot 272**  
**Little Moe Bank**

Powder Blue Jacket  
By Chamberlain & Hill Ltd.  
Great Britain - Pre WW2  
Near Mint & Fully Saturated  
Estimate: \$2250 - \$2750



**Lot 273**  
**Jolly Bank on Stepped Base**

Unknown European Maker  
Made Circa 1910 - 9 1/4" Tall  
Illustrated Page 142 in the Mechanical Bank Book  
Ex - Frank Kidd Collection  
Very Good Original Condition  
Estimate: \$1500 - \$1800



**Lot 274**  
**Austrian Jolly Bank Presented**

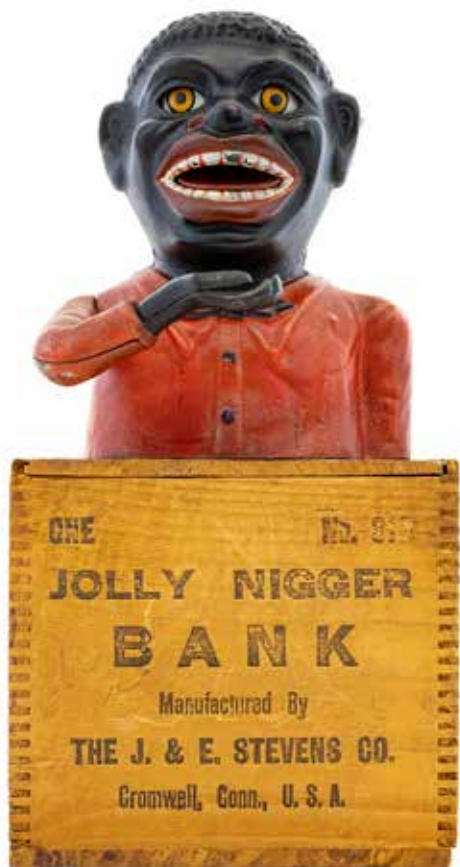
On an Elongated Oval Base  
Made in the Mid 1930's  
Excellent Plus Condition  
Estimate: \$950 - \$1250



**Lot 275**  
**Mammy and Child Bank**

Red Dress - Yellow Bandana  
Made by Kyser & Rex Company  
Frankford, Pa. - Circa Mid 1880's  
Richard Goldstein Collection  
Illustrated P. 168 Morphy Book  
Mint Condition & Very Bright  
Estimate: \$25,000 - \$35,000

The Mammy and Child Bank is one of the most graphically appealing banks ever created. Kyser & Rex has presented us with a mother feeding her infant child. Ordinarily, based on this thematic content, I might wrongly conclude that the design for this project would be sensitive and subtle. But there is absolutely nothing subtle in this representation of mother and child. To the contrary, the visual conception is extremely frontal and powerful. Additionally, the heavy use of primary colors acts to reinforce the dynamism already established by the mother's ample sturdy frame. The Mammy and Child Bank is one of my all-time favorite banks precisely because of this straightforward minimalist design vision. I am definitely not alone in this assessment. This bank would appear on the "top favorites" list of virtually every collector in the field. Because of its extremely sublime quality, this bank was selected for inclusion in the Morphy book on banks.



**Lot 276**  
**Jolly "N" Coin Swallower**

By J. & E. Stevens Company  
Cromwell, Ct. - Circa 1897  
Mint with Original Wood Box  
Estimate: \$12,000 - \$15,000



Over a period that spanned nearly a decade, Shepard Hardware's coin swallowing Jolly Bank had been a significant hit that generated huge profits for the company. However, In 1892, at the height of their business success, Shepard Hardware experienced a terrible reversal that forced them to close their doors permanently. About five years later, J. & E. Stevens purchased the rights to the Jolly Bank (along with the Speaking Dog & Artillery banks) changing the baseplate to accommodate their circular twist trap. It proved to be a very popular product for Stevens as well. This is a positively sensational specimen of the bank.



**Lot 277**  
**Bronze Pattern for the**

Cat and Mouse Bank  
 J. & E. Stevens Company  
 Cromwell, Ct. - Mid 1890's  
 Ex - Perelman Toy Museum  
 Pristine Plus Condition  
 Estimate: \$7500 - \$9500



Leon Perelman bought a large collection of lead and bronze patterns for mechanical banks from Louis Hertz and Mark Haber in the early 1960's. They had gotten them directly from management at the Stevens Company just after WW2. This gleaming Cat & Mouse pattern is one of the most beautiful from that group.

**Lot 278**  
**Cast Iron Pistol Bank**

By the Richard Elliott Company  
 Chicago, Illinois - Circa 1910's  
 Mint Condition with the Box  
 Estimate: \$2000 - \$2500

The Pistol Bank works with dimes only. Place a dime in the vertical slot found in the end of the pistol's shaft. When the trigger is pulled, the coin is grabbed by an internal hook and deposited. The bank resets itself for use when the trigger is released.





### Lot 279

#### Afghanistan Bank

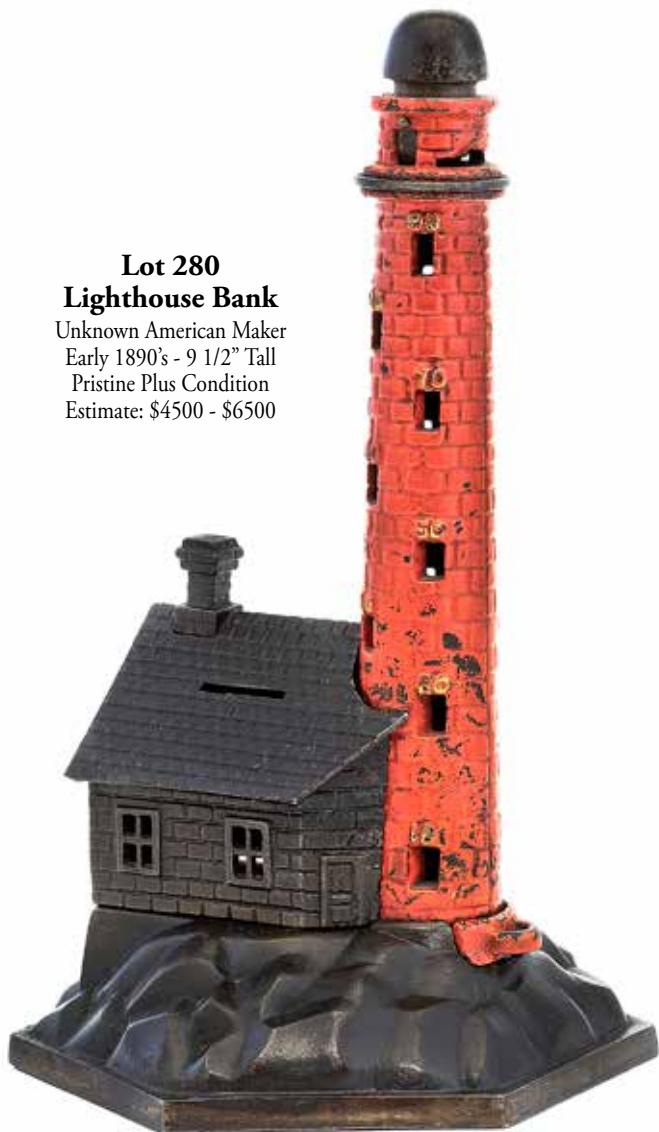
By Mechanical Novelty Works  
New Britain, Ct. - Mid 1880's  
Pristine Plus Condition  
Estimate: \$9500 - \$12,500

Geopolitical control of the strategic land owned by Afghanistan has been fought over for centuries. In this terrific tiny bank, we discover Russia (Bear) confronting Great Britain (Lion) at the gate of "HERAT", a major trading center on Afghanistan's western border. This is a highly superior A+ example of the bank.

### Lot 280

#### Lighthouse Bank

Unknown American Maker  
Early 1890's - 9 1/2" Tall  
Pristine Plus Condition  
Estimate: \$4500 - \$6500



The Lighthouse Bank can save coins in two ways; as a still bank through the slot in the roof of the keeper's cottage and as a recording bank for nickels only in the red tower.



### Lot 281

#### The Mosque Bank

Made by the H. L. Judd Company  
Wallingford, Ct. - Circa Mid 1880's  
From the Edwin Mosler Collection  
MINT - Extraordinary Green Wash  
One of the Finest Known Examples  
Estimate: \$7500 - \$9500

The Mosque Bank draws its inspiration from Victor Hugo's tragic story of Quasimodo living in the bell tower of Notre Dame in Paris. However, here the misanthropic hunchback is portrayed as a primate rather than as a misshapen man. Place pennies squarely on the tray he holds above his head and he will caper into the church dome to make your deposits when the crank is turned. Esmerelda can be seen clutching a wreath on the rooftop. With its dark brown japanned finish and the profusion of green wash highlighting, there is no doubt that this represents one of the most beautiful specimens of the Mosque Bank in the world.



**Lot 282**  
**Buffalo with Twist Tail**

Unknown American Maker  
 Produced Circa 1930's  
 Excellent Plus Condition  
 Estimate: \$1500 - \$2000

This hairy buffalo is a terrific western themed bank. Taking it apart to retrieve your deposited coins and reassembling it are true feats of engineering know how.



**Lot 283**  
**Pelican Bank - Man Thumbs Nose**

Designed by John Gerard - Trenton, NJ  
 Made by the J. & E. Stevens Company  
 Cromwell, Ct. - Pat.'d Oct. 15, 1878  
 Near Mint - Fantastic Japanned Surface  
 Estimate: \$4500 - \$5500

The Pelican Bank is one of the most finely cast and detailed toy banks ever made. The beaky bird stands upon a circular base that is strewn with seashells and fish. He has his choice of seafood, but his appetite runs more towards the exotic. In fact, when pennies are squeezed through the slot in his head, his beak opens revealing the head of a man thumbing his nose at you. This represents an absolutely sublime example of the Pelican Bank, complete with seldom seen red eyes and gold highlighting throughout.



**Lot 284**  
**The Guessing Bank - Male Figure**

Design by Edward McLoughlin - NYC  
 Unknown Maker - Pat.'d May 22, 1877  
 Pristine Plus Condition & Works Well  
 Estimate: \$5500 - \$7500

In reality, this unusual money bank is more of an adult gambling device than it is a child's plaything. It has been suggested that the Guessing Bank was used as a bar room novelty to amuse the patrons. The bank promises to pay successful players "five to one" if they call the number. As the odds are actually six to one, the house is presumably ahead by 16 2/3% at all times.





**Lot 285**  
**Owl Turns Head Bank**

Rare Snow White Owl  
By J. & E. Stevens Company  
Cromwell, Ct. - Mid 1880's  
Near Mint & Very Luminous  
Estimate: \$9500 - \$12,500

This stunning quality example of the elusive white Owl Turns Head Bank is a genuine delight to look upon. As an esoteric color variation, this piece has become a veritable Holy Grail for bank collectors; simply put, a piece to search out and acquire. Please note that the white owl version should feature a pair of pale yellow glass eyes as this one does.



**Lot 286**  
**Bear Hugs Tree Stump**

Rare Ebony Japanned Finish  
By H. L. Judd Mfg. Company  
Wallingford, Ct. - Early 1880's  
Near Mint with Painted Eyes  
Estimate: \$1500 - \$1800



**Lot 287**  
**Standing Bull Dog Bank**

Rare Ebony Japanned Finish  
By H. L. Judd Mfg. Company  
Wallingford, Ct. - Circa 1887  
Near Mint with Painted Eyes  
Estimate: \$1750 - \$2250





**Lot 288**  
**Ten Cent Adding Bank**

Designed by Isaac Pforzheimer  
American Maker - Patented 1889  
Ex - Michael Nemeth Collection  
Near Mint with Great Flourishes  
One of the Finest Known  
Estimate: \$3500 - \$4500



**Lot 289**  
**Elephant with Three Stars**

Unknown American Maker  
Produced & Sold Mid 1880's  
Stunning Mint Condition  
Estimate: \$3500 - \$4500

P. T. Barnum purchased an enormous elephant from the Royal Zoological Society in London in the early 1880's. Daily updates in the press about Jumbo's journey across the Atlantic caused armies of children to wait for his arrival with great enthusiasm. Manufacturers, eager to satisfy the insatiable demand for elephant toys, created many images of the prestigious pachyderm.



**Lot 290**  
**Tank and Cannon Bank**

Made by the Starkie's Company  
Great Britain - Pat'd May 4, 1920  
From the Edwin Moser Collection  
Near Mint and Very Rich Color  
Estimate: \$2500 - \$3500

The Tank & Cannon bank was brought to market at the end of World War 1. The British, delighted with their victorious outcome against the Germans, enjoyed a sense of rediscovered nationalism that even trickled over into the world of toy design. In this heavy cast iron plaything, we find an image of a British Mark 1 tank crossing the battlefield. This vast contraption of war was 32'6" long with its steering tail engaged. Large English copper pennies can be catapulted from the cannon into the slot in the tank.



**Lot 291**  
**Bird on Church Roof Bank**

Made by J. & E. Stevens Company  
Cromwell, Ct. - Pat'd 1878 - 6 1/2"  
Provenance: Ed Mosler Collection  
Frank Kidd Collection  
Near Mint - Exceptional Highlights  
Estimate: \$6000 - \$8000

Start by placing your coin in the crest feathers of the bird. When the wire lever found beneath his tail feathers is lightly pressed in, the bird leans forward to drop the penny into the church chimney. The arresting visual minimalism of this bank's design gives it an authentic folk art silhouette. A spectacular specimen.



**Lot 292**  
**Japanned Dog on Turntable Bank**

With an Outstanding Green Wash  
By H. L. Judd Mfg. Company  
Wallingford, Ct. - Mid 1880's  
Mint Condition and Luminous  
Possibly the Finest Known  
Estimate: \$4000 - \$5000

As absurd as it may sound, collectors could build a terrific collection around the acquisition of just such a bank. After all, it's only a Dog on Turntable bank, not a colorful Calamity Bank or a complex Confectionery Bank. I think this bank, as well as any other object included in this auction, points to the true meaning when we use the expression "crème de la crème". Simply stated, it represents the very best.





**Lot 293**  
**"Up To Date" Recording Bank**

Unknown American Manufacturer  
 1890's - 8" Tall with Chimney Down  
 From the Perelman Toy Museum  
 Pristine Condition - Mellow Patina  
 Estimate: \$2500 - \$3500



With its simple straight lines, minimal silhouette and printed architectural details, the "Up To Date" bank is visually very appealing. The bank was made for use with nickels only. When coins are deposited, the chimney will rise, registering each nickel as it is deposited. This unusual and rare bank might be the precursor of the Lighthouse Bank, which also uses nickels only for deposit.



**Lot 294**  
**Sentry Emerges from Guardhouse**

Assigned Provisional Patent 15103/52  
 English - Late 1930's - 9 1/4" Tall  
 From the Perelman Toy Museum  
 Outstanding State of Preservation  
 Estimate: \$2500 - \$3500

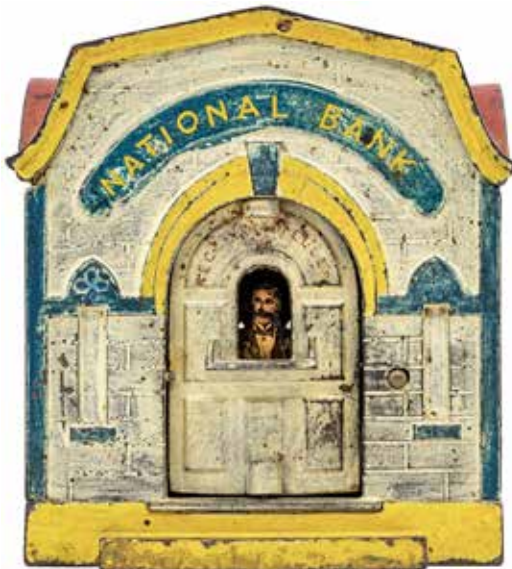


This is exactly the type of "one-off" unique toy bank that would have sent Leon Perelman into the outer stratosphere with excitement. The bank was assigned a provisional patent, but it may never have been made. This facsimile patent model is made of wood, cardboard, paper and tin. To operate the bank, push the soldier into his sentry box until he clicks into place. Coins deposited into the slot in the roof cause guard to pop out at attention. Here's a chance to own something truly rare.

**Lot 295**  
**The Baby Elephant**  
**Unlocks at X O'Clock**  
 Manufactured by Charles Bailey  
 Cobalt, Connecticut - Early 1880's  
 From Perelman Museum Collection  
 Pristine Condition with Lovely Patina  
 Estimate: \$22,500 - \$27,500



Before he went to work for the Stevens Company, Charles Bailey produced a small group of meticulously detailed toy banks in lead. This miniature wonder is the smallest of his creations. The long panel of the bank features an elephant dangling a boy above the snapping jaws of an alligator with razor sharp teeth. A cartoon bubble emanates from his mouth, encapsulating these words, "Oh if I had only put some money in the bank". Then presumably he wouldn't find himself in this dangerous predicament. When the clock hands are turned to 10 o'clock, the elephant rears backwards. He's holding the boy with his front legs. This action also exposes the coin slot for deposits. This particular example of the Baby Elephant bank is an extremely scarce color variant comprised of gold-stained walls and a red base. It was once a featured part of Leon Perelman's museum collection.



**Lot 296**  
**National Bank - Stenciled Letters**  
 Made by the J. & E. Stevens Company  
 Cromwell, Ct. - Pat'd August 5, 1873  
 Pristine Condition - Great Paper Figure  
 Estimate: \$15,000 - \$18,000

The National Bank is one of the rarest and most colorful building banks ever produced. Pressing the activating button allows you to push the door in. Suddenly, a paper-covered tin teller appears in the door window with a tray for your deposits. Oddly, the Stevens Company presented this bank with both raised letters or stenciled flat letters for the architrave above the door. This represents a highly superior example of the National Bank.



**Lot 297**  
**Artillery Bank - Confederate Officer**

Rare Variant with White Fort Tower  
 By the J. & E. Stevens Company  
 Cromwell, Ct. - Circa Mid 1890's  
 Pristine Condition - Great Surface  
 Estimate: \$9500 - \$12,500

Upon its release, Stevens' polychrome version of the Artillery Bank found an immediate audience with children. The action of the bank is absolutely exhilarating. Pull the cannon hammer down and place a coin inside the cannon. This causes the soldier's arm to go up. When the lever is pressed, watch as the coin sails through the air for deposit into the fort's tower. Meanwhile, the officer's arm goes down, as if he has given the command to fire. J. & E. Stevens offered the Artillery Bank with either a Union or Confederate Soldier, which was rather extraordinary, considering the Civil War had taken place nearly three decades before its production.

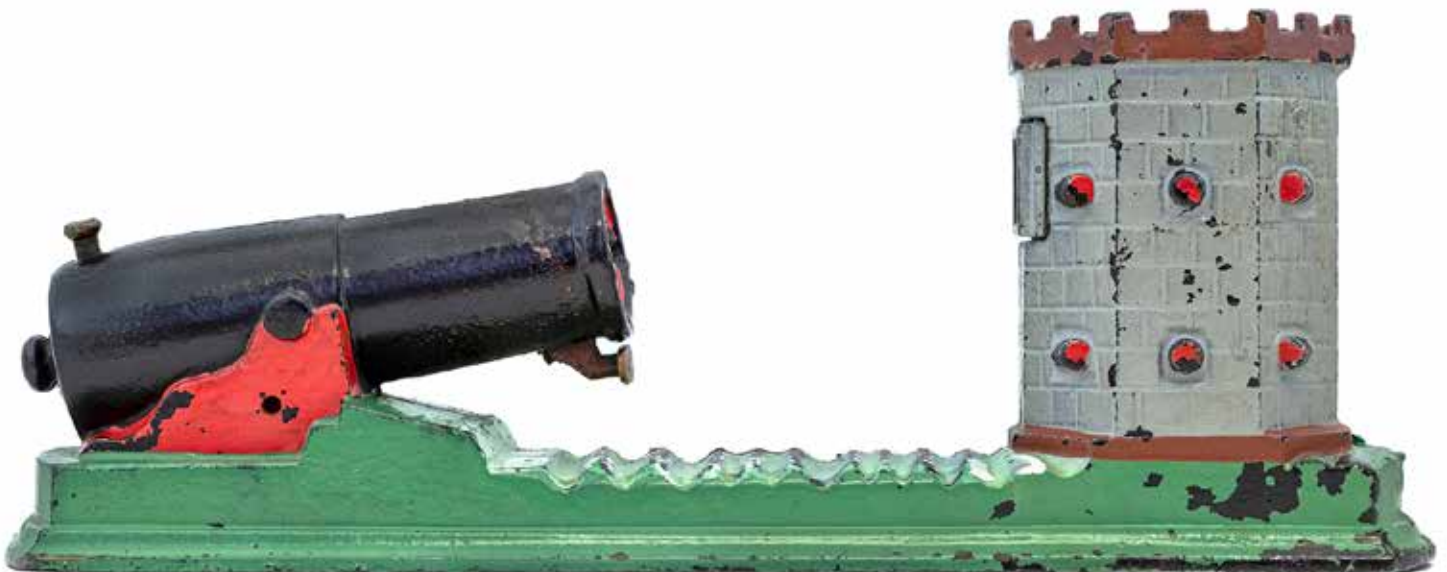


**Lot 298**  
**The Octagonal Fort Bank**

Unknown American Manufacturer  
 Marketed in the Late 1870's  
 From the Ed Mosler Collection  
 Illustrated in multiple books.  
 Near Mint with Superb Patina  
 Very Probably the Finest Known  
 Estimate: \$20,000 - \$25,000

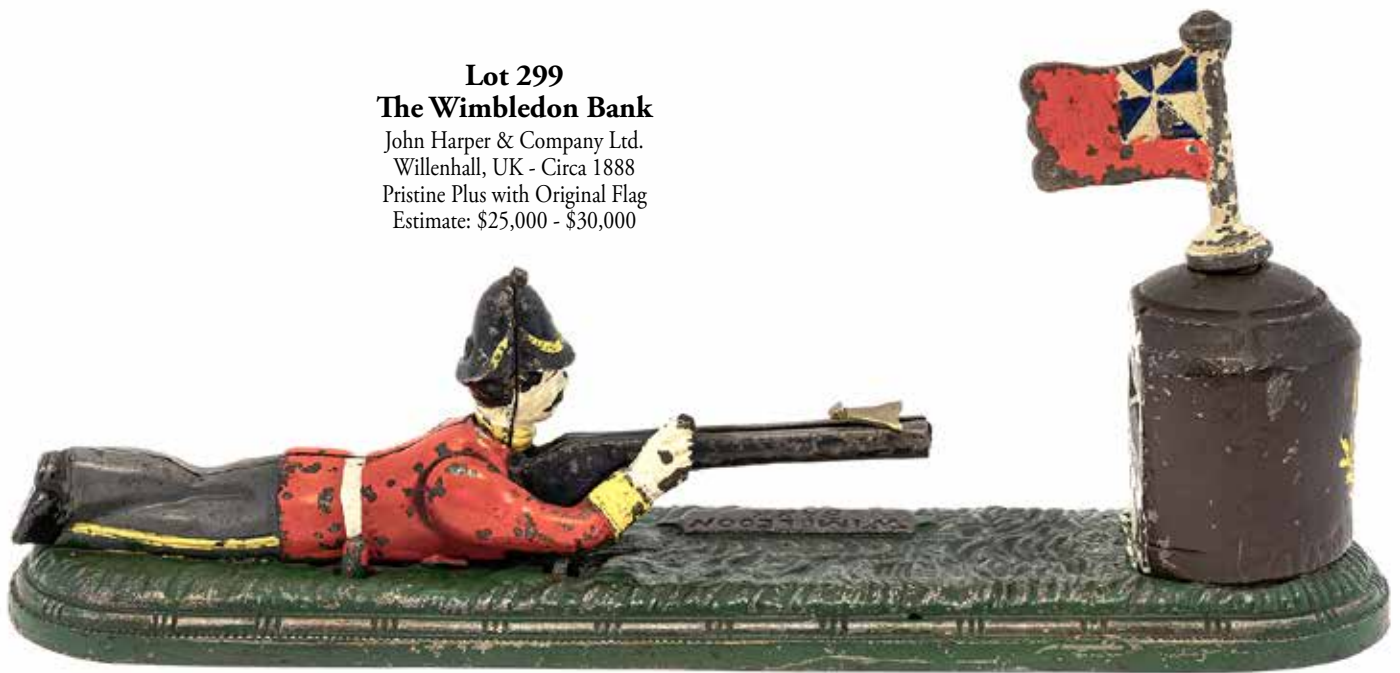


Like both of the "Hold the Fort" banks, the Octagonal Fort Bank historically references the bombardment of Fort Sumter, a United States Army outpost near Charleston, South Carolina. The siege of the fort commenced early in the morning of April 12, 1861 and lasted only 34 hours before the fort was evacuated. There were no deaths on either side, nevertheless, the battle is usually regarded as the first battle of the American Civil War. This is a truly spectacular specimen of this rare & important bank.



**Lot 299**  
**The Wimbledon Bank**

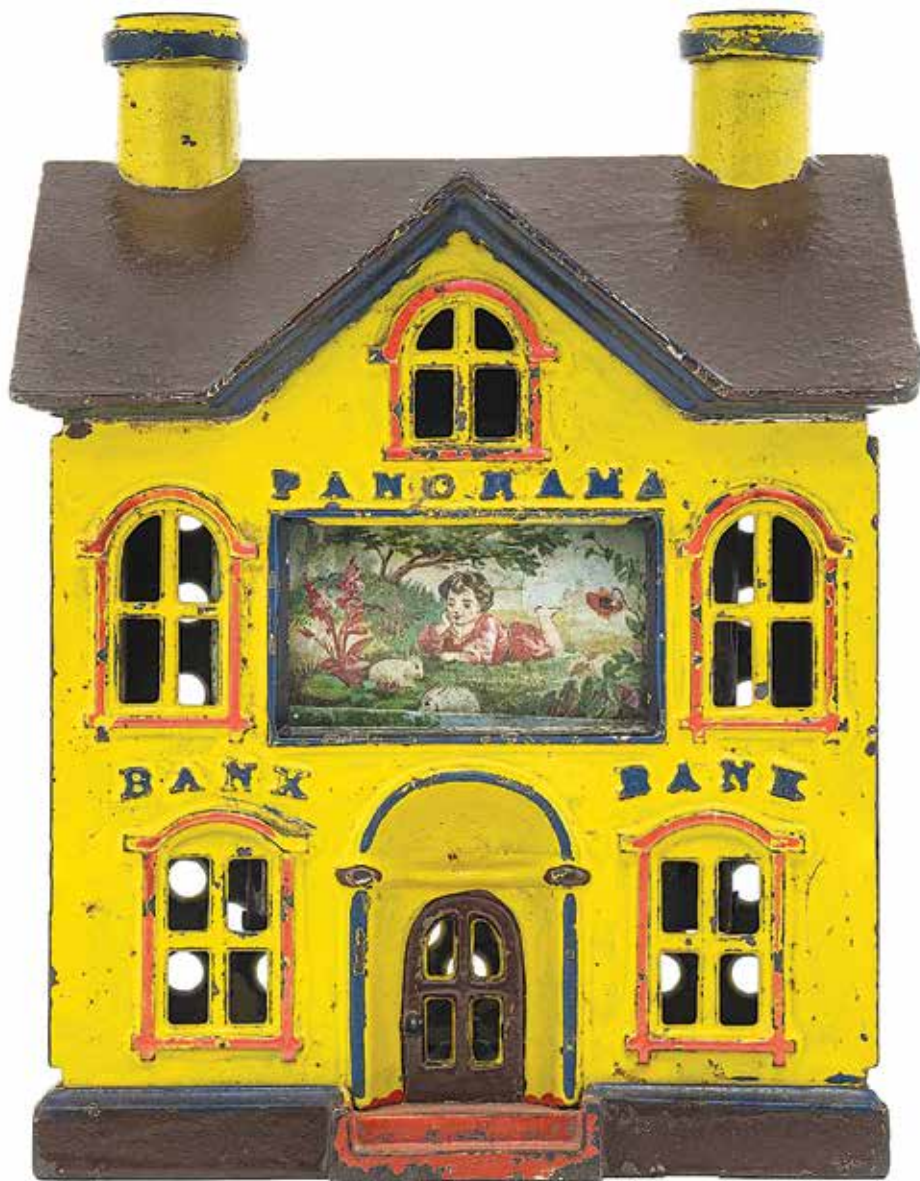
John Harper & Company Ltd.  
 Willenhall, UK - Circa 1888  
 Pristine Plus with Original Flag  
 Estimate: \$25,000 - \$30,000



The National Rifle Association of Great Britain was founded in 1860. The organization encouraged rifle shooting throughout Great Britain. In the summer of 1866, they initiated the Wimbledon Cup Prize. A great majority of the entrants to this competition were military men. These competitors were known as "Volunteers". Queen Victoria herself was often in attendance at the Wimbledon Cup. Princess Louise presented the trophy to American marksmen attending the competition in 1875. This example of the Wimbledon Bank was recently discovered in the attic of a house in Northern England. Positively outstanding quality.







**Lot 300**  
**The Panorama Bank**

Finished Yellow, Brown, Red & Blue  
 Made by J. & E. Stevens Company  
 Cromwell, Ct. - Circa 1880 - 7" Tall  
 From the Edwin Mosler Collection  
 Near Mint Condition and Bright  
 Estimate: \$25,000 - \$35,000

The Panorama Bank is one of the most beautiful of all the architectural-themed mechanical toy banks. With its dramatically angled roofline, its recessed apse doorway, and its elaborate Victorian window work, not to mention its two pronounced stovepipe chimneys, it makes for an extremely handsome looking structure. The action of the Panorama Bank is also very charming and compelling. We find a rectangular glass-enclosed window in the center of the building's facade. This glass protects an internally set paper reel that illustrates five different landscape & children vignettes. When coins are deposited through the slot in the roof, the reel advances, changing the images like a viewfinder. This represents a positively exceptional example of this bank.

**Lot 301**  
**The Old Woman in the Shoe**

Made by the W. S. Reed Company  
 Leominster, Ma. - Pat. 'd 11-27-1883  
 From Gertrude & Covert Hegarty  
 From the Al Davidson Collection  
 From Richard Goldstein Collection  
 See Descriptive Text for Condition  
 Estimate: \$25,000 - \$35,000



The Old Woman in the Shoe Bank is perhaps the most sought after bank in the history of the hobby. An authentic specimen with period paint carries a book valuation above \$500,000. But this is basically a moot point since few examples ever came to light and passed into the hands of collectors. In fact, only a single horde of these rare toy banks ever turned up and they were discovered decades ago by Covert Hegarty and F. H. Griffith. At the time they were unearthed, there were two relatively complete specimens with old period paint and there was a collection of loose unpainted parts. Both Hegarty and Griffith kept one good example for themselves. The Hegarty example came on the market in 1988 and subsequently traded hands three times over the next 25 years.

It is currently in a major collection. The Griffith specimen has been in a collection for nearly forty years. I cannot comment about it because I have never seen it. After Covert Hegarty died in 1968, his widow Gertrude had the unpainted loose parts for the Old Woman in the Shoe bank assembled by a local ironworker. Remember, these parts had been discovered years before along with the two mostly complete specimens with old period paint. Gertrude painted them herself and passed them on to collector friends Al Davidson and Steve Steckbeck. The current bank for auction is the Davidson example that Gertrude traded to him in the 1970's. The anecdotal evidence brought to light in this descriptive entry was disclosed to me over many years by various sources that include Donal Markey, Al Davison, Floyd Griffith and Gertrude Hegarty. I hope this information is helpful.







**Lot 302**  
**Ferris Wheel Bank**

American - Circa 1935 - 22" Tall  
Originally by Hubley Mfg. Company (1895)  
Near Mint - Works Well  
Estimate: \$9500 - \$12,500

Early collectors pondered whether the Ferris Wheel Bank had ever been produced. It's clear that these pioneers were aware the known patent documents and a line cut illustration from the period also existed. Yet, no specimens of this dynamic and impressively scaled bank had ever surfaced, at least not by 1940. That's when two enthusiastic hobbyists from Philadelphia (Pendergast and Salafian) began to create their own version of the bank. In truth, their task was not too difficult. The top of the bank is surmounted by a popular toy ferris wheel that Hubley actually produced in the late 1890's. It was a replica of the great ferris wheel at the Columbian Exposition staged in Chicago in 1893 and 1894. As there was a relatively ample supply of the toy, the duo needed only to create the coin collecting base. They guesstimated the measurements of the bank's operating chassis by examining the scale of the base in relation to the wheel in all of the extant illustrations. Their guesswork very nearly nailed it.



**Lot 303**  
**The Merry-Go-Round Bank**

(Version with Red & Yellow Canopy)  
 Made by the Kyser & Rex Company  
 Frankford, Pa. - 1880's - 7 1/2" Tall  
 Pristine Plus Paint and Very Bright  
 Estimate: \$45,000 - \$55,000

For most children, their first ride on the carousel represents a very exhilarating and time honored experience. Each in his turn, must overcome their fear of the hurried, almost dizzying, centrifugal whirling around of the fairground device. Only when that fear is vanquished, can they elongate their bodies and stretch upwards to reach daringly for the brass ring. This brightly colored toy bank effectively captures that moment of transformative bliss. The ride operator, with his wand in hand and a peaked yellow cap on his head, indicates where to deposit your coin, presumably as your admission fee to join the ride that's about to begin. The children sit atop carousel animals that include a swan, an ostrich, a dog, a camel and an elephant. Turning the crank, animates the revolving action and chimes a bell. This specimen of the Merry-Go-Round bank is highly exceptional quality and totally original.





**Lot 304**  
**The Court Jester Bank**

Cast Iron & Mixed Metals  
Unknown French Maker  
Early 1900's - 14 1/2" Tall  
Illustrated Page 73 in the Mechanical Bank Book  
Excellent Original Condition  
Estimate: \$5500 - \$7500

The foppish jester is presented almost like an actor on a small circular stage. His contra-postal pose is presented with such outrageous affection that his appearance verges on the absurd. Not a surprise really, since the court jester's main purpose was the comical entertainment of all who visited his master's court. The banner which he supports with his left hand translates from the French into these amusing words "place a coin in my hand and I will say thank you".



**Lot 305**  
**The North Pole Bank**

By J. & E. Stevens Company  
 Cromwell, Ct. - Pat.'d 1910  
 Near Mint and Very Bright  
 Estimate: \$55,000 - \$75,000

Navy Admiral Robert Peary claimed to have reached the North Pole on April 6, 1909. Modern investigation of his expedition now casts doubt on the veracity of this assertion. Nevertheless, the designers at the Stevens Foundry were promptly tasked with the mission to create a suitable bank that memorialized this historic event. Though muted in its visual effects, this elegant bank represents the culmination of their efforts. Very few period specimens of this extraordinary toy are known to exist and this is a real showstopper.



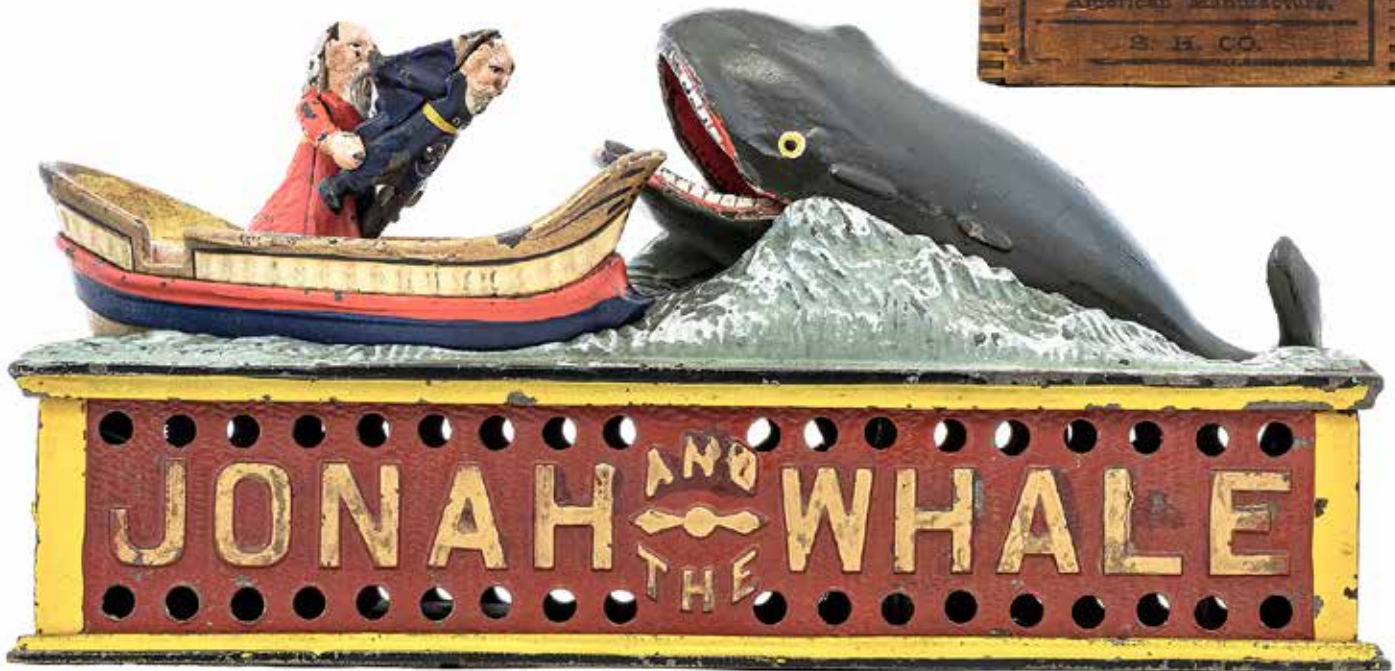




**Lot 306**  
**Chief Big Moon Bank**

Scarce Red & Yellow Base  
By J. & E. Stevens Company  
Cromwell, Ct. - Circa 1899  
Near Mint with Vivid Color  
Estimate: \$12,000 - \$15,000

In the period, the Stevens Company marketed this toy as the Indian Camp Bank. Today, however, collectors refer to it as Chief Big Moon because this wording appears on both sides of the bank. The Chief Big Moon Bank is one of Charles Bailey's truest and most enduring masterpieces. His faultless intuition, along with his penchant for meticulous detail, illustrate why he is often described as the greatest toy bank designer of all time. He created a unique vocabulary of visual realism in toy design and collectors everywhere have been grateful ever since. His banks are not only fun to play with, they are beautiful to look at. For example, for the teepee of the Indian Chief, Bailey created a group of primitive pictographs shallowly incised on the structure's surface. Equally noteworthy is the bas-relief of images that decorate the base of the bank, an array of tomahawks, quivers and warrior shields. The casting is barely raised from the background, and yet, one can make out every detail. Typically, the base for this bank was finished in a palette of metallic colors. However, on rare occasion, the Stevens Company also used this vibrant colored base to showcase the action of the Chief's fishing expedition.



**Lot 307**  
**Jonah and the Whale Bank**

Buffalo, NY - Circa Late 1880's  
Near Mint - Great Lettering  
Includes Original Wood Box  
Estimate: \$14,000 - \$18,000

The parable of Jonah and the Whale plays out in three discrete chapters: disobedience to God while in his service, repentance for the misdeed, and ultimately, forgiveness by God. Remarkably, all three of these narrative elements are present in this small toy bank. Jonah has disobeyed God's instruction to travel to Nineveh. Angered by his behavior, God sends a storm that makes the seas choppy. In an effort to appease God and save the boat from ruin, the crew jettison Jonah overboard. This is the very action we witness when playing with the Jonah Bank. Luckily for Jonah, he is retracted from the whale's gaping and gobbling mouth. Only the penny is swallowed, thereby suffering the plight that Jonah would ordinarily suffer. This represents a very superlative example of the Jonah and the Whale Bank.





**Lot 308**  
**Stump Speaker Bank**

By Shepard Hardware Company  
Buffalo, NY - Circa Late 1880's  
Near Mint & Fully Saturated  
Estimate: \$8000 - \$10,000

Shepard's imagery for the Stump Speaker Bank clearly alludes to the carpetbagger phenomenon that arose in the southern states in postbellum America. This breed of men descended from the north to take unfair advantages of those that had virtually lost everything. They were thoroughly contemptible and morally corrupt. Dressed in a costume that can only be described as obscenely colorful and absurdly over developed, this foppish dandy seems harmless enough, but don't be deceived by his comical appearance, he intends to fleece you of all your spare pennies. Truly Magnificent Quality!!!!

**Lot 309**  
**Uncle Sam Bank**

By Shepard Hardware Company  
Buffalo, NY - Circa Early 1890's  
Ex - Richard Goldstein Collection  
Near Mint and Bright Condition  
Estimate: \$9500 - \$12,500

In modern times, the Uncle Sam Bank is perhaps the most universally recognized toy bank ever created. It has been used as a moniker for savings by banking institutions as part of their advertising campaigns. Also, as a personification of both the American Federal Government and American patriotism, it has been reproduced countless times through the decades. Coins placed in his right hand are deposited into his satchel when the activating lever is pressed. As with other banks from Shepard's Excelsior Series, Uncle Sam has a novel weighted element that causes his lower jaw and white goatee to wobble, as if he is asking you to contribute to his coffers. This is definitely one of the finest and most vibrant examples of the Uncle Sam Bank in the world.



**Lot 309A**  
**Uncle Sam Bank Box**

Shepard Hardware Company  
Buffalo, NY - Early 1890's  
Excellent Plus with the Lid  
Estimate: \$2000 - \$3000







### Lot 310 Green Cabin Bank

By J. & E. Stevens Company  
Cromwell, Ct. - Late 1880's  
Richard Goldstein Collection  
Mint Condition with Rich Color  
Estimate: \$2250 - \$2750

At first glance, the imagery developed for the Cabin Bank seems innocuous, but looking more closely, one finds that negative racial themes abound. The black property owner is portrayed as indolent, lazily standing in his doorway, hands in his pocket, rather than sweeping out his cabin or fixing its broken windows. This is truly one of the most gorgeous examples of the Cabin Bank that you'll ever find.



### Lot 311 Organ Grinder and Performing Bear

By the Kyser & Rex Company  
Frankford, Pa. - Late 1880's  
Pristine Plus Condition  
Estimate: \$5500 - \$7500

The imagery for this bank draws from one of America's most tragic narratives, the War between the States. Tragedy has compelled the organ grinder, shown here dressed as a broken and crippled Confederate officer, to train a bear to give children a show for a penny. He stands next to his plantation, humbly begging you to give him alms. This bank, more than any other, is a painful reminder of the war's negative impact upon its participants. In many cases, this socioeconomic adversity lingered for decades afterwards.



### Lot 312 Patronize the Blind Man

By J. & E. Stevens Company  
Cromwell, Ct. - Early 1880's  
Pristine Plus Condition  
Estimate: \$7500 - \$9500

The "Patronize" bank uses brilliant engineering to put its action into effect. Place your penny in the blind man's spring-loaded hands. When you push the lever on the back of the bank, you can watch the dog advance towards the coin and close his mouth around it. The clever canine's mouth closes and opens because he dips in and out of a channel that allows his spring to function.







**Lot 313**  
**Uncle Remus Bank**

By the Kyser & Rex Company  
Frankford, Pa. - Pat'd Oct. 1891  
Richard Goldstein Collection  
Pristine Plus and Luminous  
Estimate: \$8000 - \$10,000

Uncle Remus has gotten into a neighbor's chicken coop and is seen trying to make off with a prize bird for his dinner. In the same moment, the constable arrives to arrest the chicken thief, but Remus reacts quickly, snapping the coop door shut. Pennies placed in the roof of the building are deposited when you push the chicken's head down. It is very difficult to find this bank in such beautiful condition and with an intact fence.

**Lot 314**  
**Boys Stealing Watermelons**

Rare Solid Outfits for the Boys  
By the Kyser & Rex Company  
Frankford, Pa. - Early 1890's  
Richard Goldstein Collection  
Pristine Condition & Bright  
Estimate: \$2500 - \$3500

Two young boys have glimpsed a watermelon patch in the farmer's yard. The guard dog appears to be slumbering in his doghouse while the boy on his stomach inches forward. He's hoping to grab the melon in front of him without waking the dog. The other boy turns back to look at his efforts as he ducks through the fence with his prize in hand. As the lever is pressed, the boy's hand lowers and the dog jumps out at him.



**Lot 315**  
**Butting Buffalo Bank**

By the Kyser & Rex Company  
Frankford, Pa. - Pat'd 3-20-1888  
Richard Goldstein Collection  
Near Mint & Exceptionally Bright  
Estimate: \$9500 - \$12,500

The inspiration for the imagery portrayed in the Butting Buffalo bank seems hard to decipher. It may be associated with some form of initiation ritual because homemade representations of goats and bison were often used as props by secret societies to induct their new members. Or it may just have been a flight of pure whimsy on the part of the bank's designer. In any case, when the bank's lever is pressed, the buffalo's powerful neck pushes the boy upwards, where he comes face to face with a surprised raccoon. A brilliant example with lots of vivid highlights.





**Lot 316**  
**Calamity Bank**

By the J. & E. Stevens Company  
 Cromwell, Ct. - Circa 1905  
 Illustrated Back Cover Carole Roger  
 Pristine - Some Fade to Base  
 Estimate: \$20,000 - \$25,000

The "Calamity Bank" portrays collegiate football as it was played at the beginning of the 20th Century. In this particular example, we find two defense tacklers from Harvard (crimson details) taking down a running fullback from Yale (blue details). Wearing only nominal protective gear, many players sustained serious injuries. President Teddy Roosevelt viewed this situation as very dangerous. He planned to incorporate the abolition of collegiate football as part of his platform for re-election in 1904.

It's a good thing that his political advisors talked him out of it.



### Lot 317 Chinaman in Boat

Made by Charles Bailey  
Cobalt, Ct. - Early 1880's  
Perelman Toy Museum Collection  
Excellent (Prow Expertly Restored)  
Estimate: \$40,000 - \$50,000

Charles Bailey made a magnificent quartet of finely detailed banks in lead before he went to work for the J. & E. Stevens Company. This foursome includes the Springing Cat, Baby Elephant, Chinaman in Boat and the elusive Darky Fisherman (only 2 known). The "Chinaman" is perhaps the most elaborate of these four pieces. It is certainly the prettiest to look at and it is definitely the most fun to play with. Examining the bank, we discover the chinaman seated in his rickety and rundown sampan boat. In front of him is a tray that reads "Cheap Labor Hotel - Dinner One Cent in Advance". The hotel doesn't trust him. That's why they ask for their payment in advance. The activating lever is actually his long braided queue. Pressing his ponytail carefully in causes his left hand to flip the coin into the bank and reveal his dinner of boiled rat upon a silver tray. On the prow, we find a seasick pussycat who wishes he had not gotten so drunk. Clearly, the design for the Chinaman in Boat was greatly influenced by the negative racist view of the Chinese known as the "Yellow Peril". This is truly one of the most important sociocultural toy banks ever created. Fantastic history of ownership.





**Lot 318**  
**Hall's Excelsior Bank**

Monkey with Rare Lead Head  
By J. & E. Stevens Company  
Cromwell, Ct. - Circa 1876  
Donal Markey Collection  
Near Mint & Very Bright  
Estimate: \$2500 - \$3500



**Lot 319**  
**Patriotic Hall's Lilliput Bank**

By J. & E. Stevens Company  
Cromwell, Ct. - Circa 1880  
Donal Markey Collection  
Mint Plus and Very Bright  
Estimate: \$8000 - \$10,000

This is thought to be the finest known  
example of the Lilliput Bank finished in  
red, white & blue.



**Lot 320**  
**Patriotic Novelty Bank**

By J. & E. Stevens Company  
Cromwell, Ct. - Circa 1880  
Donal Markey Collection  
Near Mint - Thick Rich Color  
Estimate: \$6000 - \$8000





**Lot 321**  
**The New Bank**  
 By J. & E. Stevens Company  
 Cromwell, Ct. - Late 1870's  
 From Donal Markey Collection  
 Near Mint - Great Details  
 Estimate: \$6000 - \$8000



**Lot 322**  
**U. S. and Spain Bank**  
 By J. & E. Stevens Company  
 Cromwell, Ct. - Circa 1898  
 From Frank Kidd Collection  
 Near Mint with Rich Color  
 Estimate: \$27,500 - \$37,500





**Lot 323**  
**Girl in Victorian Chair**

(Red Dress Variation)  
 Made by W. S. Reed Toy Company  
 Leominster, Ma. - Early 1880's  
 Pristine Plus & Bright Paint  
 Estimate: \$9500 - \$12,500



For his 1948 book on mechanical banks, author John Meyer commissioned a cartoonist to render a drawing of a hobbyist dozing off while seated in his armchair. A cartoon balloon emanates from his brain. During his nap, he wishfully daydreams about all the scarce banks he hopes one day to be able to acquire. Central among them is the Girl in Victorian Chair Bank even though, this bank haunts collectors because it is nearly impossible to find an example in amazing condition like this one.



**Lot 324**  
**The Dog Tray Bank**

By the Kyser & Rex Company  
 Frankford, Pa. - Pat'd 9-21- 1880  
 Excellent Plus with Original Tray  
 Estimate: \$7000 - \$9000

The weight of pennies and the natural forces of gravity cause this eager puppy to lean forward and make your deposit for you. Seldom found in all original condition like this beauty.

**Lot 325**  
**Watch Dog Safe Bank**

By J. & E. Stevens Company  
 Cromwell, Ct. - Mid 1890's  
 Ex - Edwin Mosler Collection  
 Near Mint with Original Tag  
 Estimate: \$7500 - \$9500

A watchful dog sits on the carpet at the front door of the safe, presumably guarding your precious savings. When you lift the lever, coins placed in the slot are deposited and the dog opens his mouth to bark. Three spinning tumblers need to be set in the correct position (2-1-7) in order to open the safe and retrieve your money. This is a highly superior A+++ specimen of the bank.





**Lot 326**  
**The Confectionery Bank**

Made by the Kyser & Rex Company  
 Frankford, Pa. - Mid 1880's - 9" Tall  
 Pristine Condition & has Original Tray  
 Estimate: \$25,000 - \$30,000

The designs created by Kyser & Rex demonstrate a flair for composition and a penchant for narrative that has no equal among other toy bank manufacturers. Their ability to fashion shrunken down environments that feel so perfectly developed give their toys a genuine timeless quality. For example, in the present toy bank, the viewer can nostalgically ponder what it must have felt like to visit the local confectionery shop and buy some penny candies. The Confectionery Bank is the only instance in which we find a toy bank that tangibly rewards its operator for saving pennies. Through a hidden removable door found on the back of the bank, thin Necco wafer candies could be loaded. Pushing the operating button firmly causes the shop girl to turn leftward. At the same time, the lowest right drawer opens and the thin circular candy is pushed on to her tray. Release the button and watch her turn forward again to offer you the sweet confection. This is a very superior specimen of the Confectionery Bank.





**Lot 327**  
**Mickey Mouse Still Bank**

A Rare Cast Iron Specimen  
Unknown French Maker  
Mid 1930's - 8 1/4" Tall  
Pristine Original Condition  
Estimate: \$5000 - \$7000

Mickey is marked "Deposé" on the reverse between his shoulders, clearly indicating that he was French made. We have never before seen an example of this bank in which Mickey's shirt is painted white. Very high end quality.



**Lot 328**  
**The Hannibal Bank**

American - 1950 - 7" Long  
Ex - Ed Mosler Collection  
Illustrated Page 119 in the Mechanical Bank Book  
Excellent Original Condition  
Estimate: \$2000 - \$2500



**Lot 329**  
**Primitive Humpty Dumpty Bank**

Unknown European Maker  
Circa Late 1930's - 7 1/4" Tall  
Frank Kidd Bank Collection  
Good Original Condition  
Estimate: \$1500 - \$1800

At this time, we know of no other examples of this unusual toy bank. In both design and painted finish, this piece bears some resemblance to a Danish made Standing Jolly Bank.



**Lot 330**  
**John Bull's Money Box**

Made by Sydenham & McCoustra  
 Staffordshire, UK - Circa 1909  
 From the Ed Mosler Collection  
 Pristine Condition - Great Patina  
 Estimate: \$25,000 - \$30,000

John Bull is a national personification of Great Britain. His attire typically consists of a neutral buff-colored vest and breeches, a brightly hued frock coat, and knee-high riding boots. His shallow top hat, often referred to as a John Bull topper, indicates his middle-class identity. Unlike Uncle Sam, he is not a figure of authority, but rather a commoner who prefers a simple life of domestic peace. This is a highly superior example of an extremely rare toy bank.

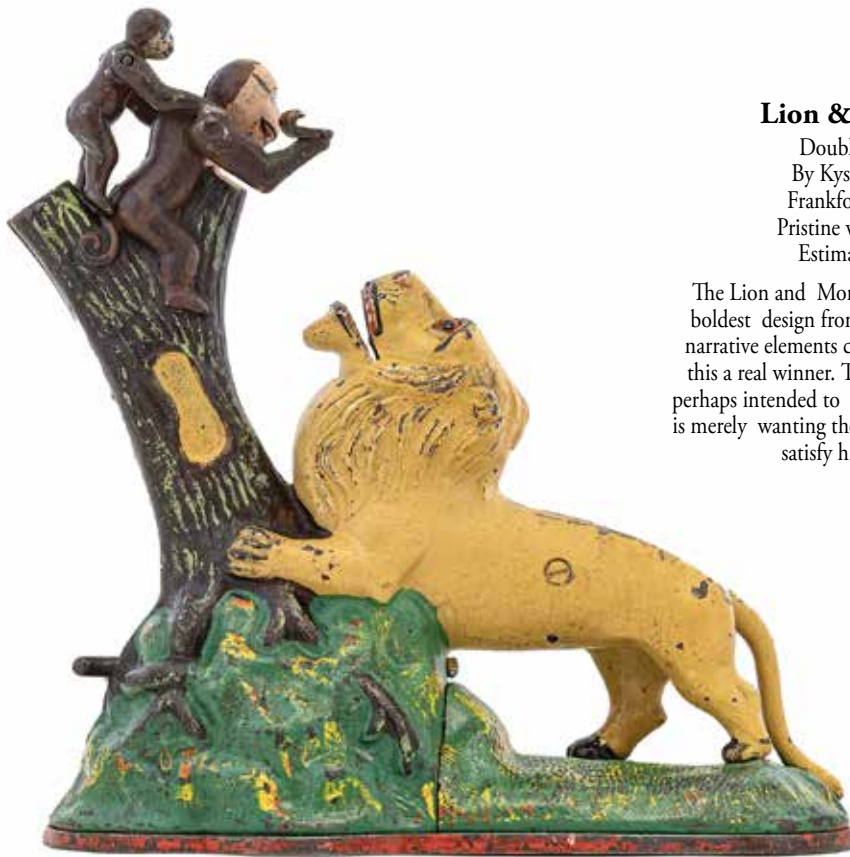
**Lot 331**  
**The Bull & Bear Market Bank**

Second Generation Production  
 Unknown Maker - Circa 1940's  
 From the Bill Werbell Collection  
 Pristine - Alligatorated Surface  
 Estimate: \$9500 - \$12,500

There is only one known period specimen of the Bull & Bear Bank and the bear figure was lacking when it was first discovered many years ago. An unknown bank enthusiast created copies of the Bull & Bear in the late 1940's and 1950's. These second generation pieces are extremely popular with collectors. This particular specimen has a dry alligatorated surface which makes it look older and more authentic.







**Lot 332**  
**Lion & Monkeys Bank**

Double Peanut Variation  
By Kyser & Rex Company  
Frankford, PA - Mid 1880's  
Pristine with Great Highlights  
Estimate: \$3500 - \$4500

The Lion and Monkeys represents the biggest and boldest design from the Kyser & Rex firm. Simple narrative elements coupled with vibrant color make this a real winner. The lion's sparkling glass eyes are perhaps intended to intensify his ferocity. However, he is merely wanting the monkeys to feed him a penny to satisfy his hunger for savings.



**Lot 333**  
**Boy Scout Camp Bank**

By J. & E. Stevens Company  
Cromwell, Ct. - Circa 1916  
Excellent Plus Condition  
Estimate: \$4500 - \$5500

Lessons in self-reliance are central to the stated mission of the Boy Scouts of America. This type of discipline often involved participation in a wide variety of outdoor activities. Camping provided the perfect situation in which boys could not only grow up, but also commune with nature to develop a humble sense of their place in God's vast landscape.

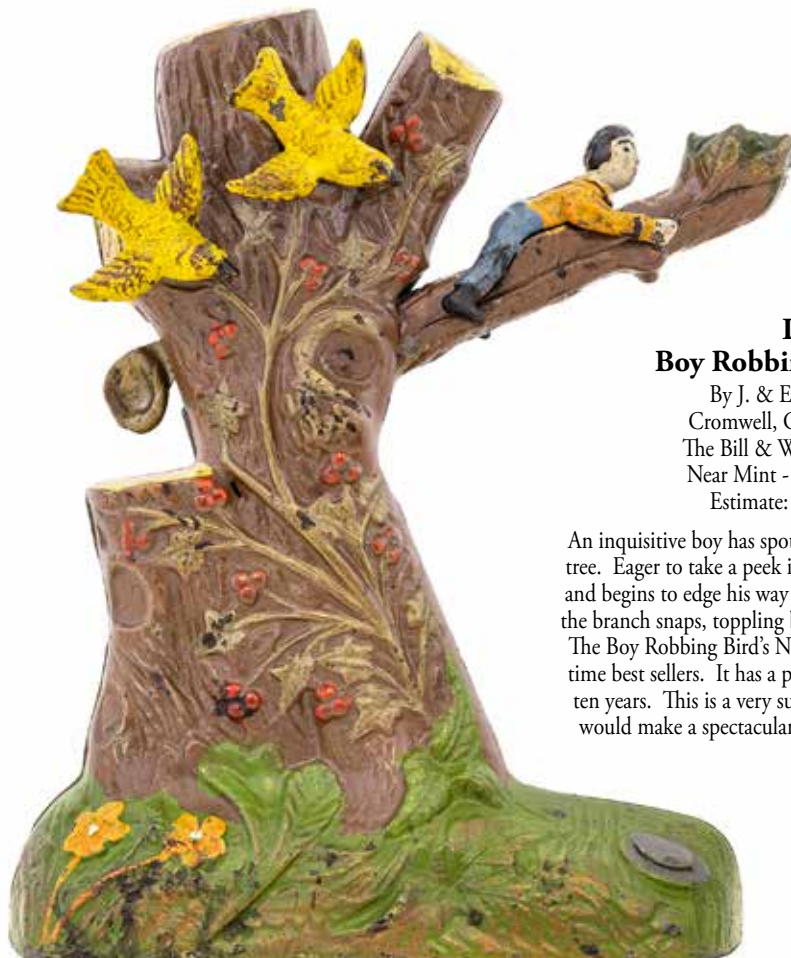




**Lot 334**  
**The Eagle & Eaglets Bank**  
 Very Rare with Pale Yellow Chicks  
 By the J. & E. Stevens Company  
 Cromwell, Ct. - Circa Late 1880's  
 Pristine - Exceptional Highlights  
 Estimate: \$3500 - \$4500



**Lot 335**  
**Mauve Owl Turns Head Bank**  
**With White Feather Highlights**  
 By the J. & E. Stevens Company  
 Cromwell, Ct. - Circa Mid 1880's  
 Near Mint - Impeccable Surface  
 Estimate: \$1500 - \$1800



**Lot 336**  
**Boy Robbing the Bird's Nest**  
 By J. & E. Stevens Company  
 Cromwell, Ct. - Circa Late 1890's  
 The Bill & Wendy Jones Collection  
 Near Mint - Fully Saturated Color  
 Estimate: \$17,500 - \$22,500

An inquisitive boy has spotted a nest in a low lying branch of a tree. Eager to take a peek in the nest, he shimmies up the vines and begins to edge his way onto the tree limb. When suddenly, the branch snaps, toppling both him and the nest to the ground. The Boy Robbing Bird's Nest was to become one of Steven's all time best sellers. It has a production run that lasted more than ten years. This is a very superior A+ specimen of the bank. It would make a spectacular addition to any collector's shelves.



**Lot 337**  
**Medium Organ Bank**

By Kyser & Rex Company  
 Pennsylvania - Mid 1880's  
 Ex - Bill Jones Collection  
 Near Mint & Very Bright  
 Estimate: \$2000 - \$2500



**Lot 338**  
**Organ Bank - Cat & Dog**

By Kyser & Rex Company  
 Pennsylvania - Mid 1880's  
 Outstanding Near Mint Condition  
 Estimate: \$3000 - \$4000



**Lot 339**  
**Organ Bank - Boy & Girl**

By Kyser & Rex Company  
 Pennsylvania - Mid 1880's  
 Near Mint and Very Bright  
 Estimate: \$4500 - \$5500



**Lot 340**  
**I Always Did 'Spise a Mule**

Boy Seated on Bench Version  
 By J. & E. Stevens Company  
 Cromwell, Ct. - Circa 1897  
 Virtually Mint Condition  
 Estimate: \$1750 - \$2250

A boy has dismounted his mule to give him some disciplining. To reinforce his message, the boy threatens the poor beast with a rigid stick. In the end, it is the mule that gives the boy a lesson instead. Pressing the activating button causes the mule to turn around and kick the boy in the face with his rear legs. A very superior example.

**Lot 341**  
**Spise the Mule Jockey Toy**

By J. & E. Stevens Company  
 Cromwell, Ct. - Late 1890's  
 Gertrude Hegarty Collection  
 Stunning Pristine Condition  
 Estimate: \$950 - \$1250

The toy version of this bank is twenty times more rare than the actual bank. Mrs. Hegarty's example of this toy is of very stunning quality.



**Lot 342**  
**The Darktown Battery Bank**

By J. & E. Stevens Company  
 Cromwell, Ct. - Circa 1888  
 Near Mint - Great Lettering  
 Estimate: \$7500 - \$9500

The Darktown Battery ranks among the most celebrated of all mechanical banks. Its sports theme, composition, vivid colors and dynamic action all contribute to its wide popular appeal. Place a coin beneath the spring-loaded thumb of the pitcher's right hand and press the lever. He pitches the coin as the batter swings, but the coin sails too quickly by him, deflecting off the catcher's chest protector and dropping into the bank.





