



THE SPRING SPECTACULAR GREAT TOYS & BANKS



SATURDAY, MAY 8TH, 2021



RSL AUCTIONS

P.O. Box 635
Oldwick, NJ 08858
908-823-4049
Cell 917-991-7352
FAX 908-823-4519
rslauctions@yahoo.com
rslauctionco.com

SPECIALISTS

Ray Haradin

Pittsburgh, PA
Banks, Toys, Soldiers, Tiffany Lamps
412-343-8733
raytoys@aol.com

Steven Weiss

New York, NY
Banks, Toys, American Folk Art, American Art & Sculpture
212-729-0011
sweiss57@icloud.com

Leon Weiss

Oldwick, NJ
Banks, Toys, American Folk Art and Door Stops
908-823-4049
Cell 917-991-7352
leonweiss@me.com

Julian Abernethy

Sr. Auction and Computer Specialist

Bre Day

Senior Auction Specialist
412-841-0623
bremarieday@gmail.com

Angela Weiss

908-823-4049
a.weiss@rslauctionco.com
Office Manager, Website and Shipping Coordinator

 [Facebook.com/RSL-Auction-Company](https://www.facebook.com/RSL-Auction-Company)

 [@rslauctions](https://twitter.com/rslauctions)



THE SPRING SPECTACULAR GREAT TOYS & BANKS

AUCTION #36

Saturday, May 8th, 2021 at 10 am Eastern Lots 1-398

WEBSITES:

rslauctionco.com LiveAuctioneers.com or BidSpirit.com

Auction will be held live without bidders in attendance.
Bids can be executed Absentee, Phone or Online via
LiveAuctioneers.com or BidSpirit.com

RSL Auctions
295 US Hwy 22 East
Suite 204 West
Whitehouse Station, NJ 08889
Look for "One Salem Square" Sign
Gallery Phone: 908-823-4049

PREVIEW:

Preview by appointment only.
Please call (908) 823-4049 to reserve a time to preview.

All visitors to the gallery must wear a mask and gloves
while in the gallery.

ABSENTEE AND PHONE BIDDING DEADLINE:

BIDS MUST BE RECEIVED BY FRIDAY, MAY 7th 2021

MAIL BIDS TO:

RSL Auctions, PO Box 635, Oldwick, NJ 08858

CALL BIDS TO:

Leon Weiss 908-823-4049 - Cell 917-991-7352

FAX BIDS TO:

RSL Auctions 908-823-4519

PAYMENT & SHIPPING

Leon Weiss 917-991-7352

DIRECTIONS TO OUR GALLERY

295 US Hwy 22 East
Suite 204 West
Whitehouse Station, NJ 08889
908-823-4049

From New England and Northern New Jersey

Cross the Tappan Zee Bridge and continue West on 287/87 about 14 miles to 287 South. Take 287 South to Exit 21B and merge onto 78 West (Clinton). Go to Exit 24 Whitehouse/Oldwick. Turn left at the light (towards Whitehouse). Go exactly 2 miles and turn onto U.S. Highway 22 West. Go 1.4 miles, staying in the left lane and passing one traffic light (Merck Drive). Go to the second turnaround after that light and head East on U.S. Highway 22 for 150 feet. Turn right into parking lot. Sign reads "One Salem Square".

From New York City

Lincoln or Holland Tunnel to the New Jersey Turnpike South. Travel only a few miles to Exit 14A-C. Get onto Route 78 West (Clinton) to Exit 24 (Whitehouse/Oldwick). Turn left at the light (towards Whitehouse). Go exactly 2 miles and turn onto U.S. Highway 22 West. Go 1.4 miles, staying in the left lane and passing one traffic light (Merck Drive). Go to the second turnaround after that light and head East on U.S. Highway 22 for 150 feet. Turn right into parking lot. Sign reads "One Salem Square".

Southern New Jersey and Points South

Take New Jersey Turnpike or Garden State Parkway to 287 North. It is about 20 - 22 miles to Route 78 West (Exit 21-B). Go to Exit 24 Whitehouse/Oldwick. Turn left at the light (towards Whitehouse). Go exactly 2 miles and turn onto U.S. Highway 22 West. Go 1.4 miles, staying in the left lane and passing one traffic light (Merck Drive). Go to the second turnaround after that light and head East on U.S. Highway 22 for 150 feet. Turn right into parking lot. Sign out front reads "One Salem Square".

Philadelphia Area

Take 95 North and cross into New Jersey. Exit for Route 31 (about 4 miles into New Jersey). Take 31 North about 20 miles to Route 78 East. (There are some traffic circles on 31 North – Always stay on 31 North until you hit Route 78 East). Take exit 18 and merge onto U.S. Highway 22 East and go 4.1 miles and turn into the parking lot. Sign out front reads "One Salem Square".

From the West

Take 78 East and cross into New Jersey. Take Exit 18 and merge onto U.S. Highway 22 and go 4.1 miles and turn into the parking lot. Sign out front reads "One Salem Square".

Please note that items sold in this catalog do not represent the personal views of RSL and it's employees.

THE SPRING SPECTACULAR GREAT TOYS & BANKS

SATURDAY, MAY 8TH, 2021
AT 10AM



Accepting quality consignments
for future sales.

CONDITION GRADES

Mint (M)	98%+
Near Mint (NM).....	97-98%
Pristine.....	95-96%
Excellent (EX)	90-94%
Very Fine (VF)	85-89%
Very Good	80-84%

Prices realized may be downloaded
from liveauctioneers.com
immediately after the sale closes.

RSL AUCTIONS: CONDITIONS OF SALE

1. RSL Auctions acts as an agent for the seller. The contract for the sale of the property is between the seller and the buyer. No statements made within this catalog or made by a representative of or employee of RSL Auctions shall be deemed to be a warranty, representation, or assumption of liability with respect to the property's age, condition, size, quality, variety, importance, provenance, or historical relevance. All property is sold "as is".

2. All sales are final.

3. Buyers are responsible for satisfying themselves concerning the condition of the property.

4. The auctioneer will be solely responsible for determining the bidding increments.

5. The auctioneer will be the final judge in deciding which bidder has won an item. In the event of a dispute, the auctioneer at his discretion, shall decide whether to reopen bidding or not.

6. LiveAuctioneer's Bids: in order to bid through LiveAuctioneers, you must first register on LiveAuctioneer's website. RSL Auctions reserves the right, in our sole discretion, to refuse your registration or participation in the auction or to revoke your permission to participate before, during or after the sale.

6A: Bidspirit Bids - in order to bid through Bidspirit.com you must first register on the Bidspirit.com website. RSL Auctions reserves the right, in our sole discretion, to refuse your registration or participation in the auction or to revoke your permission to participate before, during or after the sale.

7. Absentee Bids: If you are unable to attend the actual sale, RSL Auctions are authorized to execute bids on your behalf. Complete an Absentee Bid Form and return to RSL Auctions BEFORE the absentee bid deadline. We cannot accept "Buy" bids. In the event that two identical bids are received, the first bid form received by RSL Auctions will have preference.

8. Phone Bids: Phone bids will also be accepted. To qualify for a phone line the same procedure of authorization required for an absentee bid is required. A backup bid in the event a party cannot be reached by phone is not required, but strongly recommended. There are a limited number of phone lines available. In the event that there are more requests than lines available, preference will go to the highest bidding parties. In the event, whether human or technical, that a phone call is not made, disconnected or the bidder cannot be reached at the number left, the backup bid will be executed. RSL Auctions cannot guarantee that phone bids will be executed.

9. Submit all questions regarding upcoming auction items at least 48 hours prior to the date of auction. We will make every effort to answer all submitted questions in a timely manner. However, we cannot guarantee that questions submitted within 48 hours of the auction date will be answered prior to the auction.

10. The buyer is required to pay New Jersey sales tax 7% unless exemption is allowed under the laws regulating such tax. Dealers must present a valid tax ID certificate in order to qualify for exemption.

11. Payment may be made by cash, personal check or credit card. A 23.5% buyer's premium will be added to all successful bids. A 3.5% discount will be applied for payment made by cash or personal check making the buyer's premium 20% if paid within 15 days. **Discount only applied to payment made within this time frame.** An additional 5% will be added to bids made through liveauctioneers.com. An additional 4% will be added to all bids made through Bidspirit.com. RSL Auctions reserve the right to hold all merchandise paid by check until payment has been cleared by the bank. This may take up to one month.

12. All accounts are to be settled within 15 days of the end of the sale.

13. There will be a \$50 charge added to all wire transfers.

14. In the event property is not paid for in full, RSL Auctions may pursue one or more of the following rights or remedies. A) charge interest at 2% per month of the unpaid balance. B) hold the defaulting buyer liable for the total amount due and commence legal proceedings for its recovery together with interest, legal fees and costs to the fullest extent permitted under applicable law. C) cancel the sale D) resell the property E) pay the seller the amount up to the net proceeds payable in respect to the amount bid by the default buyer minus one bid. F) or to take such other action as we deem necessary or appropriate.

15. Shipping may be arranged through RSL Auctions. A shipping fee of \$20 per lot, \$80 per 5 lots or \$150 per 10 lots is charged plus the incurred postage and insurance. International and large items will incur additional costs. Shipped items may take up to 45 days to be delivered. Due to Coronavirus, we strongly recommended that all International Packages be shipped via DHL Worldwide Express. We will gladly obtain a shipping quote for customers.

However, if you prefer to ship via the US Postal Service or any other carrier, we will make the arrangements. RSL Auction Company will not guarantee timely delivery or be financially responsible for those shipments.

Additional Shipping and Handling charges for all packages are listed above.

16. RSL Auctions has the capability to ship to international bidders. **By law, RSL Auctions cannot, and will not, declare lesser values for any international purchases and all shipments will include the invoice with purchase totals including the buyer's premium and shipping cost. All international bidders are responsible for knowing their country's laws on importing items and for paying all customs and duties on the items.**

17. RSL Auctions are not responsible for any typographical errors or omissions in this catalog or price key. Photographs in this catalog are of the actual objects being sold but are not shown to scale.

18. RSL Auctions reserve the right to refuse admission, participation in or request the departure of any person/persons.

19. RSL Auctions reserves the right to withdraw any property before, during and after the sale and shall have no liability whatsoever for such withdrawal.

20. In no event will our liability to a purchaser exceed the purchase price actually paid. RSL Auctions will not be responsible for any errors or failures to execute bids placed online or for any errors or omissions in connection therewith including, without limitation, errors or failures caused by (i) a loss of connection to the internet or the LiveAuctioneers Online Platform software by either RSL Auctions or the client; (ii) a breakdown or problem with RSL Auctions or LiveAuctioneers' Online Platform software; or (iii) a breakdown or problem with a client's internet connection, mobile network or computer.

21. RSL Auction's content on LiveAuctioneers' Online Platform ("Web Site" or "Platform") is published and maintained by LiveAuctioneers. If you are a registered user of LiveAuctioneers, the LiveAuctioneers' Privacy Policy governs your agreement with LiveAuctioneers with respect to LiveAuctioneers' collection, use, storage, and disclosure of your personal information. RSL Auctions does not control and is not responsible for the information and privacy practices of LiveAuctioneers on the LiveAuctioneers' Web site, which is operated entirely by LiveAuctioneers. You agree that RSL Auctions and its affiliates will not be responsible for, and that you release RSL Auctions and its affiliates from, any and all claims, liabilities, damages, losses and expenses related to unauthorized access to or use of, or any security breach relating to or affecting, LiveAuctioneers collection, use, storage, and disclosure of your personal information.

22. If any part of these Conditions of Sale are found by any court to be invalid, illegal or unenforceable, that part shall be discounted and the rest of the conditions shall continue to be valid to the fullest extent permitted by law.

23. By bidding at auction, whether present in person or by agent, by written bid, telephone or other means, the buyer indicates acceptance of these Conditions of Sale.

24. The rights and obligations with respect to the Conditions of Sale shall be governed by the laws of the state of New Jersey.

25. All rights reserved. Entire contents Copyright 2021. RSL Auctions Copyright includes, but not limited to, print, media, microfilm and electronic media, such as CD-ROM's and online computer services.



Lot 1
"LEU" Vending Bank
 Made by Hartwig & Vogel
 Germany - 1910's - 6" Tall
 Condition: Excellent
 Estimate: \$250 - \$325



Lot 2
Signal Cabin Bank
 Made by Johann Distler
 Nuremberg - 1930 - 5" Tall
 Condition: Excellent Plus
 Estimate: \$225 - \$300



Lot 3
"GOLD" Vending Bank
 Made by Stollwerck Bros.
 Cologne, Germany - 1910's
 Condition: Pristine
 Estimate: \$250 - \$325



Lot 4
Lucky Wheel Money Box
 Made by W & R Jacob Company
 England - 1920's - 7 1/2" Tall
 Condition: Excellent Plus
 Estimate: \$350 - \$450



Lot 5
Your Weight One Cent Scale
 American - 1930's - 6" Tall
 Condition: Excellent Plus
 Estimate: \$200 - \$300



Lot 6
Beefeater Sentry Bank
 By Saalheimer & Strauss
 Germany - 1920's - 7 1/2" Tall
 Condition: Excellent Plus
 Estimate: \$550 - \$750

Scarce with advertising for Lyons Toffee under base.



Lot 7
Treasure Chest Music Bank

O. H. Braiser Co.
Tacoma, Wa. - 1930 - 6" Long
Condition: Excellent
(Plaque Overcleaned)
Estimate: \$300 - \$400

Lot 8
Gem Registering Bank

Designed By Charles Bailey
Made by J. & E. Stevens Company
Cromwell, CT - Circa Mid 1890's
Condition: Good Condition
(label scraped, small piece of trap missing)
Estimate: \$500 - \$700



Lot 9
Watch Dog Safe Bank

Made by J. & E. Stevens Company
Cromwell, CT - Circa Mid 1890's
Condition: Excellent (lacks the squeaker)
Estimate: \$500 - \$700



Lot 10
Fortune Tellers Savings Bank

Designed by Aaron Kaufman
Made by Baumgarten & Company
Baltimore, Md - Patented 1901
Condition: Very Fine Nickel Plating
(missing the small glass cover and
tiny chip on rear panel)
Estimate: \$550 - \$750





Lot 11
Miniature Organ Bank

By Kyser & Rex Company
Frankford, PA - Mid 1880's
Condition: Very Good
(clapper not working)
Estimate: \$400 - \$500



Lot 12
Organ Bank with Cat & Dog

Made by Kyser & Rex Company
Frankford, PA - Circa Mid 1880's
Condition: Very Good
Estimate: \$400 - \$500



Lot 13
Trick Dog Bank

• Solid Blue Base •
By Hubley Mfg. Company
Condition: Excellent Plus
(trap missing)
Estimate: \$275 - \$375

Lot 14
Trick Dog Bank

• Six Part Base •
Made by Shepard Hardware
Buffalo, NY - Early 1890's
Condition: Very Good
(trap missing)
Estimate: \$550 - \$750





Lot 15
Humpty Dumpty Bank

By Shepard Hardware
Buffalo, NY - Early 1890's
Condition: Good
Estimate: \$400 - \$600



Lot 16
Punch & Judy Bank - Large Letters

Made by the Shepard Hardware Company
Buffalo, New York - Circa Early 1890's
Condition: Very Good Original
Estimate: \$950 - \$1250

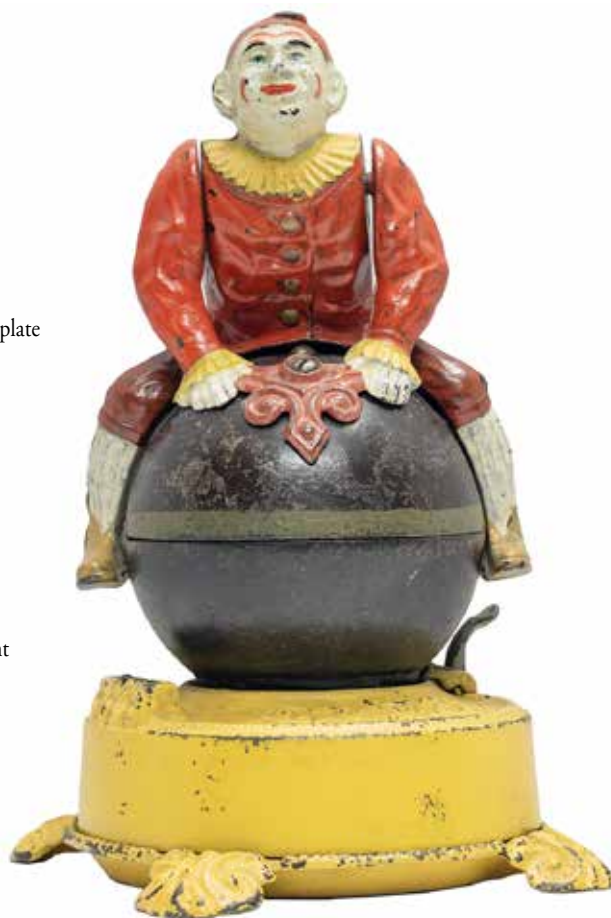


Lot 17
Cat and Mouse Bank

By J. & E. Stevens Company
Cromwell, CT - Circa 1890's
Condition: Very Good with Replaced Baseplate
Estimate: \$700 - \$900

Lot 18
Clown on Globe Bank

By J. & E. Stevens Company
Cromwell, CT - Circa 1890's
Condition: Good with Substantial Paint
Restoration (Looks Amazing)
Estimate: \$500 - \$700





Lot 19
The Snap-It Bank

By H. L. Judd Mfg. Co.
Wallingford, CT - 1890
Condition: Excellent
Estimate: \$350 - \$450



Lot 20
Large Crown Still Bank

By J. & E. Stevens Company
Cromwell, CT - Circa 1890's
Condition: Fine
Estimate: \$400 - \$500



Lot 21
Yellow Lilliput Bank

By J. & E. Stevens Company
Cromwell, CT - Circa 1880's
Condition: Excellent
Estimate: \$500 - \$700



Lot 22
Novelty Bank

By J. & E. Stevens Company
Cromwell, CT - Circa 1880's
Condition: Very Good
Estimate: \$350 - \$450



Lot 23
Yellow Magic Bank

By J. & E. Stevens Company
Cromwell, CT - Circa 1880's
Condition: Very Good
Estimate: \$400 - \$600



Lot 24
New Bank

By J. & E. Stevens Company
Cromwell, CT - Circa 1870's
Condition: Good
(left roof corner repaired)
Estimate: \$400 - \$600



Lot 25
Tank & Cannon Bank

• Cast Iron Specimen •
Designed by the Starkies
Burnley, UK - Early 1920's
Condition: Fine
Estimate: \$750 - \$950

Lot 26
Boy Scout Camp Bank

By J. & E. Stevens Company
Cromwell, CT - Early 1910's
Condition: Very Fine
Estimate: \$2000 - \$3000

Three young scouts have found a good campsite and pitched their tent. One boy is seen emerging from inside the tent. Another raises and swings the flag. While a third stands watch over tonight's dinner cooking in the cauldron.





Lot 27
Tabby Bank
 Probably by Kyser & Rex
 Pennsylvania - Late 1880's
 Condition: Fine
 Estimate: \$550 - \$750



Lot 28
Bill E. Grin Bank
 By J. & E. Stevens Company
 Cromwell, CT - Circa 1915
 Condition: Very Good Original
 Estimate: \$500 - \$700



Lot 29
Peg Leg Beggar Bank
 Salafian Second Casting
 Philadelphia - 1930's
 Condition: Fine
 Estimate: \$500 - \$700



Lot 30
Tammany Bank
 By J. & E. Stevens Company
 Cromwell, CT - Late 1870's
 Condition: Excellent
 Estimate: \$400 - \$600
 The most creative use of political satire ever
 deployed in the production of toy banks.



Lot 31
Freedmans Bureau Bank
 Unknown Maker
 American - 1865
 Condition: Very Fine
 Estimate: \$800 - \$1000

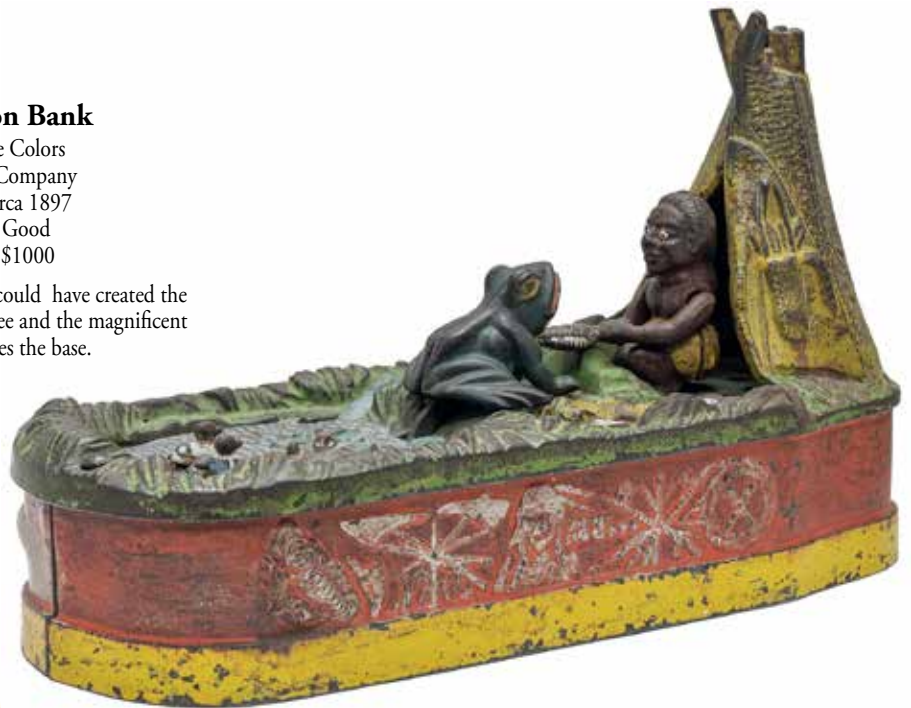
Lot 32
The Kiltie Bank
 By John Harper Ltd.
 Willenhall, UK - 1931
 Condition: Very Good
 Estimate: \$750 - \$950



Lot 33
Chief Big Moon Bank

Red & Yellow Base Colors
By J. & E. Stevens Company
Cromwell, Ct. - Circa 1897
Condition: Very Good
Estimate: \$800 - \$1000

None other than Charles Bailey could have created the inventive hieroglyphs of the teepee and the magnificent bas relief that decorates the base.



Lot 34
Speaking Dog Bank

Made by Shepard Hardware
Buffalo, NY - Early 1890's
Condition: Very Good (no trap)
Estimate: \$550 - \$750

In an effort to have a companion with whom she can converse, we find a young girl giving her pet dog some instruction on how to bark (speak).



Lot 35
Jonah & the Whale Bank

Made by Shepard Hardware
Buffalo, NY - Early 1890's
Condition: Very Good
(boat repainted)
Estimate: \$800 - \$1000

This bank cleverly illustrates moral lessons from the Jonah & the Whale narrative. As Jonah all too strenuously discovers, dire consequences can stem from the telling of a lie.





Lot 36
Yellow Cabin Bank

By J. & E. Stevens Company
Cromwell, Ct. - Circa 1885
Condition: Excellent
Estimate: \$400 - \$600



Lot 37
Green Cabin Bank

By J. & E. Stevens Company
Cromwell, Ct. - Circa 1885
Condition: Very Good
Estimate: \$350 - \$450



Lot 38
Stump Speaker Bank

Made by Shepard Hardware
Buffalo, NY - Early 1890's
Condition: Very Fine
(original trap is unpainted)
Estimate: \$1000 - \$1500

This represents a terrific satirical image of a postbellum carpetbagger. His mendacious tongue charms you into giving him your coins.



Lot 39
Bull Dog - Coin on Nose

Rare Red Blanket Version

By J. & E. Stevens Company
Cromwell, Ct. - Mid 1880's
Condition: Excellent
Estimate: \$550 - \$750



Lot 40
'Spise the Mule - Jockey Over

By J. & E. Stevens Company
Cromwell, Ct. - Mid 1890's
Condition: Very Good
Estimate: \$300 - \$400



Lot 41
Calamity Bank

By J. & E. Stevens Company
Cromwell, Ct. - Circa 1901
Condition: Professionally Restored
Estimate: \$3000 - \$4000

This example depicts two Yale players tackling the Harvard fullback. The bank has been professionally restored.



Lot 42
Security Safe / White City #326

American - 1890's - 4.125" T
Condition: Excellent Plus
Estimate: \$150 - \$200



Lot 43
Hexagon Door Safe
with Grill

Klotz Mfg.
Chicago, IL - 1915 - 5.375" T
Condition: Fine
Estimate: \$200 - \$275



Lot 44
National Safe

By Kenton Hardware
Kenton, OH - 1910 - 5" T
Condition: Fine
Estimate: \$75 - \$125



Lot 45
Bank of Industry

By Kenton Hardware
Kenton, OH - 1905 - 5.375" T
Condition: Excellent Plus
Estimate: \$150 - \$200



Lot 46
Jewel Safe with Grill

By J. & E. Stevens Company
Cromwell, Ct. - 1910 - 5.5" T
Condition: Excellent
Estimate: \$175 - \$250



Lot 47
Bank of Commerce

By Kenton Hardware
Kenton, OH - 1902 - 6.625" T
Condition: Fine
(lock mechanism appears complete but not working)
Estimate: \$175 - \$250



Lot 48
Burglar Proof House Safe (KLD)

By J. & E. Stevens Company
Cromwell, Ct. - 1897 - 5.875" T
Condition: Excellent Plus
Estimate: \$150 - \$200



Lot 49
Kodak Bank

By J. & E. Stevens Company
Cromwell, CT - 1905 - 4.25" T
Condition: Excellent Plus
Estimate: \$175 - \$250



Lot 50
Sampson Safe - Iron Sides

By Arcade Mfg. Co.
Freeport, IL - 1902 - 5.25" T
Condition: Fine
Estimate: \$225 - \$300



Lot 51
Chicago Savings / New York National

By Kenton Hardware
Kenton, OH - 1910 - 6" T
Condition: Excellent (see description)
Estimate: \$300 - \$400

A very scarce and desirable safe, unfortunately it has a 3" crack in its base.



Lot 52
Libertas Safe

By Mudd Mfg. Co.
Chicago, IL - 1906 - 6.625" T
Condition: Fine
Estimate: \$450 - \$650

A scarce safe. Two half moon shaped casting flaws in the base.



Lot 53
Army / Navy Safe

By Kenton Hardware
Kenton, OH - 1905 - 6.125" T
Condition: Very Fine (needs a cleaning)
Estimate: \$500 - \$700

The graphics on this scarce safe are second to none. This is the electroplated version.



Lot 54
Diminutive Spelter Cat

German - 1920's - 3.125" T
Condition: Very Fine Paint (see description)
Estimate: \$200 - \$300

This is a scarce little cutie. The rear hinge must be reattached.



Lot 55
Spelter Lion with Glass Eyes

German - 1930 - 5.5" L
Condition: Excellent
Estimate: \$350 - \$450



Lot 56
Spelter Seated Cat with Bow

German - 1925 - 4.5" T
Condition: Very Fine
Estimate: \$250 - \$325



Lot 57
The Bremerton Musicians

German - 1925 - 5.375" T
Condition: Excellent Plus
Estimate: \$900 - \$1200

A scarce, colorful and charming spelter bank. It depicts "The Musicians of Bremen", a popular fairy tale by the Brothers Grimm published in 1819.



Lot 58
The Royal Coach

German - 1910 - 6" L
Condition: Excellent
Estimate: \$250 - \$325

A very scarce and intricate bank, mounted to an onyx base.



Lot 59
Seated Scottie

Japanese - 1930's - 5" T
Condition: Pristine
Estimate: \$225 - \$300

A nice early spelter bank made in Japan. Scottie dogs were very popular in the 1930's. Franklin Roosevelt had his famous dog "Fala".



Lot 60
Sailor Bulldog

German - 1920's - 4.5" T
Condition: Excellent Plus
Estimate: \$150 - \$200



Lot 61
Dachshunds on Doghouse

German - 1920's - 3" L
Condition: Very Good (see description)
Estimate: \$275 - \$375

A really cute little bank. The Dachshund on top is missing most of his tail.



Lot 62
Terrier with Bandaged Eye

Trap on Bottom
Condition: Very Fine
Estimate: \$800 - \$1000

This is a very scarce version of a Terrier with Medallion Collar and trap on the bottom of the bank.

Lot 63
Spelter Bloodhound

German - 1920's - 3.25" T x 5.5" L
Condition: Pristine
Estimate: \$1400 - \$1800

We have never seen this rare, beautiful and charming German Spelter bank before. A great addition to any collection.



Lot 64
Large Seated Dachshund

German - 1920's - 4" T
Condition: Pristine
Estimate: \$500 - \$700

This is the finest painted example of this bank that we have seen.





Lot 65
Bear on Haunches

By A. C. Williams
Ravenna, OH - 1915 - 5.25" T
Condition: Excellent
Estimate: \$75 - \$125



Lot 66
Billiken Bank

By A. C. Williams
Ravenna, OH - 1915 - 4.25" T
Condition: Pristine
Estimate: \$100 - \$150

A pristine and superior example.



Lot 67
Bear Stealing Pig

British Made
Circa 1915 - 5.25" T
Condition: Excellent Plus
Estimate: \$350 - \$450

A wonderful, original, brass made example.



Lot 68
Bear Stealing Pig

By Ober Mfg. Co.
Chagrin Falls, OH - 1905 - 5.625" T
Condition: Pristine Plus
Estimate: \$900 - \$1200

A superior and bright example of this scarce bank.



Lot 69
"Teddy" Bear

American - 1915 - 4" L
Condition: Very Good
Estimate: \$100 - \$150



Lot 70
Good Luck Horseshoe

By Arcade Mfg. Co.
Freeport, IL - 1915 - 4.75" T
Condition: Pristine
Estimate: \$175 - \$225



**Lot 71
Porky Pig**
By Hubley Mfg. Co.
Lancaster, PA - 1930's - 5.875" T
Condition: Near Mint and Bright
Estimate: \$175 - \$225



**Lot 72
Mailbox Bank**
By Hubley Mfg. Co.
Lancaster, PA - 1920's - 3.75" T
Condition: Near Mint
Estimate: \$75 - \$125



**Lot 73
Fido Bank**
By Hubley Mfg. Co.
Lancaster, PA - 1930's - 5.375" T
Condition: Excellent Plus
Estimate: \$75 - \$125



**Lot 74
Yellow Cab Bank**
By Arcade Mfg. Co.
Freeport, IL - 1925 - 8" L
Condition: Fine (rubber tires replaced)
Estimate: \$375 - \$500



**Lot 75
Battleship Maine - Large**
by Grey Iron Casting Co.
Mount Joy, PA - 1897 - 6.625" L
Condition: Excellent Plus
Estimate: \$1800 - \$2200

This is an excellent example that retains its original coin trap.



Lot 76
Old Woman in the Shoe

American - 1915
9" L x 5.25" D x 6.25" T
Condition: Excellent
Estimate: \$800 - \$1000

We have never seen this amazing wooden still bank before. The coin slot is on the roof top and coins can be retrieved by opening the front door.



Lot 77
Beehive Bank - Large

Probably by Kyser & Rex
Philadelphia - 1880's - 3.375" T
Condition: Fine
Estimate: \$375 - \$500

This is a very scarce large version of the bank.



Lot 78
Apple Bank

By Kyser & Rex Company
Philadelphia - 1890
Condition: Pristine
Estimate: \$1400 - \$1800

This is a superior example of this scarce and charming bank. Made to hang on a wall to raise funds for next week's grocery bill.



Lot 79
State Bank - Second Smallest

By Grey Iron Casting Co.
Mount Joy, PA - 1897 - 3.375" T
Condition: Pristine
Estimate: \$300 - \$400

This is a very scarce building bank. Perhaps the hardest to find in the State Bank series.



Lot 80
Deposit Bank / State Bank

Grey Iron / Kenton Hardware
American - 1900 - 4.25" T
Condition: Very Fine / Pristine
Estimate: \$175 - \$225



Lot 81
State Bank - Smallest

By Kenton Hardware
Kenton, OH - 1899 - 3" T
Condition: Excellent Plus
Estimate: \$125 - \$175



Lot 82
Villa Bank - 1882 Church

By Kyser & Rex Company
Philadelphia - 1882 - 5.625" T
Condition: Very Fine
Estimate: \$175 - \$250



Lot 83
State Bank

By Kenton Hardware
Kenton, OH - 1899 - 3.875" T
Condition: Excellent
Estimate: \$125 - \$175



Lot 84
Home Savings Bank

By Shimer Toy Co.
Pennsylvania - 1899 - 5.875" T
Condition: Excellent
Estimate: \$125 - \$175



Lot 85
State Bank - 5.5" T

Probably by Kyser & Rex
Philadelphia - 1890's
Condition: Excellent
Estimate: \$300 - \$400

This is one of the hardest State banks to find.



Lot 86
"Bank"

By Grey Iron Casting Co.
Mount Joy, PA - 1897 - 5.875" T
Condition: Excellent
Estimate: \$175 - \$250



Lot 87
State Bank - Second Largest

By Kenton Hardware
Kenton, OH - 1899 - 6.875" T
Condition: Excellent Plus
Estimate: \$300 - \$400



Lot 88
State Bank - Largest Size

By Kenton Hardware
Kenton, OH - 1899 - 8.5" T
Condition: Pristine
Estimate: \$375 - \$500



Lot 89
English Villa Bank

English - 1910 - 4" T
Condition: Very Fine (see description)
Estimate: \$225 - \$300

A scarce little bank. It has a tiny chip out of the base.



Lot 90
Caisse with Spiked Finial

French - 1910 - 6" T
Condition: Excellent Plus
Estimate: \$275 - \$375

We have not seen this exact bank before.



Lot 91
Town Hall

John Harper Ltd.
English - 1910 - 3.315" T
Condition: Fine
Estimate: \$225 - \$300



Lot 92
City Bank with
Directors Room

John Harper Ltd.
English - 1902 - 4.125" T
Condition: Fine
Estimate: \$125 - \$175

This is the small letter version.



Lot 93
County Bank

John Harper Ltd.
English - 1905 - 4.25" T
Condition: Excellent Plus
Estimate: \$225 - \$300



Lot 94
City Bank with
Directors Room

John Harper Ltd.
English - 1902 - 4.125" T
Condition: Excellent
Estimate: \$125 - \$175



Lot 95
Westminster Abbey

Blunted Spires
Sydenham & McOustra
English - 1908 - 6.25" T
Condition: Excellent
Estimate: \$175 - \$250

This bank is in excellent condition with wonderful gold highlights.



Lot 96
Blackpool Tower
Sydenham & McOustra

English - 1908 - 7.25" T
Condition: Very Fine
Estimate: \$125 - \$175



Lot 97
Westminster Abbey

Pointed Spires
Sydenham & McOustra
English - 1908 - 6.375" T
Condition: Excellent
Estimate: \$175 - \$250



Lot 98
Columbia Tower
by Grey Iron Casting Co.
Mount Joy, PA - 1895 - 6.75" T
Condition: Excellent
Estimate: \$400 - \$600



Lot 99
Castle with Two Towers

John Harper Ltd.
English - 1908 - 7" T
Condition: Very Fine
Estimate: \$400 - \$600



Lot 100
Tower Bank
John Harper Ltd.
English - 1905 - 9.25" T
Condition: Very Fine
Estimate: \$300 - \$400



Lot 101
Bungalow Bank

Japped Version

By Grey Iron Casting Co.
Mount Joy, PA - 1920 - 3.75" T
Condition: Very Fine
Estimate: \$300 - \$400

This is a very scarce japped version of the bank.



Lot 102

1876 Bank - Small & Large

By H. L. Judd Mfg. Co.
Wallingford, CT - 1876
2.875" / 3.375" T
Condition: Excellent / Pristine
Estimate: \$225 - \$300

Both in Excellent to Pristine Condition with wonderful green wash highlights.



Lot 103

Midget Bank

English - 1895 - 2.625" T
Condition: A Fantastic Repaint
Estimate: \$200 - \$300

A very old and fantastic repaint.



Lot 104
Church Towers

Eddy & Stephens
American - 1880's - 6.75" T
Condition: Very Fine
Estimate: \$600 - \$800

A very scarce, desirable and delicate church bank, it retains its original trap.



Lot 105
English Church

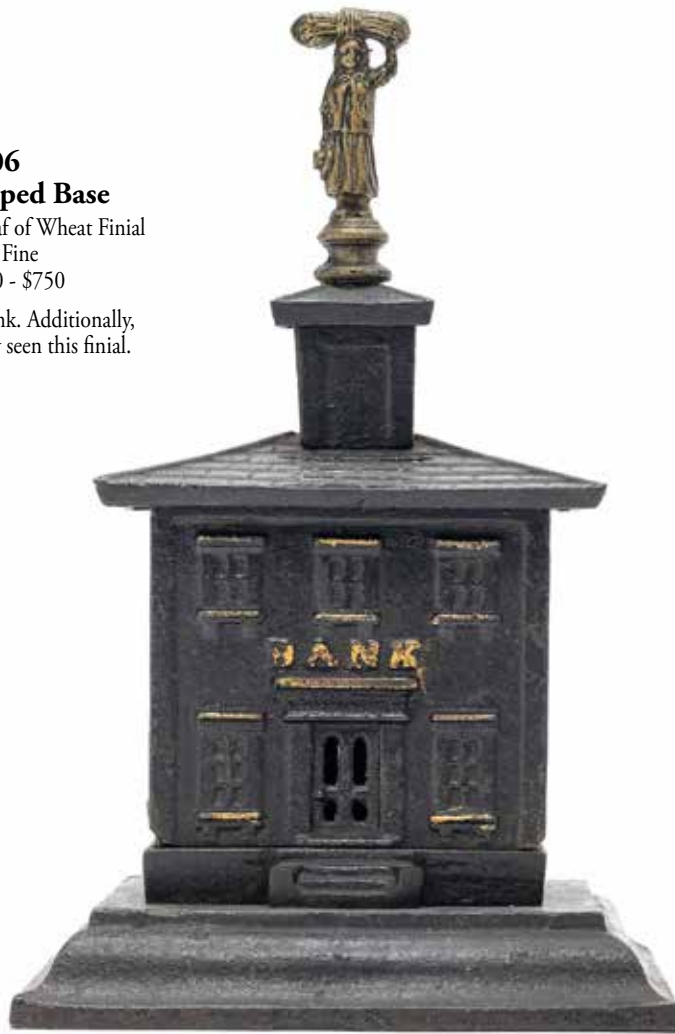
Unknown Maker
English - 1890's - 5.625" T
Condition: Excellent Plus
Estimate: \$1200 - \$1800

This is a scarce and desirable English made bank that is composed of tin with a cast iron front. It is one of the better examples we have seen.

Lot 106
Bank on Stepped Base

Woman Carrying a Sheaf of Wheat Finial
 Condition: Fine
 Estimate: \$550 - \$750

This is a very scarce bank. Additionally,
 we have not previously seen this finial.



Lot 107
Eagle Bank

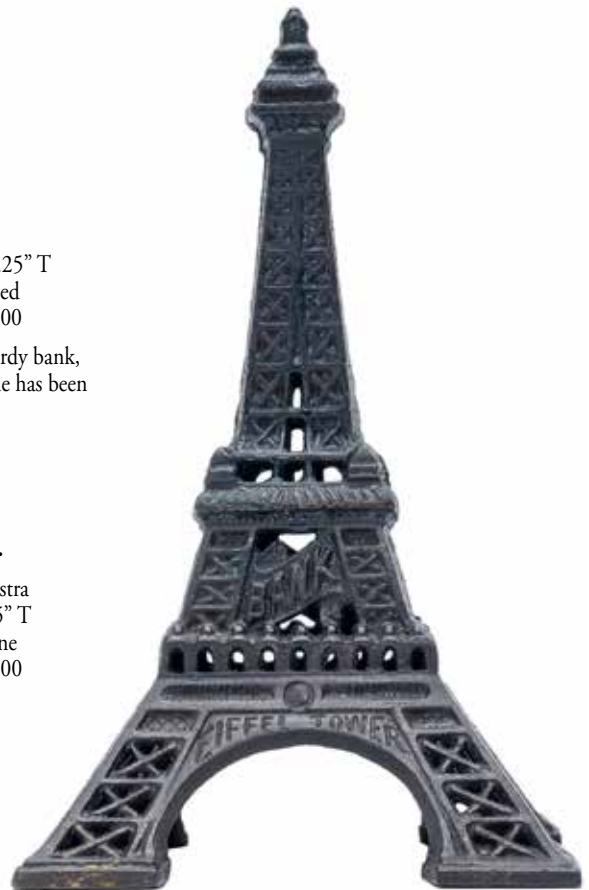
American - 1880's - 10.25" T
 Condition: Repainted
 Estimate: \$600 - \$900

This is a well made and sturdy bank,
 it is fairly rare. This example has been
 well repainted.



Lot 108
Eiffel Tower

Sydenham & McOustra
 English - 1908 - 8.75" T
 Condition: Very Fine
 Estimate: \$500 - \$700





Lot 109
City Bank with Eagle Finial

American - 1880's - 11.5" T

Condition: Overall Fine (see description)

Estimate: \$2500 - \$3500

This is an extremely impressive large scaled early bank. It is quite rare! Overall it is in Very Fine Paint Condition. There is a crack from the lower left window through the upper left window. There is also a tight 2" crack on the roof. Lastly, there is minor repaint to the roof trim.

Lot 110
Domed Mosque - Large Door

by Grey Iron Casting Co.
 Mount joy, Pa - 1905 - 3.125" T
 Condition: Very Good (needs a cleaning)
 Estimate: \$300 - \$400



Lot 111
World's Fair Administration

American - 1893 - 6" T
 Condition: Fine
 Estimate: \$400 - \$600



Lot 112
Tower Bank

By Kyser & Rex Company
 Philadelphia - 1890 - 7" T
 Condition: Very Fine (minor repaint to both doors)
 Estimate: \$300 - \$400



Lot 113
Columbia Bank - Smallest

By Kenton Hardware
Kenton, OH - 1895 - 4.5" T
Condition: Very Fine
Estimate: \$350 - \$450

The smallest Columbia Bank is rarely seen painted in this manner.



Lot 114
Columbia Bank - 2nd Smallest

By Kenton Hardware
Kenton, OH - 1895 - 5.75" T
Condition: Very Fine (missing coin trap)
Estimate: \$300 - \$400



Lot 115
Columbia Bank - 2nd Largest

By Kenton Hardware
Kenton, OH - 1895 - 7" T
Condition: Excellent
Estimate: \$500 - \$700



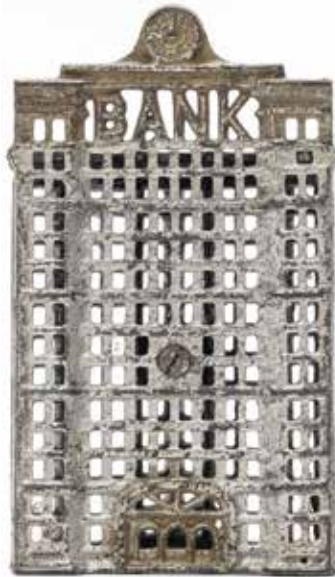
Lot 116
Columbia Bank - Largest

By Kenton Hardware
Kenton, OH - 1895 - 8.75" T
Condition: Near Mint and Bright
Estimate: \$1500 - \$2000

This is without a doubt one of the finest examples of the Large Columbia Bank that exists.



Lot 117
Skyscraper Banks
Smallest & 2nd Smallest
 By A. C. Williams
 Ravenna, OH - 1915 - 3.5" / 4.375" T
 Condition: Excellent
 Estimate: \$100 - \$150



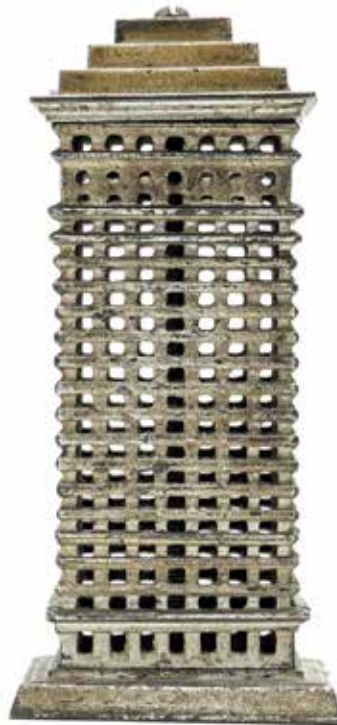
Lot 118
Triangular Building
 By Hubley Mfg. Co.
 Lancaster, PA - 1914 - 6" T
 Condition: Very Fine
 Estimate: \$375 - \$500



Lot 119
Skyscraper Banks
Largest & 2nd Largest
 By A. C. Williams
 Ravenna, OH - 1915 - 5.5" / 6" T
 Condition: Pristine
 Estimate: \$275 - \$375



Lot 120
Triangular Building
with Two Clocks
 By Hubley Mfg. Co.
 Lancaster, PA - 1914 - 6" T
 Condition: Pristine
 Estimate: \$900 - \$1200



Lot 121
Tiered High Rise - Large
 By Kenton Hardware
 Kenton, OH - 1915 - 5.875" T
 Condition: Very Good
 Estimate: \$175 - \$250



Lot 120
Triangular Building
Reverse Side

This is probably a unique bank, combining the front of a Triangular Building with the rear of a modified Skyscraper with clock bank. The skyscraper with clock was made without its turrets on the rooftop. The bank is in pristine, all original, condition.



**Lot 122
New York Bank**

English - 1890's - 5.875" T
Condition: Very Fine (needs a cleaning)
Estimate: \$700 - \$900

New York Banks are seldom found and rarely in such nice condition. It's gold with dark blue highlights.



**Lot 123
Gingerbread House**

French - Circa 1915
Condition: Fine
Estimate: \$500 - \$700

A scarce bank that retains its original keylock trap.



**Lot 124
Bird on Roof Bank**

European - 1895 - 6.5" T
Condition: Excellent Plus
Estimate: \$1500 - \$2000

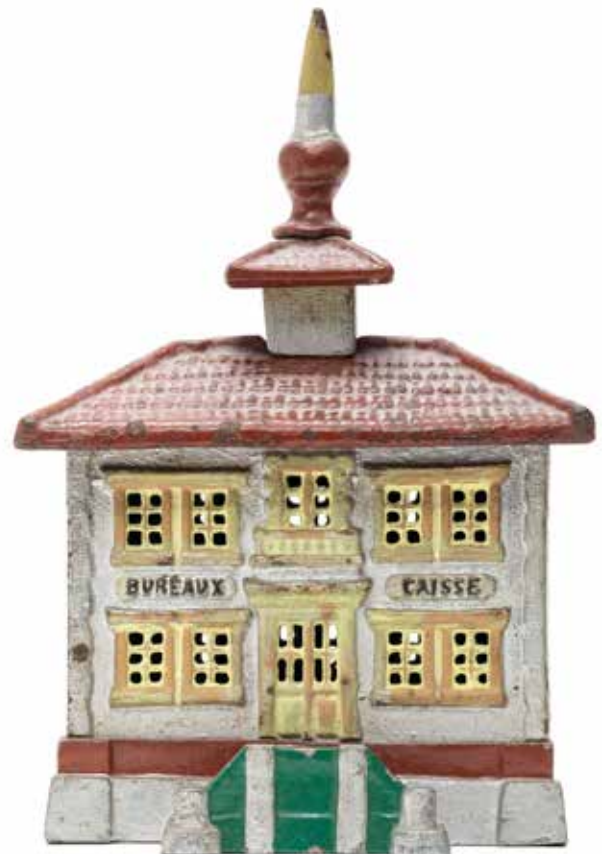
This is a really scarce cast iron bank, probably French, in outstanding condition.



**Lot 125
Chalet Bank**

Probably French - 1920 - 5.25" T
Condition: Excellent Plus
Estimate: \$375 - \$500

This is a very scarce, brightly painted bank that is made of aluminum or like alloy.



**Lot 126
Bureaux Caisse - Iron**

French - 1915 - 9" T
Condition: Excellent
Estimate: \$400 - \$600

The scarce iron version in bright paint with a spike atop it.



Lot 127
State Bank - Straight Letters

By Kyser & Rex Company
Philadelphia - 1890's - 5.25" T
Condition: Excellent Paint (twist pin replaced)
Estimate: \$125 - \$175

This bank with dark japanning has a replaced twist pin.



Lot 128
Roof Bank - Multicolor

By J. & E. Stevens Company
Cromwell, CT - 1887 - 5.5" T
Condition: Very Fine
Estimate: \$375 - \$500

A scarce multicolor example in bright paint.



Lot 129
Roof Bank

By J. & E. Stevens Company
Cromwell, CT - 1887 - 5.5" T
Condition: Excellent
Estimate: \$100 - \$150



Lot 130
Roof Bank

By Grey Iron Casting Co.
Mount Joy, PA - 1905 - 5.25" T
Condition: Excellent Plus
Estimate: \$150 - \$200



Lot 131
Villa Bank - 1882 Church

By Kyser & Rex Company
Philadelphia - 1882 - 5.875" T
Condition: Fine
Estimate: \$350 - \$450

These banks are scarce in multicolor paint.



Lot 132
Finial Bank

By Kyser & Rex Company
Philadelphia - 1890 - 5.75" T
Ex - Rich Garthoeffner
Condition: Pristine
Estimate: \$600 - \$800

This is a far superior example of this delicate Kyser & Rex bank.



Lot 133
Town Hall Bank

By Kyser & Rex Company
Philadelphia - 1882 - 4.625" T
Ex - Rich Garthoeffner
Condition: Excellent Plus
Estimate: \$700 - \$900

This example in Excellent Condition with a tiny casting flaw in its roof.



Lot 134
City Bank - Smallest

By J. & E. Stevens Company
Cromwell, CT - 1875 - 3" T
Ex - Rich Garthoeffner
CIBB #215-d
Condition: Excellent Plus
Estimate: \$800 - \$1000

A charming little bank. Pictured in Robert Peirce's seminal book
"Cast Iron Building Banks". (CIBB)



Lot 135
Crown Bank on Legs - Small

American - 1870's - 4.625" T
Condition: Excellent
Estimate: \$800 - \$1000

A very scarce and colorful bank that is in Excellent Plus paint condition
(the roof is very good).



Lot 136
Westside Presbyterian Church

American - 1916 - 3.75" T
Condition: Near Mint
Estimate: \$300 - \$400

A superior and bright example.



Lot 137
Columbia Bank - Smallest

By Kenton Hardware
Kenton, OH - 1895 - 4.25" T
Ex - Robert Peirce
Condition: Pristine
Estimate: \$700 - \$900

This is a superior example of an electroplated version of the bank.



Lot 138
Columbia Bank - 2nd Largest

By Kenton Hardware
Kenton, OH - 1895 - 7.5" T
Ex - Robert Peirce
Condition: Excellent Plus
Estimate: \$800 - \$1000

This is an Excellent Plus electroplated example of the bank.



Lot 139
Masonic Temple - Cast Iron

American - 1892 - 6" Tall
Condition: Pristine (see description)
Estimate: \$1800 - \$2200

This is a very rare cast iron version of the Masonic Temple and Fort Dearborn in Chicago, Illinois. The bank was probably made in advance of the World's Columbian Exposition held in Chicago in 1893. The bank depicts 60 years of Chicago history. Fort Dearborn in 1832 and the Masonic Temple in 1892. The bank with a pristine patina, but has a 1/2" chip in the upper cornice.



Lot 140
Iron Masters House on Legs

By Kyser & Rex Company
Philadelphia - 1884 - 4.5" T
Ex - Rich Garhoeffner
Condition: Pristine
Estimate: \$2000 - \$3000

This is a very scarce bank. It's in Pristine Condition, but lacks its coin trap.

Lot 141
Chicago Bank

John Harper Ltd.
 English - 1893 - 6.375" T
 Condition: Very Fine
 Estimate: \$2000 - \$3000

John Harper rendition of the
 Administration Building at the
 Columbian World Exposition held
 in Chicago in 1893. This is a very
 scarce and desirable building bank.
 It retains its original flag.



Lot 143
Independence Hall Tower

By Enterprise Mfg. Co.
 Philadelphia - 1876 - 9.5" T
 Ex - Donal Markey Collection
 Condition: Near Mint and Bright
 Estimate: \$1500 - \$2000

This is a far superior example of the bank.
 It is definitely one of the finest known
 examples.



Lot 142
Fidelity Trust Vault

by J. Barton Smith
 Philadelphia - 1890 - 6.5" T
 Condition: Excellent Plus
 Estimate: \$375 - \$500

This is a wonderful example of the bank. It retains about 95%
 of its paper label clock face.





Lot 144
Boston State House - Large

By Smith & Egge
American - 1880's - 6.75" Tall
Ex - Donal Markey Collection
Condition: Pristine Plus
Estimate: \$18,000 - \$22,000

This is the finest known specimen of the large version of the "Boston State House". It is in Pristine Plus and bright condition. It retains its original coin trap. A chance to add a museum piece to your collection.



Lot 145
Old South Church - Large

American - 1880 - 13" Tall
Condition: An Amazing Old Repaint
Estimate: \$12,000 - \$16,000

The large version of the Old South Church is one of the Holy Grails for building bank collectors. There are perhaps four or five known examples. This one surfaced about ten years ago from descendants of the original owner. The bank was repainted many years ago. The heir that previously consigned it said it had been in his family since about 1930 and was painted in this manner when it was received. It has a very crusty old surface and looks amazing.



Lot 146
Bank with Pedestal

Probably French - 1890's - 7.25" T

Condition: Near Mint

Estimate: \$800 - \$1000

We have never seen this intricate brass bank before. The windows resemble those used on previously seen Bank on Stepped Base banks, which are considered to be French made.

Lot 147
Bank on Stepped Base

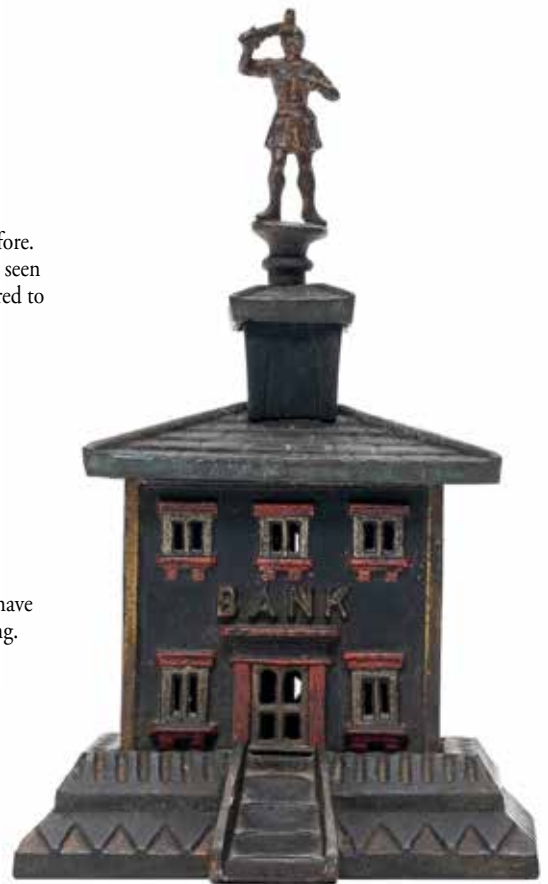
with Gladiator Finial

French - 1890's - 9" T

Condition: Excellent Plus

Estimate: \$800 - \$1200

This is the finest example of this bank that we have seen. It is dirty and in need of a good cleaning.



Lot 148
Bureaux Caisse - Cast Iron

French - 1910 - 9.5" T

Condition: Pristine and Bright

Estimate: \$900 - \$1200

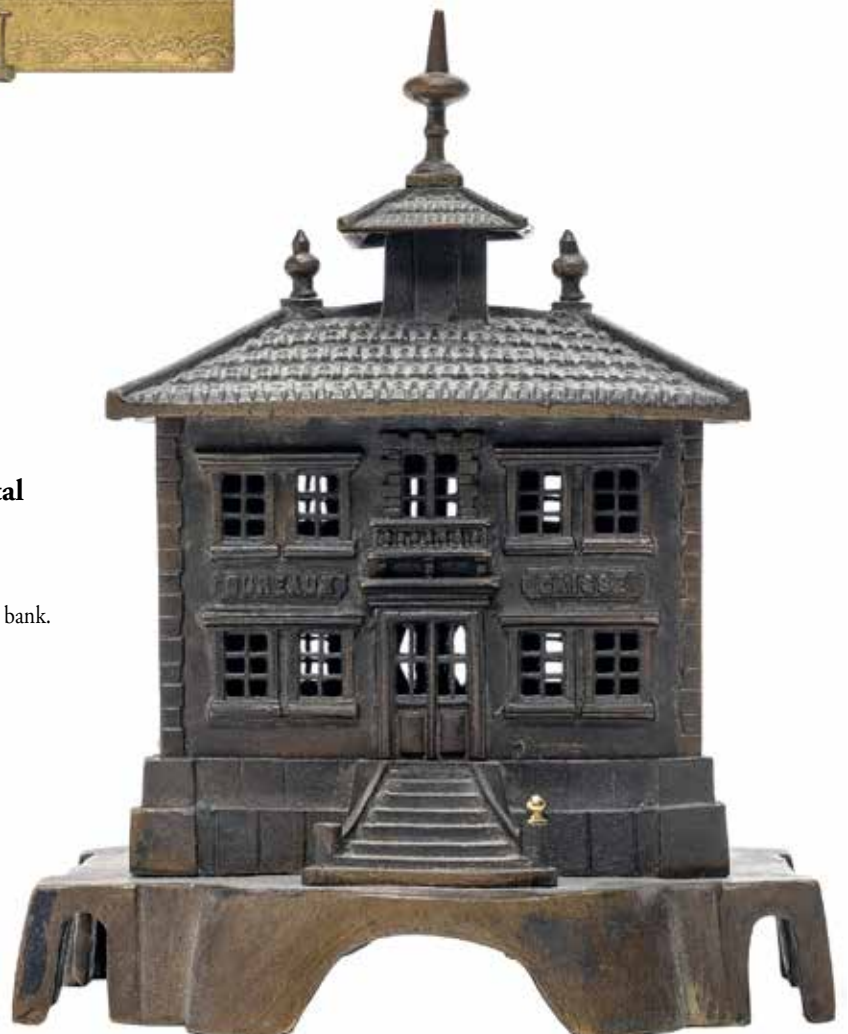
This is without question the finest painted example of the bank that we have seen.



Lot 149
Four Story Mansion

with Music Box
European - 1915 - 9.5" T
Condition: Pristine Plus
Estimate: \$2000 - \$3000

This is one of the finest European building banks that we have ever seen. By utilizing brass as the medium, the designer is able to get much finer details. The music box appears to be overwound and not working.



Lot 150
Bureaux Caisse on Pedestal

French - 1910 - 11" T
Condition: Excellent Plus
Estimate: \$800 - \$1000

An impressive large scaled Bureau Caisse bank.
Made of brass.



Lot 151
The Copper House

European - 1920/1930's
5" W x 7.25" D x 7.25" T
Condition: Pristine
Estimate: \$350 - \$450

This cute house is made of copper. The front door is a key lock trap.



Lot 152
Folk Art Wooden Church

American - 1905 - 8.25" T
Condition: Pristine
Estimate: \$600 - \$800

This American Folk Art made bank is beautifully carved and detailed. It has a wonderful patina.

Lot 153
Folk Art Cottage
with Wraparound Porch

American - Circa 1920's
7.625" W x 7.625" D x 7" T
Ex - Richard Garthoeffner
Condition: Excellent Plus
Estimate: \$700 - \$900



The details for this brightly painted folk art bank are amazing. The shrubbery around the porch is charming.



Lot 154
Cottage by the Seashore

American - 1920's
9" W x 10.25" D x 16" T
Condition: Pristine
Estimate: \$1400 - \$1800

This is a beautifully executed wooden bank.
The windows are made to simulate glass panes
and the roof is painted with shingles. A fun
and attractive bank.

Lot 155
Wooden Cabin

European - Circa 1910
5.5" W x 9" D x 5" T
Condition: Excellent Plus
Estimate: \$500 - \$700

The bank is carved to simulate a kind of Log Cabin.
Probably made in Europe circa 1910





Lot 156
The Traders Bank

Toronto, Canada - 1891
Condition: Very Fine (no insert)
Estimate: \$600 - \$900

The Traders Bank opened for business in 1885. In 1891 A. E. Jarvis registered a toy bank for production in the shape of the Bank Building. It typically contains an insert for which to save your coins (this bank missing the insert). The toy bank would be taken to the actual bank to make a deposit.



Lot 157
Home Savings Bank

Multicolor Version
American - 1890's - 10.875" T
Condition: Excellent Plus
Estimate: \$750 - \$950

This is a fantastic multicolor example of the bank. It is missing its tin insert.



Lot 158
Chester Gump Cart
 By Arcade Mfg. Co.
 Freeport, IL - 1925 - 7.25" L
 Condition: Pristine
 Estimate: \$350 - \$450



Lot 159
Sheep Drawn Gig
 By Harris Toy Co.
 Toledo, OH - 1895 - 7" L
 Condition: Pristine
 Estimate: \$400 - \$600

A superior and bright example of this toy.



Lot 160
Single Horse Gig
 Kenton, OH - 1905 - 10" L
 Condition: Excellent
 Estimate: \$500 - \$700



Lot 161
Dog Cart
 By Dent Hardware
 Fullerton, PA - 1910 - 6.5" L
 Condition: Pristine
 Estimate: \$300 - \$400



Lot 162
Sulky
 By Welker & Crosby
 New York - 1880's - 8.5" L
 Condition: Very Fine
 Estimate: \$550 - \$750

Welker & Crosby was only in business a few years, their toys tend to be scarce.

Lot 163
Brewery/Dray Wagon

By Wilkins Hardware
 Keene, NH - 1910
 Condition: Good
 (horses need to be attached front hitch)
 Estimate: \$350 - \$450



Lot 164
Single Horse Ice Wagon

By Hubley Mfg. Co.
 Lancaster, PA - 1910 - 15" L
 Condition: Fine (some in-paint to wheels)
 Estimate: \$375 - \$500

Lot 165
Two Horse Doctor's Gig

By Wilkins Hardware
 Keene, NH - 1895 - 13" L
 Condition: Fine (needs a clean)
 Estimate: \$300 - \$400
 Made of cast iron with a tin vehicle.



Lot 166
Happy Hooligan Police Patrol

By Kenton Hardware
 Kenton, OH - 1910 - 19" L
 Condition: Very Good (driver is a recast)
 Estimate: \$800 - \$1200

A classic comic-themed toy made by
 Kenton Hardware circa 1910.



Lot 167
Two Horse Pumper

By Dent Hardware
 Fullerton, PA - 1910 - 21" L
 Condition: Very Fine
 Estimate: \$500 - \$700



Lot 168
Three Horse Pumper

By Wilkins Hardware
 Keene, NH - 1895 - 21" L
 Condition: Very Fine (rear figure restored)
 Estimate: \$600 - \$800

This is the second largest pumper that Wilkins made. The rear figure is original, but restored.



Lot 169
Two Horse Clockwork Pumper

By Ives, Blakeslee Company
 Bridgeport, CT - 1890's
 Condition: Fine (see description)
 Estimate: \$800 - \$1000

This is a very scarce clockwork version of this iconic Ives toy. Minor restoration throughout and both figures are reproductions. The mechanism works well.



Lot 170
Royal Circus Calliope Wagon

By Hubley Mfg. Co.
 Lancaster, PA - 1906 - 16" L
 Condition: Fine (reds mostly repainted)
 Estimate: \$800 - \$1000

The toy has some repaint, mostly to the reds.



Lot 171
Royal Circus Farmer Van

By Hubley Mfg. Co.
 Lancaster, PA - 1906 - 15.75" L
 Condition: Fine (minor repaint to tailgate)
 Estimate: \$1000 - \$1500

Original rear tailgate is about 30% restored.



Lot 172
Royal Circus Bear Cage

By Hubley Mfg. Co.
 Lancaster, PA - 1906 - 15.5" L
 Condition: Very Fine (slide gate is replaced)
 Estimate: \$500 - \$700



**Lot 173
Hansom Cab**

By Pratt & Letchworth
Buffalo, NY - 1890 - 12.5" L
Condition: Near Mint (one side lamp missing)
Estimate: \$1500 - \$2000

Recently found inside an attic trunk in Philadelphia. It is a superior and bright, certainly one of the finest known examples. It is missing one side lamp.



**Lot 174
Santa Sleigh**

By Hubley Mfg. Co.
Lancaster, PA - 1906 - 15" L
Condition: Pristine Plus
Estimate: \$4000 - \$5000

A superior and very bright example. Santa Claus is virtually mint.



**Lot 175
Articulated Candy Scale**

By Ives, Blakeslee Company
Bridgeport, CT - 1880's - 9.5" L
Condition: Pristine
Estimate: \$2500 - \$3500



Lot 176
New York Paddlewheel Boat

By Harris Toy Company
 Toledo, OH - 1895 - 15" L
 Condition: Pristine
 Estimate: \$2000 - \$3000

A superior and bright example.



Lot 177
Racing Scull

By Wilkins Hardware
 Keene, NH - 1895 - 9" L
 Condition: Excellent
 Estimate: \$1500 - \$2000

This is the scarce small version of the toy with star shaped wheel inserts.



Lot 178
Model A Sedan

By Arcade Mfg. Co.
 Freeport, IL - 1925 - 6.75" L
 Condition: Excellent
 Estimate: \$275 - \$375



Lot 179
Large Engine & Tender

By Carpenter Toy & Hardware Co.
 New York - 1885 - 22.5" L
 Condition: Excellent (see description)
 Estimate: \$1800 - \$2200

This is an impressive large scaled cast iron floor train. Overall in Excellent Condition; the cab roof maybe repainted and a tiny piece of boiler front (overall 90 - 95% original paint).



Lot 180
Waddler Bell Toy

By Gong Bell Mfg. Co.
Connecticut - 1895 - 6" L
Condition: Very Fine
Estimate: \$700 - \$900



Lot 181
Double Elephants Bell Toy

By James Fallows Company
Philadelphia - 1885 - 6.25" L
Condition: Very Good
Estimate: \$350 - \$450

A scarce version with two elephants rather than one. The platform is blue paint. Missing string to turn the bell chimes.



Lot 182
Ram Bell Toy

By Merriam Toy Company
Connecticut - 1880 - 7.5" L
Condition: Excellent Plus Overall
Estimate: \$1400 - \$1800

This is an exceptional early American Tin bell toy on a rocking base. The Ram is Pristine, the base in very good condition.



Lot 183
Seesaw Bell Toy

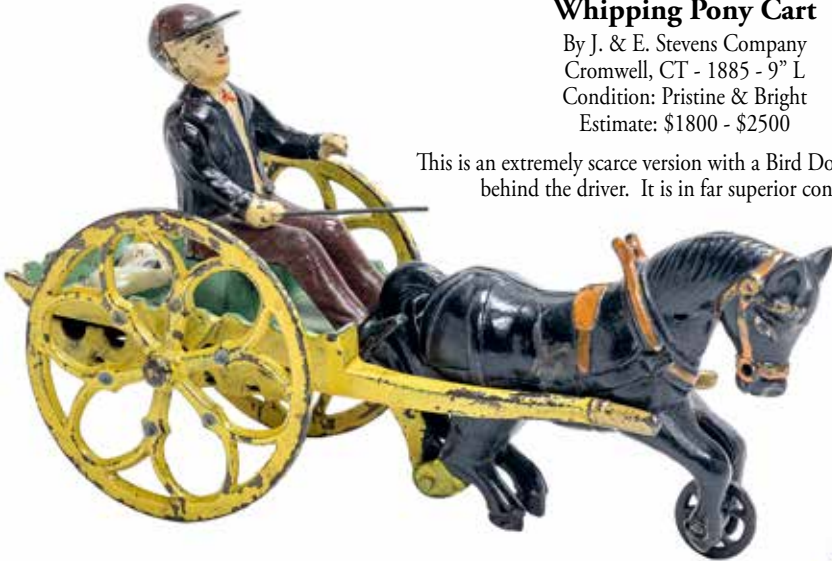
By Gong Bell Mfg. Co.
Connecticut - 1880's - 7.5" L
Condition: Very Fine (see description)
Estimate: \$800 - \$1000

Both figures are original, however, the girl's hat and face are restored.

Lot 184
Whipping Pony Cart

By J. & E. Stevens Company
 Cromwell, CT - 1885 - 9" L
 Condition: Pristine & Bright
 Estimate: \$1800 - \$2500

This is an extremely scarce version with a Bird Dog laying down behind the driver. It is in far superior condition.



Lot 185
Daisy Bell Toy

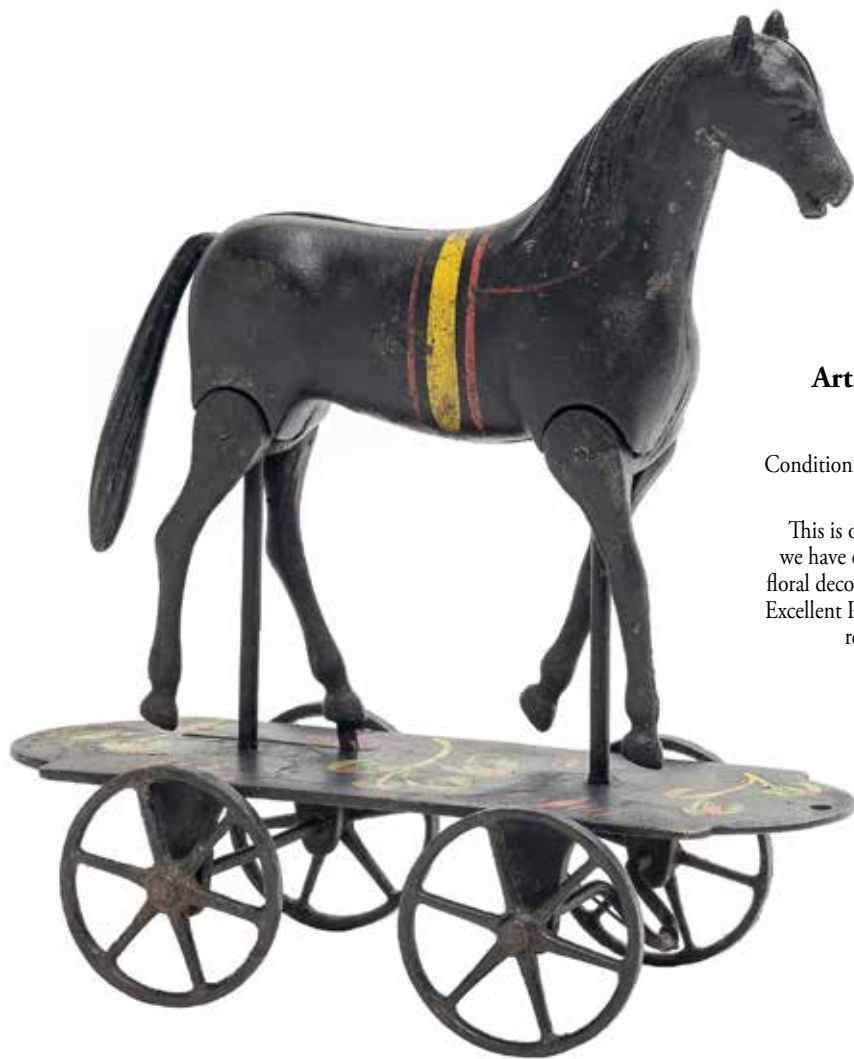
By Gong Bell Mfg. Co.
 Connecticut - 1890 - 8.25" L
 Condition: Very Fine
 Estimate: \$750 - \$950



Lot 186
Charity Swing Bell Toy

By J. & E. Stevens Company
 Cromwell, CT - 1890 - 9.5" L x 9.5" T
 Condition: Very Fine
 Estimate: \$1500 - \$2000

An intricate and delicate bell toy by famed toy maker J. & E. Stevens of Connecticut. A small doll can be put into the chair if desired.



Lot 187
Articulated Horse on Platform

By Ives, Blakeslee Company
 Bridgeport, CT - 1880's - 9" L
 Condition: Excellent Plus (tiny repaint to one red stripe)
 Estimate: \$2500 - \$3500

This is one of the prettiest examples of this toy that we have ever seen. The base is painted with gorgeous floral decorations of red, yellow and green. The toy is in Excellent Plus Condition with a tiny 3/4" in-paint to one red saddle strip. A true show stopper.



Lot 188
"City Transfer" Wagon

By Kenton Hardware
 Kenton, OH - 1905
 Condition: Very Fine
 Estimate: \$2500 - \$3500

A very scarce oversized toy made by Kenton Hardware. Made of cast iron, tin and paper. There are probably less than 10 known examples of this toy and this is one of the finest.



Lot 189
"Duke" Train Engine and Passenger Car

Made by W. S. Reed Company
 Leominster, MA - Circa 1880's - 37" L
 Condition: Fine Overall (see description)
 Estimate: \$900 - \$1200

The toy is made of paper litho and wood. The engine is missing its paper litho on the far side of the cab.
 The coach's roof is glue repaired down the middle (inside, so hidden).



Lot 190
Noah's Ark "Sunday" Toy

German - 1880 - 19" L
 Condition: Excellent
 Estimate: \$2250 - \$2750

This beautiful Noah's Ark, typically played with on Sundays to supplement Bible teachings is 19" long, retains about 50 animals, mostly paired and several human figures.



Lot 191
Ding Dong Bell

Made by W. S. Reed Company
 Leominster, MA - 1880's
 14.5" W x 11.5" T
 Condition: Very Fine (two knobs missing)
 Estimate: \$300 - \$400

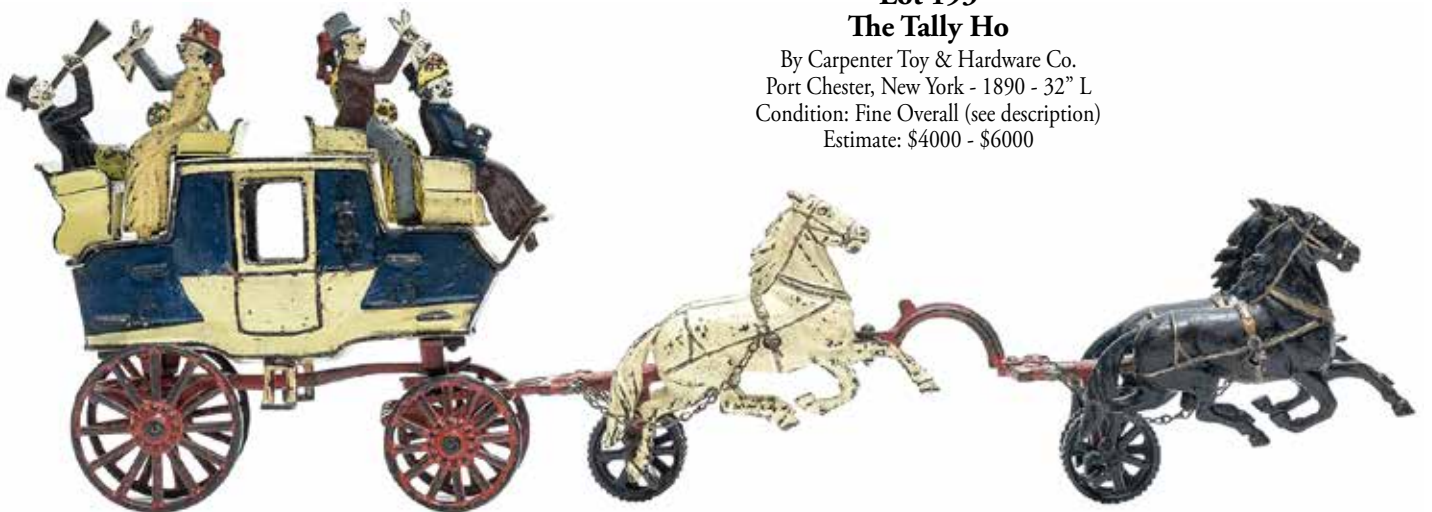
A wonderful paper litho toy depicting children at play. Turn the knobs and little vignettes pop up. It is in wonderful condition, but is missing two knobs.

Lot 192
Four Seat Brake
 By Hubley Mfg. Co.
 Lancaster, PA - 1906 - 31" L
 Condition: Fine (see description)
 Estimate: \$3000 - \$4000



A mantlepiece, all four white horses are repainted. It retains six original figures; however, three are repainted. Two figures are replaced.

Lot 193
The Tally Ho
 By Carpenter Toy & Hardware Co.
 Port Chester, New York - 1890 - 32" L
 Condition: Fine Overall (see description)
 Estimate: \$4000 - \$6000



This is one of the most sought-after horse drawn toys. All the figures are replacements. The white horses and their hitch are repainted. Also one horse needs a front hoof reattached. A true show stopper, albeit with problems.



Lot 194
Dancing Monkey Mechanical Toy

By Ives, Blakeslee & Company
 Bridgeport, Ct. - Circa 1880
 Condition: Very Fine Quality & Works Well
 Estimate: \$1750 - \$2250

Charles Darwin's masterful theoretical opus on the Origin of Species was published in 1859. From that time onwards, monkeys, chimpanzees and other primates were often featured in the product line of many early American toy makers.

Lot 195
Skeleton Mechanical Jig Dancer

By Ives, Blakeslee & Company
 Bridgeport, Ct. - Circa 1880
 Condition: Pristine
 Estimate: \$4000 - \$6000

On one level, Ives produced a decent anatomical representation of a skeleton that appears to be merely eerie and comical. However, Ives marketed this dancing wonder as the McGinty Skeleton, and therefore, it must be considered in a pejorative context as well.



Lot 196
Scotsman Mechanical Dancing Toy

Made by Automatic Toy Works
 Connecticut - Circa Early 1870's
 Condition: Pristine Original
 Estimate: \$1250 - \$1750

This toy was made almost expressly for export to the United Kingdom. Because the Scots and the Irish were seen by the English as inferior, many notable toy makers unfortunately catered to the demand for this type of racially insensitive plaything.



Lot 197
Lady Churning Butter

By Ives, Blakeslee & Company
 Bridgeport, Ct. - Mid 1880's - 10.5" T
 Ex - Bernard Barenholtz Collection
 Condition: Fine (brass face only fair)
 Estimate: \$1250 - \$1750

Lot 198
Monkey Butter Churner

By Ives, Blakeslee & Company
 Bridgeport, Ct. - Mid 1880's - 10.5" T
 Condition: Very Fine
 (missing his hat)
 Estimate: \$2000 - \$3000

Depictions of monkeys dressed as human beings became very prevalent as Darwinian theory gained ascendancy. This particular toy has a genuine quaintness to it. The toy works well, however, he is missing his paper mache hat.



Lot 199
Brower's Patented Plantation Dancer

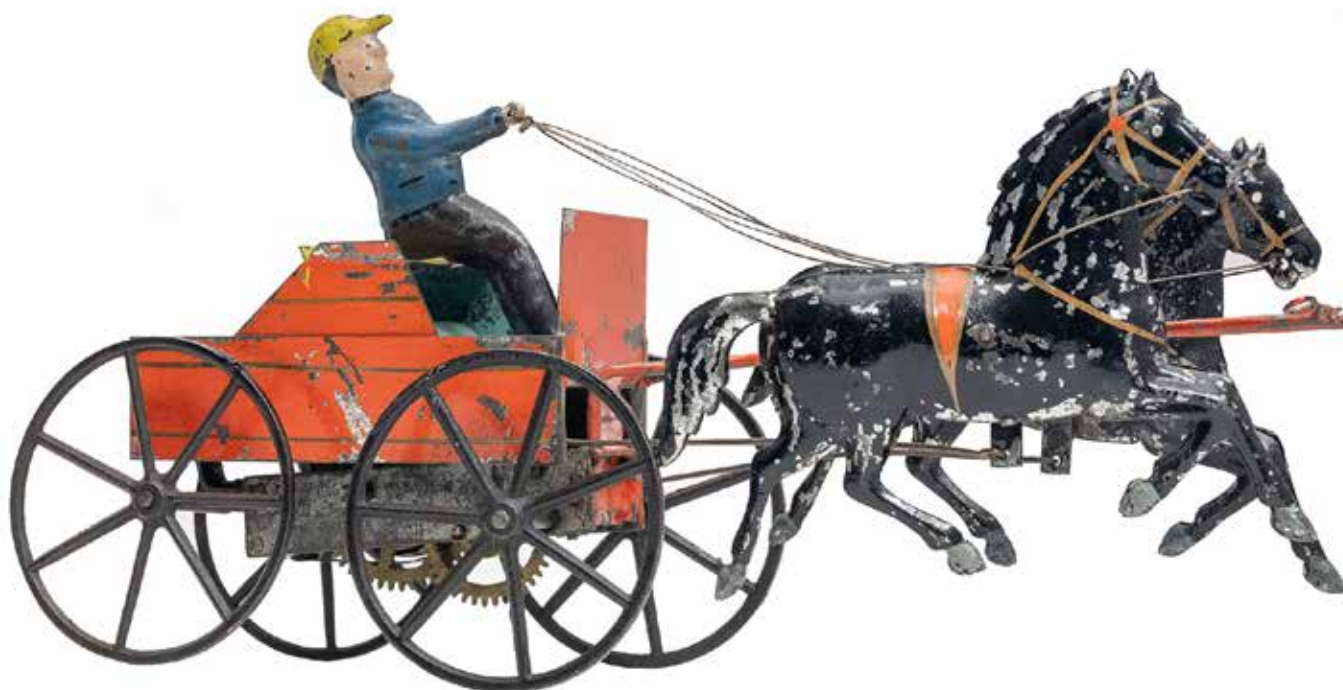
Unknown Manufacturer
 American - Mid 1880's
 Condition: Very Good
 (clothes somewhat tattered and darkened)
 Estimate: \$1250 - \$1750

Papier-mâché, wood, paper, tin, fabric and a brass mechanism all figure into the construction of this remarkable toy. It is one of the few playthings from the period that is convincingly set into a real social context. When the toy is wound up, the operator can watch as the young man performs his soft shoe shuffle in front of the cabin.



Lot 200
Large Mechanical Gig
 Merriam Company
 Connecticut - Circa 1880's - 16" L
 Condition: Very Fine (see description)
 Estimate: \$3000 - \$4000

This is a very superior example of this toy. The gig color is an interesting light French Blue, which is typically associated with the toy production of Merriam Mfg. There is only very slight restoration to the front dash and seat of the toy. It works very well.



Lot 201
Double Gallopers Buckboard

By Ives, Blakeslee & Company
 Bridgeport, Ct. - Circa 1880 - 11.5" L
 Ex - Tom Anderson Collection
 Condition: Excellent Plus original figure about 50% restored)
 Estimate: \$2500 - \$3500

Many collectors believe that Ives, Blakeslee made the finest and most realistic looking clockwork toys at the end of the 19th century. This charming buckboard is certainly no exception. We find horses that gallop up and down in opposing motions and a wheelbase that can be changed so the carriage can run in a straight line or a broad circle. All-in-all, a very appealing old toy.



Lot 202
Cuzner Trotter Mechanical Toy
Rare Version - Gig with Sloped Back
 Made by Ives, Blakeslee & Company
 Bridgeport, Ct. - Circa Early 1880's - 12" L
 Very Good Condition and Patina
 Estimate: \$3000 - \$4000

Cuzner's realistic "trotter" represents one of the most iconic clockwork toys of the late nineteenth century. The complex engineering which was required to create the simulated running action of the horse's legs has no equal in the history of toy production. The toy measures 12" long and is still in great condition for a toy from this period. The toy works well.



Lot 203
Important Mechanical Doctors Buggy

Made by Ives, Blakeslee & Company
 Bridgeport, Ct. - Circa Mid 1880's - 17" L
 Provenance: Louis Hertz Collection
 Tom Anderson Collection
 Condition: Excellent (original tin hat is repainted)
 Estimate: \$5000 - \$7000

These magnificent and elegant mechanical wonders were frequently very costly, and therefore, they were the playthings of children from prosperous homes only. In fact, this impressive beauty was a whopping \$3.00 at the store, a vast sum of money in that period. It measures 17" long and includes a seldom found "whipping" action for the figure's right arm. The toy works very well.



Lot 204
Mechanical Tricyclist

By Stevens & Brown Company
 Connecticut - Circa 1880 - 8.5" T
 Condition: Very Fine Overall
 (head repainted and jacket replaced)
 Estimate: \$900 - \$1200

Stevens & Brown made this toy with both boy and girl figures. The heads were made of pressed macerated paper and they could be painted as blondes, brunettes or with black hair. When it first appeared in the 1870's, it must have made a huge sensation because they were wildly popular with children over a long period of time. When given a vigorous winding, these toys can run on the parlor floor in a meandering pattern.

Lot 205
Woman Pushing Perambulator
a.k.a. the Goodwin Patent Doll

By Stevens & Brown Company
 Connecticut - Circa 1870's
 Condition: Very Fine Overall
 (face partially repainted)
 Estimate: \$900 - \$1200



This was another iconic offering from the prestigious firm of Stevens and Brown. And it was just as popular. The earliest iteration of this toy used a painted tin buggy. The designers were able to lighten the load on the physical mechanics of the toy by switching to a wooden body for the buggy. This is a super example.



Lot 206
Young Queen Victoria
Autoperipatetikos Doll
 Created by Enoch Rice Morrison
 American - Circa Mid 1860's - 10" T
 Condition: Excellent Plus with Box
 Estimate: \$1000 - \$1500

At seventeen letters, "autoperipatetikos" must be the longest appellation ever assigned to a toy. Translated from the Greek, it means "self-propelled". This version of Morrison's magical walking doll was sold and distributed as a portrait of young Victoria. It is the rarest and most historically important from his toy doll studio.



Lot 208
Young Lady Piano Player
 Designed by Jerome Secor
 For Ives, Blakeslee Company
 Bridgeport, Ct. - Circa 1880
 11" Wide x 8.5" Tall
 Condition: Pristine and Works Very Well
 Estimate: \$5500 - \$7500

Secor was an accomplished inventor and entrepreneur. Shortly after the Civil War, he moved his family to Bridgeport, by chance to the home adjacent to Edward Ives. From the very beginning, they were a great match; the eccentric genius inventor and the toy tycoon. The older man encouraged Secor to set his brilliant mind to the task of designing toys. Secor delivered in spades, producing the most amazing mechanical toys, including the Freedman's Bank. These toys were extremely expensive to produce, consequently few were ever made. She works well.



Lot 207
The Crawling Baby
 By Ives, Blakeslee & Company
 Bridgeport, Ct. - Circa 1880's - 13" L
 Ex - Gary Smith Collection
 Condition: Pristine Plus with the Box
 Estimate: \$1500 - \$2000

The lace & ribbon costuming for this toy are nothing short of extraordinary. When the toy is wound up, you place her on the floor and she crawls forward, moving her hands and legs with great verisimilitude. The toy works well.



Lot 209
Oversize Team of Horses

By James Fallows Company
Philadelphia - 1885 - 14" L x 14" T
Ex - Perelman Toy Museum
Condition: Excellent Plus
Estimate: \$3750 - \$5000

The horses resemble small 19th Century weathervanes.
The toy was pushed from above using a stick. It is in superior and bright condition.

Lot 210
Horse & Jockey

By George Brown Company
Forestville, Ct. - 1880's - 14" L
Condition: Very Fine (see description)
Estimate: \$800 - \$1000

An impressive, large scaled toy. Overall in Very Fine Condition, however, all reds and his face have been restored.





Lot 211
Equestrian and Running Dog Platform Toy

Collaboration of Merriam & George Brown

Both Makers in Connecticut - Circa 1880 - 6.75" L

Provenance: Tom Anderson Collection

Gail Furman Collection

Condition: Excellent Quality (Minor Retouching)

Estimate: \$1750 - \$2250

Lot 212
American Tin Trolley Car

Hull & Stafford Company

Clinton, Ct. - Circa 1875 - 11" L

Condition: Fine (see description)

Estimate: \$1750 - \$2250



As the U. S. Centennial approached, Hull & Stafford often outfitted their horses with flags rising from their necks. This is an easy way to help identify the toymaker. The horses are about 30% restored and the flags fully restored.

Lot 213
Exquisite Tin Hose Reel Toy

By George Brown Company

Forestville, Ct. - Circa 1880 - 6.75" L

Provenance: Gary Smith Collection

Condition: Exceptional All Original

Estimate: \$5500 - \$7500

Within the collecting category of hand-painted American tin toys, fire apparatus is considered to be the most rare and significant. They come to market only very very occasionally. This magnificent miniature hose reel was purchased by Gary Smith in the 1980's from an extremely reputable dealer/collector. It is illustrated in the George Brown Sketchbook. It is the only known specimen of this rare toy.





Save the Date

JUNE 26, 2021

**THE PAUL COLE JR.
COLLECTION**

**OF STILL AND MECHANICAL BANKS,
ANIMATED CAP GUNS, AND
AMERICAN TIN TOYS - PART I**





Lot 214
"Reed's Band Chariot"

By W. S. Reed Company
 Leominster, MA - 1880 - 25" L
 Condition: Excellent Plus
 Estimate: \$4000 - \$6000

This is perhaps the most impressive wood and paper lithographed toy that W. S. Reed Company ever made. Only a couple of handfuls of these toys still exist and this is one of the finest! It retains 11 of its original figures. A chance to add a museum quality piece to your collection. One original horse head had to be reattached at some point in the toys life and a tiny piece of one horse hoof is missing.



Lot 215
Large Express Wagon

Possibly Merriam Company
 Connecticut - 1880's - 25" L
 Condition: Very Fine (see description)
 Estimate: \$3000 - \$4000

This is an impressive, large scaled, American tin toy in overall Very Fine Condition.
 The original figure has been restored and about 50% of the reds enhanced.



Lot 216
Doll with Fan Automata

European - 1905 - 13.25" T
Condition: Very Fine
Estimate: \$500 - \$700

When operated she turns around and dances to music.
She works well and her face is hand-painted.

Lot 217
Doll with Pocket Watch & Crop Automata

European - 1905 - 14.5" T
Condition: Very Fine
Estimate: \$500 - \$700

Similar to the previous lot and probably the same maker. She turns around to music when operated.



Lot 218
Pierot Dressed Boy Training

a Poodle Maneville
Possibly Shoenau & Hoffmeister
German - 1895 - 13" L
Condition: Very Fine (minor dog fur loss)
Estimate: \$500 - \$700

The dog moves up and down as the young man simulates training him. A bell on his right sleeve rings faintly. The dog is wood with fur attached, the boy with a bisque head.





Lot 219
The Friendly Pig

Roulet & DeCamp
French - 1910 - 12" L
Condition: Pristine Plus
Estimate: \$900 - \$1200

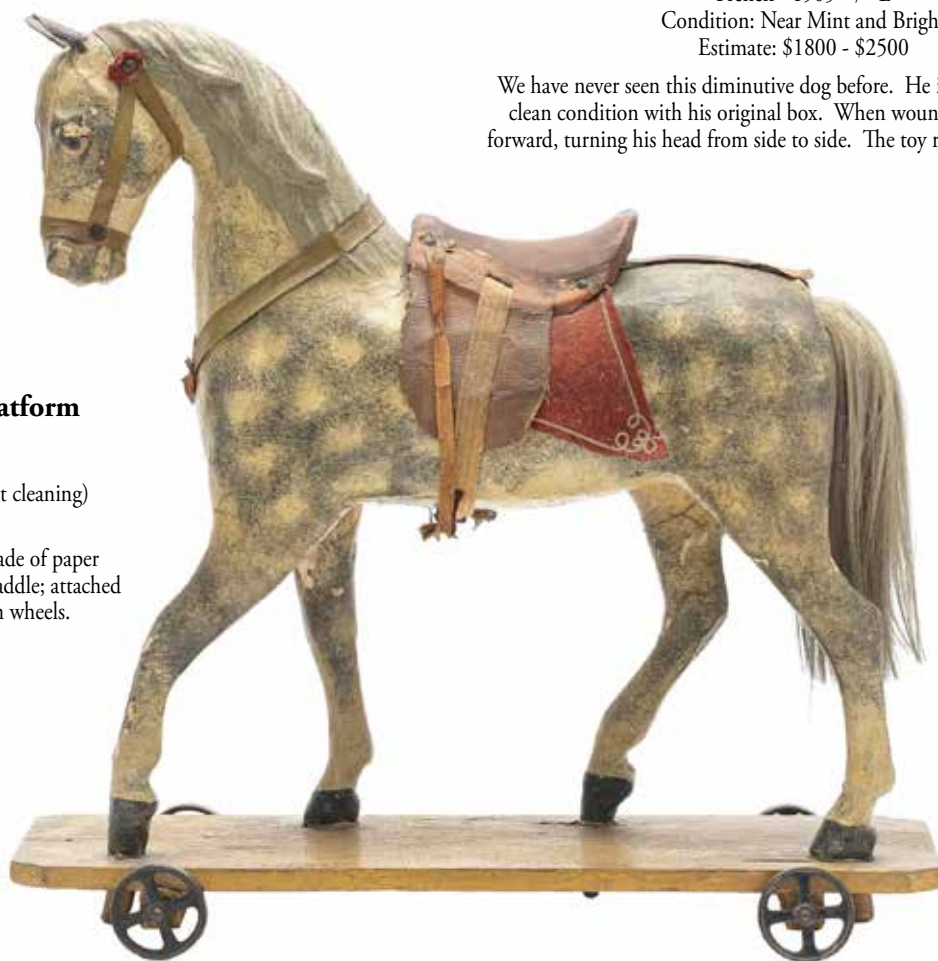
This is a far superior and clean example of this really cute French toy. Made of paper mache, simulated skin hide and silk. When wound she walks, her head turns and she "oinks". She has glass eyes. The toy works very well.



Lot 220
Pug Dog with Original Box

Roulet & DeCamp
French - 1905 - 7" L
Condition: Near Mint and Bright
Estimate: \$1800 - \$2500

We have never seen this diminutive dog before. He is in far superior and clean condition with his original box. When wound he proudly walks forward, turning his head from side to side. The toy retains its original key.



Lot 221
Dappled Horse on Platform

German - 1915
17.5" W x 17.5" T
Condition: Fine (could use a light cleaning)
Estimate: \$350 - \$450

This charming dappled horse is made of paper mache, gesso; with leather ears and saddle; attached to a wooden base with cast iron wheels.



Lot 222
The Spanish Dancer

With Tambourine
 Probably Roulet & DeCamp
 French - 1890 - 20.5" T
 Condition: Excellent Plus
 Estimate: \$1500 - \$2000

When operated, this young woman turns back and forth, stamps her left foot, twirls her tambourine, turns her head and moves her eyes. She is in Excellent Original Condition. The mechanism works via hand cranking or with a key. The automaton works well.



Lot 223
Seated Young Woman

With Acrobatic Poodle
 Made by Vichy
 French - 1890 - 21" T
 Condition: Excellent Plus
 Estimate: \$3000 - \$4000

This is an attractive and well constructed automaton. When music plays, she nods her head side-to-side and forward, taps her right foot against the stool, lifts her arms as the poodle jumps through the hoop. Made with a Tete Jumeau 4 bisque head, with blue glass paperweight eyes, lushly painted lashes and eyebrows. With accented nostrils, an open mouth, shaded lips, six porcelain teeth, pierced ears and a human hair wig. In Excellent Condition and she works very well.



Lot 224
Lineol Kubelwagen

German - 1935 - 9.25" L
Condition: Excellent Plus
Estimate: \$800 - \$1200

In superb condition with its original figures.
The windup mechanism works well.



Lot 225
Lineol Camouflaged Kubelwagen

German - 1935 - 9" L
Condition: Pristine
Estimate: \$800 - \$1200

In Pristine and bright condition with its original figures.



Lot 226
Mercedes Toy Fuhrer (Hitler) Car

By Tipp & Co.
German - 1935 - 9.25" L
Condition: Excellent Plus (one officer's head broken)
Estimate: \$800 - \$1200

This is a wonderful, good working example of the toy car from an era in
World History that hopefully will never be repeated.



Lot 227
Mercedes Nazi German Officer Car

By Tipp & Co.
German - 1935 - 9.25" L
Condition: Pristine
Estimate: \$800 - \$1200

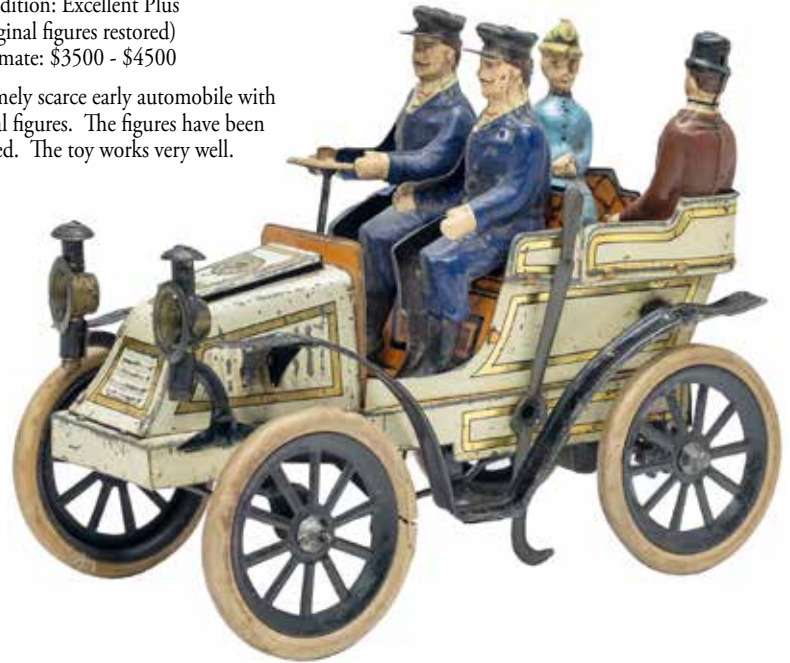
This example with seldom seen tin wheels is in Pristine and bright condition.
It works very well.



Lot 228
Tonneau Open Touring Car

Made by Gunthermann
German - 1904
Condition: Excellent Plus
(original figures restored)
Estimate: \$3500 - \$4500

This is an extremely scarce early automobile with all four original figures. The figures have been well restored. The toy works very well.



Lot 229
Open Touring Car

By Georges Carette
German - 1908 - 6.5" L
Condition: Excellent Plus
Estimate: \$375 - \$500



Lot 230
Horseless Carriage

European - 1898 - 6.125" L
Condition: Very Fine (see description)
Estimate: \$350 - \$450

This is more like a model than a toy. Made of silvered sheet tin, it depicts an extremely early steam-powered horseless carriage. The seat and luggage rack have been reattached long ago. Missing its rubber tires.

Lot 231
Fantastic Early Vis-a-Vis

By Gebruder Bing
German - 1902 - 7.25" L
Condition: Pristine Plus
Estimate: \$9500 - \$12,500



This is one of the finest early toy windup automobiles that we have ever sold. It is in Pristine, Bright and great working condition. The paper mache driver has been replaced.



Lot 232
Four Seat Touring Car

By Gebruder Bing
German - 1904 - 13" L
Condition: Very Fine (see description)
Estimate: \$6000 - \$8000

This is one of the largest and most elaborate toy autos that Gebruder Bing ever produced. All the parts are original, but the entire red body of the toy has been restored. The toy works very well.



Lot 233
Two Young Boys on Sleds

French - 1890 - 5.375" L
Condition: Excellent Plus
Estimate: \$1200 - \$1500

We have never seen these cute little guys before. Made of wood, tin, glass and fabric. Their heads are bisque.



Lot 234
Salem Witch Party Horn

German - 1915 - 8" L
Condition: Near Mint Plus
Estimate: \$550 - \$750

This Halloween party horn is in virtually mint condition and still works well.



Lot 235
Doll Carriage

By Gebruder Marklin
German - 1915 - 8" L x 7" T
Condition: Pristine Plus
Estimate: \$2000 - \$2500

This doll carriage is made by famed toy maker, Gebruder Marklin. It is in superior and bright condition.



Lot 236
Winter Sleigh

Made by Lutz
German - 1890's - 10" L
Condition: Excellent Plus
Estimate: \$4000 - \$6000

The Lutz Company is believed to be the forerunner of famed toy maker Gebruder Marklin. Lutz toys were bright and tended to be delicate.



Lot 237
Gauge "O" Crane Car

By Gebruder Marklin
German - 1915 - 8.5" L
Condition: Very Fine (cable must be connected to pulley)
Estimate: \$300 - \$400



Lot 238
Gauge "I" Crane Car

By Gebruder Marklin
German - 1915 - 8.5" L
Condition: Excellent
Estimate: \$375 - \$500



Lot 239
Live Steam Locomotive - Gauge III

By Ernst Planck
German - 1880's - 8.75" L
Condition: Very Fine
Estimate: \$375 - \$500

The brass boiler, complete with its original burner assembly.
The E. P. Logo stamped on the boiler front.



Lot 240
Incline "Rack" Locomotive - Gauge I

By Gebruder Marklin
German - 1908 - 9" L
Condition: Very Good (see description)
Estimate: \$2000 - \$3000

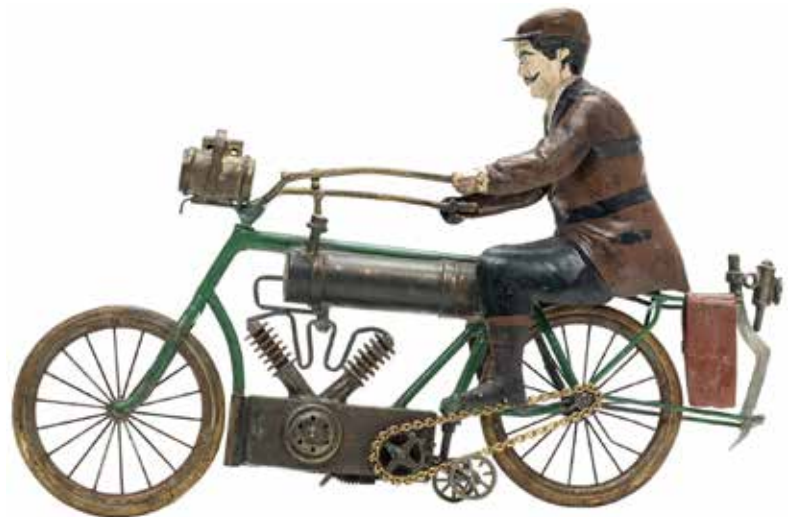
This is a very scarce and desirable clockwork drive Incline Engine. Painted with a green and black body with red and gold trim. Made for a steep incline railway with a cogwheel underneath that engages with a continuous rack fixed between the rails. About 30% restored (mostly trim and cab roof).



Lot 241
Coastal Cannon

by Gebruder Marklin
German - 1920 - 12" W x 9" T
Condition: Very Fine (see description)
Estimate: \$1800 - \$2500

This is one of the larger scaled Coastal Cannons that Marklin produced. Overall in very fine condition. Both original ladders have been reattached and the crane is replaced.



Lot 242
Early Motorcycle

Possibly Spanish - 1915 - 11.75" L
Condition: Very Fine (see description)
Estimate: \$2500 - \$3500

This appears to be an early toy motorcycle assembled from original toy parts. The figure is definitely restored. It was bought in the 1970's by the consignor while traveling in Spain. It is possible that this toy was assembled post 1950 from toy parts. Nevertheless, it works well and has a great look.



Lot 243
Gauge I Freight Train

By Gebruder Marklin
German - 1915 - 38" L
Condition: Fine (see description)
Estimate: \$600 - \$800

A painted tin clockwork O-4-O locomotive with tender and four freight cars. The freight cars include a cattle car, two open door box cars and a guard house box car with sliding door. Overall in fine condition with a ding to the engine boiler and the cattle car has a replaced roof.



Lot 244
Live-Steam "Little Pet" Boat

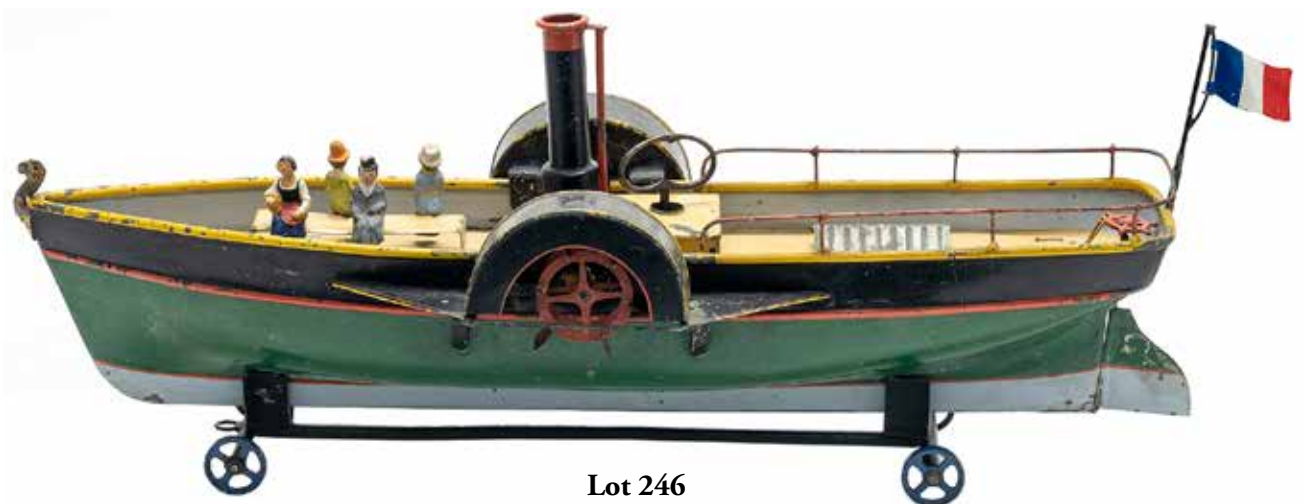
Union Toy Mfg. Co.
Brooklyn, NY - 1875 - 13" L
Condition: Very Fine (with box bottom)
Estimate: \$350 - \$450

Made of sheet brass with a copper boiler. The toy still includes its original operating instructions, its original burner, its pewter fuel funnel, extra wicks and guide string with a wooden handle. The box end with a nice decal of the toy.

Lot 245
Live-Steam Pumper

Made by Buckman Mfg. Co.
New York City - 1872 - 15" L x 9.125" T
Condition: Excellent Plus
Estimate: \$2500 - \$3500

Buckman was one of the earliest steam toy makers in the United States. Made of hand painted tin, brass and a two tone copper boiler. The seat stenciled "Pat. May 2nd 1872". Buckman was acquired by Union Mfg. Co. sometime around 1875. Excellent Plus Condition with original yoke which is rarely found. The hose has been replaced.



Lot 246
Paddlewheel Boat

French - 1890's - 20" L
Condition: Excellent (see description)
Estimate: \$3000 - \$4000

This clockwork boat is possibly by the French toy maker LeVere. The red on the original smoke stack has some overpaint. The toy works very well.



Lot 247
Clown Rollover Car

By Hans Eberl
German - 1920 - 10.5" L
Condition: Very Fine
Estimate: \$1000 - \$1500

This is a fantastic and colorfully lithographed toy. As it moves along a pole descends, gently rolling over the vehicle. It still works well.



Lot 248
Boy Seated in Chair

By Ferdinand Martin
French - 1910 - 7.25" T
Condition: Very Fine
Estimate: \$1400 - \$1800

This is a scarce and very desirable Martin toy that is in very fine and good working condition.



Lot 249
Windup Boxing Toy on Wheels

Made by Einfalt
German - 1920's - 7.5" L
Condition: Very Fine
Estimate: \$400 - \$600

This toy goes back and forth as the momentum causes the boxers arms to throw punches. Probably based upon the Max Schmeling - Joe Louis fight held in June 19, 1936. Schmeling won that fight, but lost two years later in the 1st Round. The toy works well.

Lot 250
"Tripp Trapp" Donkey Dray

Made by Hans Eberl
German - 1920 - 11" L
Condition: Excellent
Estimate: \$1400 - \$1800

This is an extremely scarce and desirable German windup toy. Tripp-Trapp toys are usually made with two human figures and no donkey. This is only the second example that we have seen designed this way. It works very well.



Lot 251
Friction Cadillac

By Kosuge
Japanese - 1955 - 12.25" L
Condition: Excellent (missing a rear bumper guard)
Estimate: \$300 - \$400

The toy is in Excellent Condition and works extremely well. It is missing one rear bumper guard.



Lot 252
C6 Cabriolet Coupe

By Andre Citreon
French - 1932 - 16" L
Condition: Excellent
Estimate: \$1200 - \$1800

This toy is colorful, works well and comes with its original cloth canopy.



Lot 253
Armored Truck

Made by Pinard
French - 1915 - 10.5" L
Condition: Fine
Estimate: \$600 - \$800

Pinard manufactured a line of toy autos and trucks in the period 1900 - 1920. Their production was limited and their toys are scarce. This one in fine condition and working well. Possibly missing a cloth canopy.





Lot 254
Horse Drawn Dray

Made by Nigam
Italian - 1930's - 16" L
Condition: Excellent (not working)
Estimate: \$350 - \$450

The toy is run electrically via a circular control handheld device. It is not presently functioning. Missing half of one ear.

Lot 255
Double Horse Cabriolet

Probably German - 1895 - 18.5" L
Condition: Excellent (see description)
Estimate: \$900 - \$1200

This is an impressive, early, hand painted Cabriolet in Excellent, all original condition. One trace of the front hitch must be reattached to a horse.



Lot 256
Roman Chariot

Marked "Made in Italy"
Circa 1930's - 13" L
Condition: Excellent
Estimate: \$400 - \$600

We have never seen this beautiful Italian toy before. Made of lithographed tin, a hand painted horse, horse hair and a composition figure. The figure is broken down by his ankles. It is a windup toy, but we do not have a key necessary to operate it.



Lot 257
The Chinese Acrobats

By Charles Kellerman (CKO)
German - 1930 - 9" L
Condition: Very Fine (not working)
Estimate: \$225 - \$300

A scarce and delicate toy with wonderful graphics. Presently not working.



Lot 258
Early BiPlane

Made by Cardini
Italian - 1920 - 6.5" L
Condition: Excellent (missing winding stem)
Estimate: \$550 - \$750

The toy is sometimes found with its original box. That box can be opened and turned into a hanger. The winding stem of this delicate toy is missing, but it appears to function and have its internal parts.



Lot 259
Billiard Player

By Gunthermann
German - 1920 - 11" L
Condition: Fine
Estimate: \$375 - \$500

The toy is handpainted and works well.



Lot 260
Matador & Bull

By Einfalt
German - 1930 - 6.25" L
Condition: Excellent
Estimate: \$150 - \$200

A wonderful hand operated toy depicting a bull charging a matador, "Ole".



Lot 261
Horse & Jockey

on a Rocking Base
Italian - 1930's - 7" L
Condition: Near Mint Plus
Estimate: \$175 - \$250

This toy with wonderful lithography is in virtually mint condition and works well.

Lot 262
Clown Riding Tricycle

French - 1890

15" L x 14" T

Condition: Excellent (see description)

Estimate: \$3500 - \$4500



This is an impressive, detailed and delicate French windup toy. Made of lead, sheet tin, with silk clothes and a composition head. The toy works very well. His silk clothing is frayed and torn in places.

Lot 263
Open Carriage

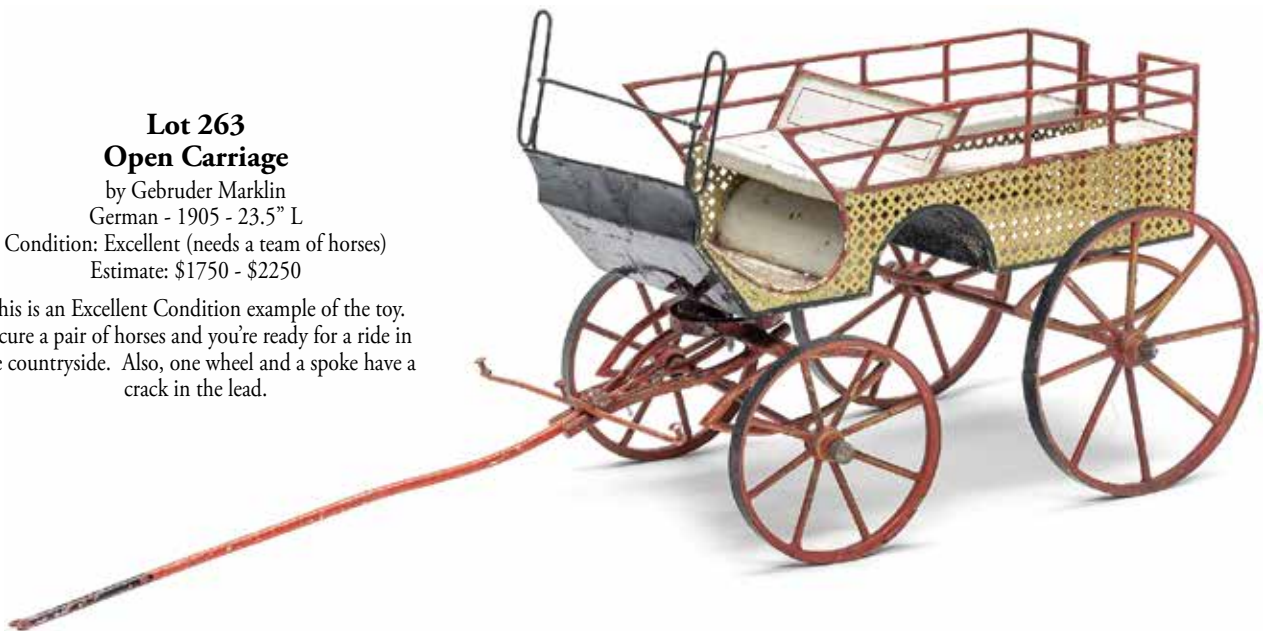
by Gebrüder Marklin

German - 1905 - 23.5" L

Condition: Excellent (needs a team of horses)

Estimate: \$1750 - \$2250

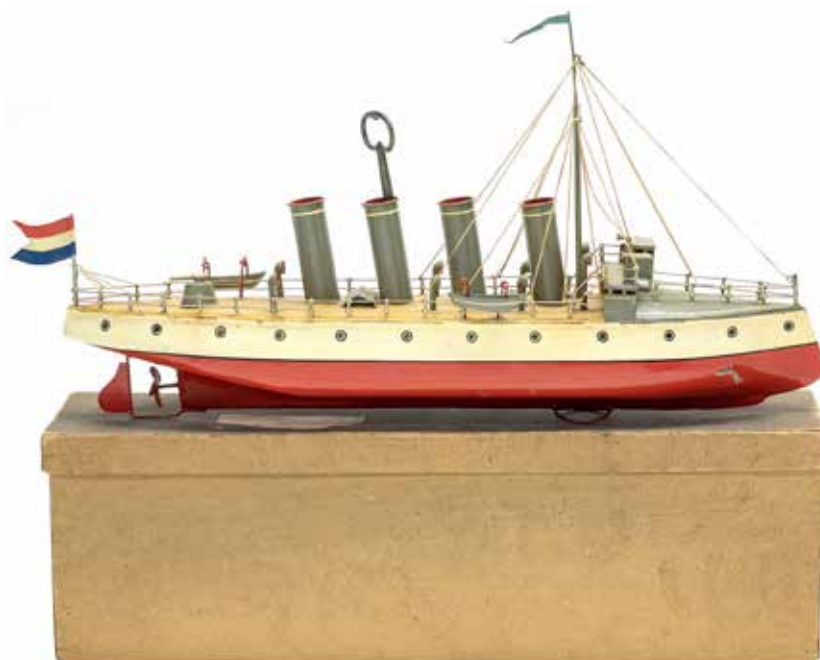
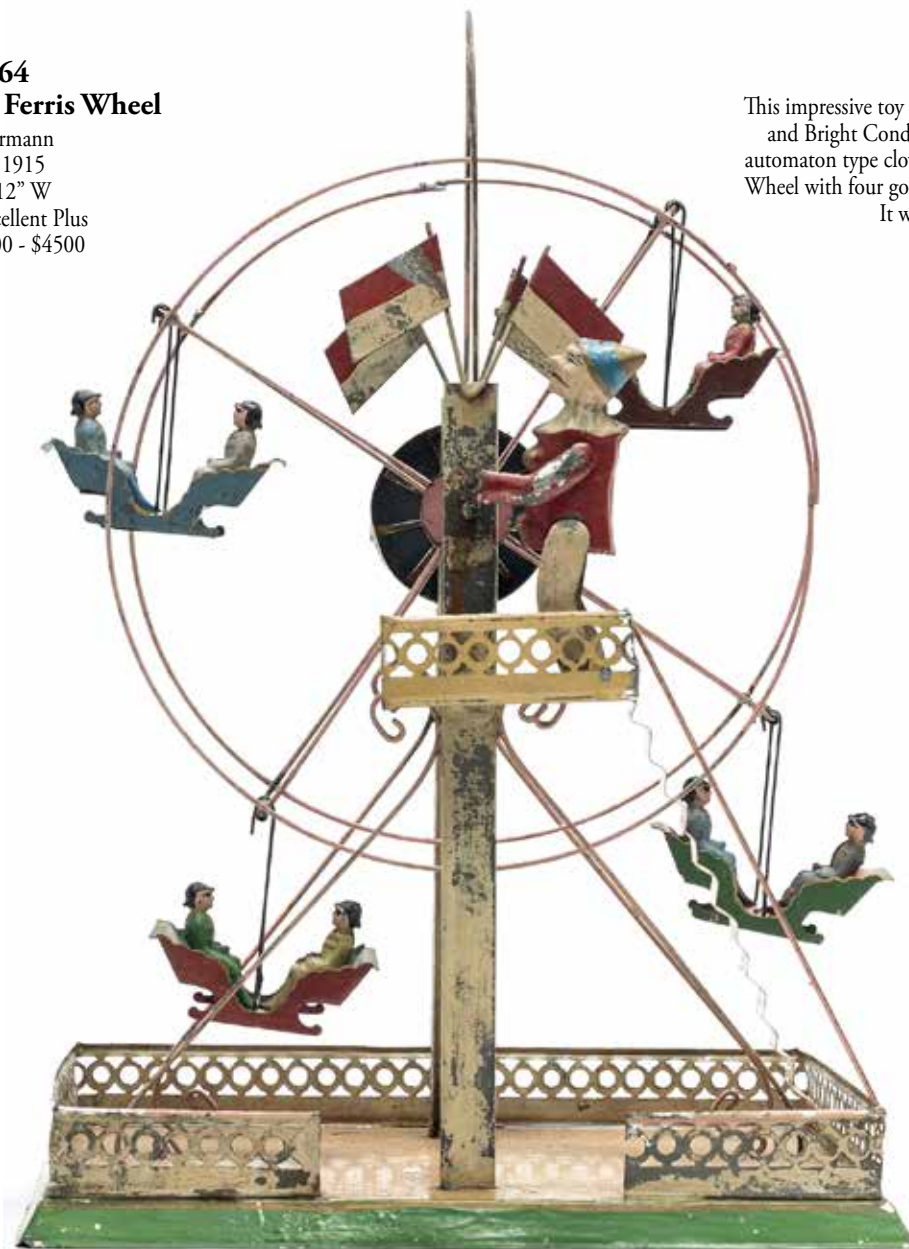
This is an Excellent Condition example of the toy. Secure a pair of horses and you're ready for a ride in the countryside. Also, one wheel and a spoke have a crack in the lead.



Lot 264
Clown Cranked Ferris Wheel

By Gunthermann
 German - 1915
 15.5" T x 12" W
 Condition: Excellent Plus
 Estimate: \$3000 - \$4500

This impressive toy is in Excellent all Original and Bright Condition. It depicts a large automaton type clown hand cranking a Ferris Wheel with four gondolas and eight children. It works well.



Lot 265
Gunboat with Original Box

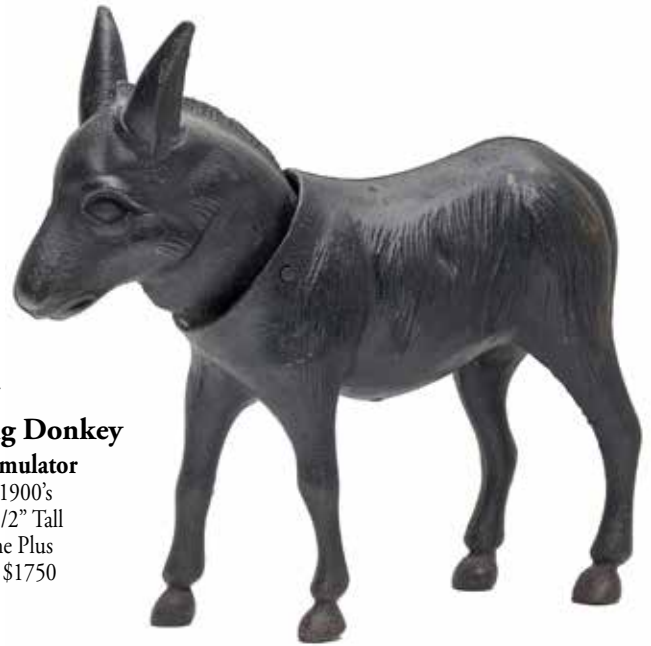
Possibly Issamauer
 German - 1915 - 20" L
 Condition: Excellent with Box (see description)
 Estimate: \$3000 - \$4000

This gunboat in wonderful working condition with its original cardboard box. It flies a replaced flag from the Netherlands. All reds on this boat have been restored.



Lot 266
Rare Fashion Cage Doll

French - Circa 1830 - 6" Tall
Condition: Pristine Original
Estimate: \$2250 - \$2750



Lot 267
Cast Iron Nodding Donkey
Political Trade Stimulator

American - Early 1900's
11 1/2" Long x 8 1/2" Tall
Condition: Pristine Plus
Estimate: \$1250 - \$1750



Lot 268
Winged Lion's Head

Cast Iron Hand Stamp
American - 1895 - 8" Tall
Condition: Pristine Plus
Estimate: \$250 - \$350



Lot 269
An Important Folk Art Diorama
Depicting a Dealer in Horses

English - Circa 1875
22" Long x 14" Tall x 10" Deep
From the Judkyn-Pratt Collection
Condition: Outstanding Preservation & Patina
Estimate: \$4000 - \$6000



This exciting piece of British folk art represents a vignette of rural life as it was lived during Victorian times. One man can be seen leading the horse of his colleague through a muddy patch in the street. While his friend sits comfortably inside the gig which is decorated with advertising that reads "Dealers in Job & Work Horses". Both the walking figure and carriage are carefully affixed to the floorboard of the diorama. It has beautiful muted colors and it is extraordinary in every detail. It comes from the renowned Judkyn-Pratt Collection, true pioneers in the pursuit and scholarship of British Folk Art. A great museum worthy object.



Lot 270
Spread Winged Eagle
Shooting Gallery Target
 By the Mangels Company
 Coney Island, NY - 1920's
 Condition: Fantastic "In Use" Surface
 Estimate: \$1250 - \$1750



Lot 271
Raggedy Ann & Andy Bookends
 By The P. F. Volland Company
 American - Dated 1931 - 5 1/2" Tall
 Condition: Mint and Luminous
 Estimate: \$1750 - \$2250

This pair of figural bookends are absolutely spectacular in design and color. They are seldom found together and never in this breathtaking mint condition.



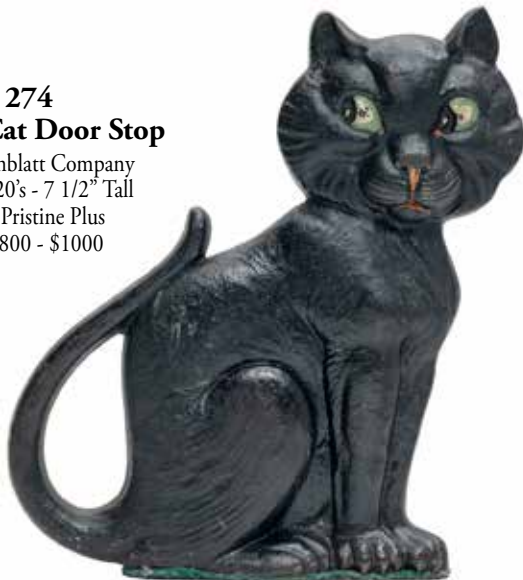
Lot 272
Erotic Frog Paperweights
With Large Male Genitalia
 American - 1930's - 2 3/4"
 Condition: Excellent Plus
 Estimate: \$175 - \$225



Lot 273
Sleeping Cat Door Stop
 Unknown Manufacturer
 American - 1920's - 13 1/2"
 Condition: Pristine Original
 Estimate: \$1500 - \$2000

Lot 274
Halloween Cat Door Stop

By A. M. Greenblatt Company
 American - 1920's - 7 1/2" Tall
 Condition: Pristine Plus
 Estimate: \$800 - \$1000



Lot 275
Christmas Feather Tree Stand
 Germany - 1920's - 9 3/4" Square
 Condition: Pristine Original
 Estimate: \$1200 - \$1500



Lot 276
Pair of Indian Clubs

With Stars & Stripes
American - 1890's - 22" T
Condition: Great & Dry Patina
Estimate: \$750 - \$950

Lot 277
Bust of an Indian Chief

Tobacco Shop Trade Sign
American - 1900 - 22" T
Condition: Sensational Original Paint
Estimate: \$2500 - \$3500

The abstract treatment of the young Chief's hair and headband make for a visually arresting image.
A truly terrific piece of folk art.



Lot 278
"Fleetwing" Sled Salesman Sample

By the Auto-Wheel Coaster Company
N. Tonawanda, NY - 1920's - 19" Long
Condition: Near Mint with Great Patina
Estimate: \$3500 - \$4500

This magnificent salesman's model is made of wood and sheet steel. Auto-Wheel Coaster began to use the brand name "Fleetwing" in 1921. Before that time, they were known as the Buffalo Sled Company.



Lot 279
Wood School Shoes Trade Sign

Pennsylvania - 1900 - 12" W x 20" T
Condition: Great (Slightly Cut Down)
Estimate: \$300 - \$400



Lot 280
Tin Cobbler's Trade Sign

For a Boot and Shoe Maker
New England - 1900 - 14" W x 20" T
Condition: Excellent & Good Surface
Estimate: \$600 - \$800





Lot 281
The Specialty Shop Trade Sign

American - 1910's - 25" W x 13 1/4" T
 Condition: Great Paint and Beautiful Surface
 Estimate: \$550 - \$750

Legend has it that this fancifully lettered shop sign came from a lace & trimmings store in Massachusetts. The artist has deftly silhouetted the black letters with blue in order to create a vibrating optical effect of shadows.

Lot 282
Watches - New and Used

Colorful Wooden Trade Sign
 American - 1910 - 40" W x 18" T
 Condition: Outstanding Quality & Patina
 Estimate: \$2500 - \$3500

The cut shape of this shop sign is highly unusual. The central circular medallion features the bust of a stag with an impressive rack of antlers. This is one of the most colorful and beautiful painted signs we have ever seen.

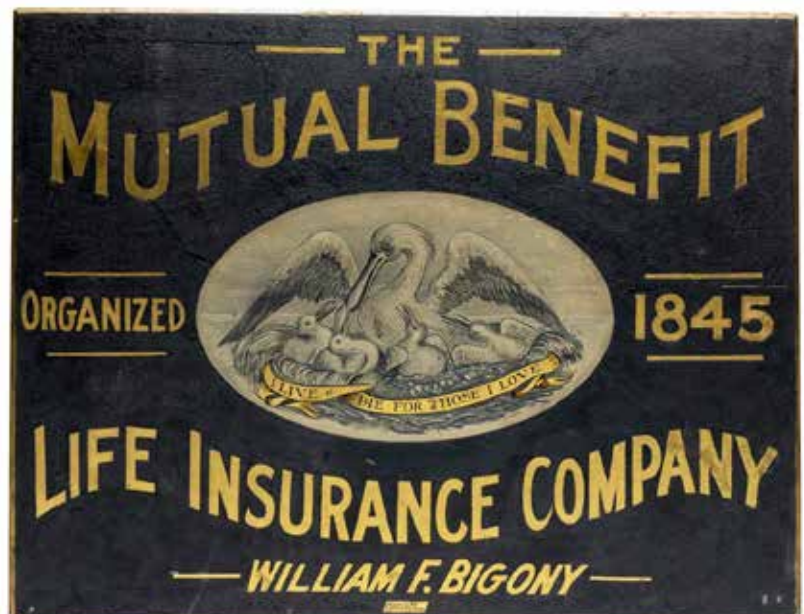


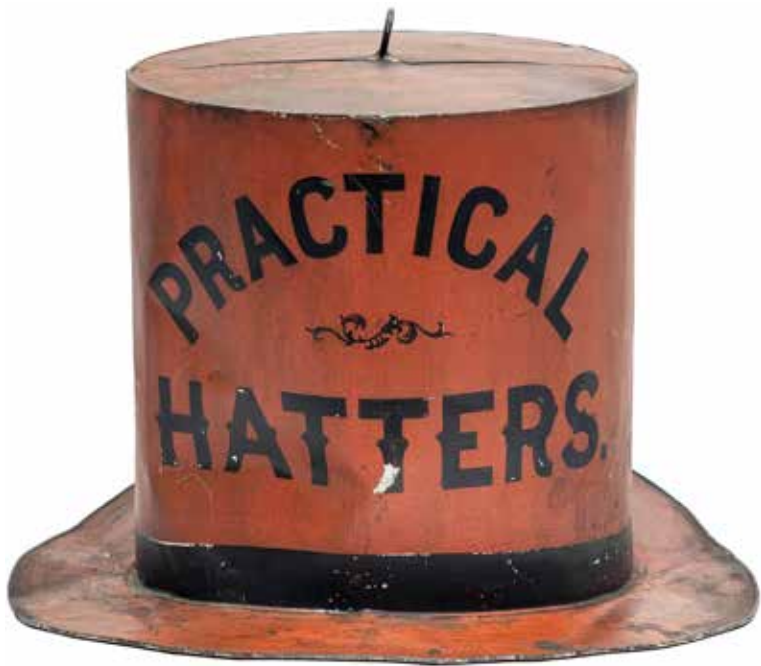
Lot 283
Large & Impressive NEW HOME

Light Running Sewing Machine Sign
 Orange, Ma. - 1920's - 72" L x 13 1/2" T
 Condition: Very Good (pickup only)
 Estimate: \$900 - \$1200

Lot 284
The Mutual Benefit
Life Insurance Company
A Large Wooden Trade Sign
 American - 1890's - 42" W x 33" T
 Condition: Highly Superior with Great Surface
 Estimate: \$3500 - \$4500

The central oval cartouche features a giant mother bird with her wings spread to protect her family. In a banner on the nest, we find the company slogan: I Live & Die For Those I Love. This is a hugely appealing commercial sign.





Lot 285
Tin Milliner's Trade Sign

Made for the Practical Hatters Shop
 Philadelphia - 1880's - 14" T x 18" D
 Ex - Andy Warhol Collection
 Includes Bracket for Wall-Mounting
 Condition: Excellent - Dry Surface
 Estimate: \$4000 - \$5000

Minimal straightforward design coupled with clear readable lettering would have made this sign easy to spot, even at some distance down the street. Let it be said that Andy Warhol possessed an intuitively good eye when it came to object acquisition. This is a real folk art beauty.

Lot 286
Rooster on Orb Weathervane

Possibly by Cushing & White Company
 Waltham, Ma. - 1890 - 22" T x 18 1/2" W
 Very Good Original Condition
 Estimate: \$1750 - \$2250

Standing at attention on the ball, the rooster looks as if he is going to throw his head back and crow the morning's wake up call. This vane will be easy to display because of its manageable size.



Lot 287
Optometrist's Trade Sign

Made of Iron & Sheet Zinc
 American - 1890's - 36" Long
 Condition: Excellent with Outstanding Surface
 Estimate: \$3500 - \$4500

This unusual example of the standard hanging eyeglasses sign uses cut out pupils. Swinging in the wind, the dancing pupils would have added an extra visual effect to capture the attention of pedestrians walking below.



Lot 288
Lady Liberty Weathervane

Unknown Manufacturer
 American - Circa Mid 1930's
 20" Tall x 15" Wide x 1 1/2" Deep
 Condition: Excellent with Verdigris Patina
 Estimate: \$3500 - \$4500

This unusual miniature scaled Lady Liberty vane recently turned up on the north shore of eastern Long Island. In the post-centennial period, the "Lady Columbia" weathervane was produced in a variety of sizes, but we have never before encountered one as small as this. It possesses the exact same characteristic details: a thin left arm that stretches out for balance and a flag-bearing right arm. Additionally, we find her wearing the distinctive Phrygian Cap and diadem of jagged laurel leaves associated with Columbia. It seems that this beautiful vane was made as a WPA era project that exactly replicated the style of the earlier models. The verdigris surface and weathered patina have unquestionable age. All-in-all, a very appealing piece of historic folk art.



Lot 289
Peacock Weathervane

By the A. L. Jewell Company
 Waltham, Ma. - Circa 1870
 30" Long x 16" Tall x 5" Wide
 Condition: Outstanding Verdigris/Gold Surface
 Estimate: \$12,000 - \$15,000

The peacock weathervane is perhaps the most elusive animal form vane in the field. At one time, several different manufacturers offered a peacock as part of their line of products, but very few have made it into the hands of collectors over the many years that vanes have been collected. This extraordinary piece has been consigned to us by a 99 year old woman whose husband was a renowned women's doctor. They decorated his office with vanes and folk sculpture in the mid 1950's. She says they were real pioneers of the hobby. They were friends with and collected alongside the likes of Herbert Hemphill, Barney & Edith Barenholtz and Bill Holland, to name a few. This is a true masterpiece of American Folk Art.



Lot 290
Jolly N Bank - Red Costume

Austrian - Circa Mid 1930's
Condition: Virtually Mint
Estimate: \$950 - \$1250



Lot 291
Jolly N Bank - Blue Costume

Austrian - Circa Mid 1930's
Condition: Mint & Bright
Estimate: \$1200 - \$1500



Lot 292
Jolly N Bank - Magenta Costume

Austrian - Circa Mid 1930's
Condition: Pristine Plus
Estimate: \$800 - \$1000

Research is underway about an Austrian maker of toy banks near Vienna in the period immediately preceding & following WW2. Their output was solely produced in a heavy grade of alloyed aluminum. They painted their banks in a wide array of vivid colors. The magenta specimen is extremely scarce & possibly unique. The blue costumed figure has fascinating red painted fingernails. They are all in hugely superior quality. "



Lot 293
Greedy Boy Money Box

Green Costume & Blue Tie
Attributed Maker is Urlwin
New Zealand - Late 1940's
Condition: Mint with Rare Box - Finest Known
Estimate: \$2250 - \$2750

This magnificent toy bank was brought to Ed Mosler as old shop stock from John Haley of Great Britain. This presents a rare opportunity to acquire a scarce bank in 100% condition.



Lot 294
Aluminum Jolly N with High Hat

Made by R. E. Starkies Ltd.
Lancaster, UK - Mid 1920's
Finest Known Specimen
Condition: Near Mint and Very Bright
Estimate: \$1200 - \$1500

This extraordinary condition bank has been illustrated in several books on the topic. Please note the detail of the finely delineated teeth.



Lot 295
Red Shirt Jolly "N" Bank
Blue Collar & Yellow Tie
 Made for Marks & Spencer
 England - Circa Mid 1950's
 Condition: Mint Condition & Bright
 Estimate: \$950 - \$1250



Lot 296
Dinah Bank - Short Sleeves
 Made by John Harper & Company
 Willenhall, England - Circa Mid 1920's
 Condition: Excellent Plus
 Estimate: \$950 - \$1250



Lot 297
Red Shirt Jolly "N" Bank
with a Narrow Black Tie
 (Unusual Baseplate & Trap)
 Unknown Maker - 1950's
 Condition: Absolutely Mint
 Estimate: \$800 - \$1000



Lot 298
Scarce Aluminum Jolly "N"
 Made by the Mingo Foundry
 Royersford, Pa. - Late 1940's
 Condition: Virtually Mint
 Estimate: \$800 - \$1000



Lot 299
Stump Speaker Bank
 Shepard Hardware Company
 Buffalo, NY - Late 1880's
 Condition: Pristine Plus & Very Bright
 Estimate: \$4500 - \$5500



Lot 300
Important Jolly "N" Bank
Depicted as an Old Man
 Made by the Mingo Foundry
 Royersford, Pa. - Late 1940's
 Condition: MINT & Great Patina
 Estimate: \$1250 - \$1750



Lot 301
Small Jolly "N" Bank

By the Starkie Ltd. Company
Burnley, UK - Circa Late 1940's
Illustrated on Page 151 of Morphy
Condition: Near Mint & Bright
Estimate: \$550 - \$750

Starkie's was one of a handful of toy makers who attempted to promote the classic coin swallowing black-themed toy bank in the modern era. This product was sold as "Sonny Boy" by them.



Lot 302
Rare Darkey Bust Bank

Made by Maienthau & Wolf
Nuremburg, Germany - Circa 1907
Ex - Rudd Trowbridge Collection
Condition: Near Mint Lithography & Bright
Estimate: \$2500 - \$3500

Very few of these tiny tin jewels exist because one has to tear the bank apart to retrieve deposited coins. Spectacular "A+" Condition.



Lot 303
Uncle Tom - No Lapels

By Kyser & Rex Company
Frankford, Pa. - Mid 1880's
Condition: Excellent Plus
Estimate: \$950 - \$1250

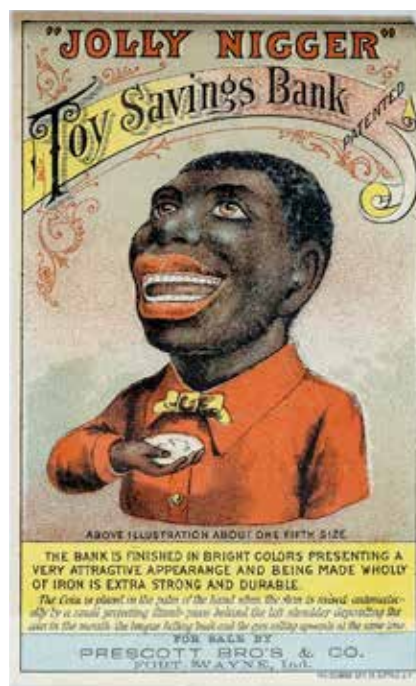
Kyser & Rex often deployed vividly charged color to accentuate the visual beauty of their products. This fiery red example of Uncle Tom provides a perfect illustration of this tendency.



Lot 304
Scarce Aluminum Jolly "N" with
Sergeant Stripes on his Sleeve

By the Starkie Ltd. Company
Burnley, UK - Late 1930's
Condition: Near Mint
Estimate: \$550 - \$750

This snappy soldier represents a WW2 era entry into Starkie's product line.



Lot 305
Jolly "N" Paper Trade Card

Prescott Bro's, Distributors
Fort Wayne, Indiana - 1890's
Condition: Excellent Plus
Estimate: \$500 - \$700



Lot 306
Red Shirt Jolly "N" Bank
Round Holes in Shirt Only

English - Circa Late 1920's
Page 144 in Morphy book.
Condition: Flawless Mint
Estimate: \$950 - \$1250

This was mistakenly identified as being made of aluminum in the book. It is actually cast iron.



Lot 307
Trick Dog Bank - Solid Base

Made by the Hubley Mfg. Company
Lancaster, Pa. - Circa Early 1930's
Condition: Positively Mint
Estimate: \$800 - \$1000



Lot 308
Elephant and Three Clowns

J. & E. Stevens Company
Cromwell, Ct. - Late 1880's
Condition: Very Good (Hairline)
Estimate: \$950 - \$1250



Lot 309
Bill E. Grin Bank

J. & E. Stevens Company
Cromwell, Ct. - Circa 1915
Condition: Excellent Plus
Estimate: \$1250 - \$1750



Lot 310
Clown Bust Bank

By Chamberlain & Hill Ltd.
Walsall, England - 1920's
Condition: Very Good Plus
Estimate: \$4500 - \$5500

Lot 311
Trick Dog Bank - Six Part Base

Shepard Hardware Company
Buffalo, NY - Late 1880's
Condition: Excellent Plus
Estimate: \$2250 - \$2750





Lot 312
Redware Owl Still Bank

Unknown American Maker
Pennsylvania - Circa 1890's
Condition: Excellent Plus with Mellow Patina
Estimate: \$2000 - \$3000 the pair.



Lot 313
Toad on Stump Bank

J. & E. Stevens Company
Cromwell, Ct. - Late 1880's
Condition: Excellent Plus
Estimate: \$950 - \$1250



Lot 312
Stoneware Owl Still Bank

Unknown American Maker
Pennsylvania - Circa 1890's
Condition: Excellent with Good Patina
Estimate: \$2000 - \$3000 the pair.

These rare and important Pennsylvania earthenware still banks clearly draw their design inspiration from J. & E. Stevens' Owl Turns Head mechanical toy bank. They are made of redware and stoneware respectively. Though it is rare, we have seen other examples of the redware bank. However, we have never before seen the stoneware specimen. Furthermore, we have never previously discovered any pottery owl painted as a "white owl" with pale yellow eyes. These banks were owned by twin sisters who died in their late 90's in the 1980's. Thus far, they have spent more than a century together. They are being offered for the first time in many decades as a pair.



Lot 314
Owl Bank - Slot in Head

By the Kilgore Mfg. Company
Westerville, Ohio - Late 1920's
Condition: Pristine Plus
Estimate: \$1750 - \$2250



Lot 315
Bronze Pattern for Owl Turns Head

Made by J. & E. Stevens Company
Cromwell, Ct. - Circa Early 1880's
Ex - Perelman Museum Collection
Stunning Condition and Patina
Estimate: \$3500 - \$4500



Lot 316
Owl Bank - Slot in Book

By the Kilgore Mfg. Company
Westerville, Ohio - Late 1920's
Condition: Excellent Plus
Estimate: \$1200 - \$1500

Because a great amount of detail is lost in the casting process for toy banks, the master pattern, of necessity, had to be overly developed to an extraordinary level of ornate refinement. Today, a small group of advanced collectors pursue such patterns with great enthusiasm. With their mellow burnished patination, they are seen like great works of bronze sculpture.



Lot 317
Powder Blue and Brown Base

Condition: Pristine Plus
Estimate: \$2500 - \$3500



Lot 318
Scarce Pink and Navy Blue Base

Condition: Excellent Plus
Estimate: \$2250 - \$2750

The Frog on Round Base is one of the earliest banks patented by the Stevens Company. It first appeared for sale in the Christmas season of 1872. It became an instant and enduring favorite with children, lasting for more than a decade in Stevens' production line. It was finished with many different base colors; some combinations were very vibrant while others were more subtle. In terms of its design, this frog bank represents something very unique in the world of mechanical banks. The three upright latticework panels are identical to those used by Stevens for its Horse Race Bank. Whether they were developed in tandem or at separate times is unknown. This fascinating instance of industrial ingenuity allowed the Stevens Company to cast parts for two wholly different banks at the same time, thereby lowering their production costs.



Lot 319
Red, White and Green Base

Condition: Near Mint and Very Bright
Estimate: \$3000 - \$4000



Lot 320
Kelly Green and Brown Base

Condition: Mint and Bright
Estimate: \$4500 - \$5500



Lot 321
Billy Goat Bank

J. & E. Stevens Company
Cromwell, Ct. - Circa 1910
Ex - Edwin Mosler Collection
(Minor Mold Flaw on Reverse)
Condition: Pristine Plus
Estimate: \$5000 - \$7000

The muted color scheme chosen for the Billy Goat Bank make it a veritable anomaly among Stevens' otherwise colorful products. A single terra cotta hued flower provides a tiny dab of color amid the messy mass of silver swirling vines and foliage. Authentic period examples of the Billy Goat Bank are as rare as hen's teeth.



Lot 322
Monkey Bank - Coin Slot in Stomach
An Extremely Scarce Polychrome Example

Designed by Charles Ritchel - Bridgeport, Ct.
Unknown Maker - Patented November 7, 1882
Provenance: Edwin Mosler Collection
Condition: Pristine with a Great Patina
Estimate: \$8000 - \$12,000

There are only three extant polychrome examples of this adorable chimpanzee known in the world. The manufacturer for this rarified toy bank has never been identified, nonetheless, at this time, I am going to go on the record and suggest that it was cast by Ives, Blakeslee. Like Ritchel, the bank's designer, the Ives Company was also from Bridgeport, Ct. and the Ives family was known to encourage local inventors to submit projects to them. This seems like a very plausible theory.

Lot 323
Boy and Bull Dog Bank

Rare Polychrome Specimen
By H. L. Judd Mfg. Company
Wallingford, Ct. - Mid 1880's
Provenance: Ed Mosler Collection
Condition: Pristine Plus and Very Bright
Estimate: \$7500 - \$9500

There are fewer than five known painted examples of this bank in the world. All the rest of Judd's production for this "hard to find" bank was executed with their translucent Japanned finishes. This presents even the most sophisticated collector with a golden opportunity to acquire something virtually unique.





Lot 324
Baby Elephant Unlocks
at X O'Clock

Manufactured By Charles Bailey
 Cobalt, Connecticut - Early 1880's
 Provenance: Ed Mosler Collection
 Condition: Pristine with Great Patina
 Estimate: \$20,000 - \$25,000

Before he took command of the Design Dept. at J. & E. Stevens,
 Charles Bailey made a small group of exquisite toy banks cast in lead.

These include: the Springing Cat, Chinaman in Boat, Darkey Fisherman and the Baby Elephant.
 This latter piece was the smallest of these creations, and yet, the level of detail is truly unparalleled. The long front side of the bank is detailed with an image of the elephant dangling a boy above the mouth of a snapping alligator. The boy bemoans the fact that he did not feed any pennies to his toy bank and now he fears for his life. This represents one of the finest examples of this rare bank.



Lot 325
Germania Exchange Bank

(Lead, Tin and Cast Iron)
 J. & E. Stevens Company
 Cromwell, Ct. - Early 1880's
 Condition: Pristine
 (Well Replaced Tin Trap)
 Estimate: \$45,000 - \$55,000



The Germania Exchange Bank appears to be a fascinating collaborative effort between Charles Bailey and the Stevens Company. In fact, it may actually represent Bailey's first assignment for the company. At the very least, he was certainly responsible for the creation of the painted lead goat who grasps a mug of beer in his forelegs. The Germania Exchange is valued as one of the most colorful and significantly rare toy banks in the hobby. This is a real showstopper. It has been chosen for illustration in several books.



Lot 326
Nodding Dog Bank
Attributed to Gebruder Bing

Nuremberg - Early 1900's
 Perelman Museum Collection
 Condition: Excellent
 Estimate: \$4000 - \$5000

There are fewer than five known extant examples of this charming toy bank that depicts the faithful service dog. Coins deposited in his rescue pack will cause his head to nod thanks.

Lot 327
The Erotic Pig Bank

Unknown Manufacturer
 American - Circa 1920's
 Condition: Pristine Plus
 Estimate: \$2000 - \$3000

Only a scant handful of these odd and unusual nickel-plated critters are known to exist. It is often referred to as the "Chrysler Pig" because Walter Chrysler was the first collector to acquire the bank. When the tail is pushed down, the pig's genitalia descends between his hind legs.



Lot 328
Donkey and Silo Bank

Unknown Manufacturer
 English - Circa 1910's
 Condition: Excellent Plus
 Estimate: \$3000 - \$4000

This fascinating sheet metal toy bank is extremely hard to find and add to your bank collection. Large English copper pennies can be deposited through the tower's aperture when the donkey leans forward and kicks his hind legs out. This particular example of the bank has the added charm of a small brass plaque that identifies the owner as "Wee Joe". Beautiful quality.





Lot 329
Bread Winner's Bank

Designed By Charles Bailey
 By J. & E. Stevens Company
 Cromwell, Ct. - Circa 1886
 Excellent Plus Original Condition
 (Minor Hairline on the Laborer)
 Presently not Working
 Estimate: \$25,000 - \$35,000

The Bread Winners Bank came into being during a time of unique socioeconomic pressure. It directly addresses many aspects of labor history as it relates to newly arrived immigrant populations and their ability to fit themselves into the American workforce. At first glance, the symbolic meaning of this vibrant bank may seem esoteric and remote. We need to break down the imagery in stages. Who are these three men and what is their relationship to each other? Why does the man at the right carry a sledge hammer? Why does the puny man in the middle wield a giant primitive club marked "MONOPOLY"? And finally, why is the third man characterized merely as a disembodied head peeking out from a bag of money? One should also ask who are the "rascals" and why must they be "sent up"?

Answering these questions, one soon sees that the imagery portrayed in the Bread Winners Bank derives from the period debate as to the harmful nature of monopolies in postbellum America. It directly alludes to the Sherman Antitrust Act of 1886, which enables the federal government to break up and dismantle any business concerns that were perceived as having disadvantageous monopolistic features deemed detrimental to the public. At the same time, it clearly points to the rise of Unionism and the emergence of Jewish activist labor leaders such as Samuel Gompers. In fact, it references a full spectrum of social stratification and human existence.

In this context, we can now recognize the hammer toting figure as an iconic representation of the American Worker. He is portrayed with a bulging musculature that indicates his brute strength. Such immigrant workers took factory jobs that compelled them to work tirelessly for long hours. These men are depicted as earning honest wages and this is patently illustrated by his nearness to the "Honest Labor Bread" at his feet. In stark contrast, at the other end of the bank, the greedy factory owner is found head-deep in a bag of money marked with the negative epithets "Boodle, Steal & Bribery". His millions have been earned at the urgent expense of his workers. Caught in the middle is a small man whose features can only be described as Semitic. He wears his hair with the uncut curling sideburns and distinctive long beard of Orthodox Jews. Additionally, so there can be no doubt as to his "Jewishness", he wears a yarmulke. He tries to reconcile the disparate interests of factory ownership (capitalism) with those of the immigrant workforce (socialism). However, he has been tasked with an impossible mission. He will never be able to fully satisfy the requirements of either side, and therefore, they flip him upside down as a punishment. He is the "rascal".



Lot 330
Soldier with Spiked Helmet

By the J. & E. Stevens Company
Cromwell, Ct. - Circa Mid 1880's
Provenance: Mosler Collection
Condition: Very Good Plus
Estimate: \$3500 - \$4500

For years, collectors have wrongly believed that this bank was made in Germany simply because it portrays a Prussian marksman wearing a spiked helmet. In reality, it was produced by the Stevens Company and marketed to foreign distributors. Very very few authentic examples of this bank exist. It's a genuine museum quality acquisition.

Lot 331
U. S. and Spain Bank

J. & E. Stevens Company
Cromwell, Ct. - Circa 1898
Condition: Pristine Plus
Estimate: \$12,000 - \$15,000

The imagery for this toy bank clearly derives from the military engagement between the United States and Spain in the spring months of 1898. Pennies carefully placed in the slot are deposited into the bank when the wooden missile shot from the cannon smashes the mast, ostensibly sinking the ship. The cannon power of the United States easily prevailed over the Spanish Navy.



Lot 332
Tommy Bank

John Harper & Company
Willenhall, England - Circa 1914
Condition: Excellent Plus
Estimate: \$3500 - \$4500

British military historians have long debated the precise origin of the appellation "tommies" as it relates to the narrative of the average English soldier. Tommy Atkins, a brave and resolute foot soldier from the 32nd Regiment, heroically tried to hold his position during the Sepoy Rebellion in India in 1857. Of course, he was overwhelmed and killed, but many critical testimonials as to his bravery circulated in the British newspapers for months. This is one theoretical supposition.



Lot 333
The King Aqua Bank

a.k.a. Afrika Spar Bank

Unknown European Manufacturer
 Probably Austrian - Circa Mid 1890's
 Condition: Excellent & Good Patina
 Estimate: \$70,000 - \$90,000

The King Aqua Bank references the strained economic and geopolitical relations that sprang up between Europe and Africa during the late 19th century. This most frequently involved a forced and unwanted colonization by countries that included England, Russia, France, Belgium and Germany. These ostensibly "civilized nations" insinuated themselves into the fabric of indigenous tribal culture in a manner that can only be described as self-serving and bellicose. Their aim was to take control of the plentiful valuable natural resources found on the continent and to establish vast unbreakable monopolies in commodities such as copper and diamonds. Considered in this context, the imagery portrayed in the King Aqua Bank becomes easy to decipher. The menacing presence of Europe is clearly represented by the rifle-toting Imperial marksman who takes aim at the defiant tribal leader, King Aqua. The Chief, whose broad open mouth the coins are shot through, protects his beloved queen by hiding her safely inside the red and white striped tower. In fact, we only discover her presence when coins forcibly shake the tower window open.

There are only four known extant specimens of the King Aqua Bank. This particular example was first discovered by John Haley and Gerhard Riegraf at an auction in Switzerland in the mid 1980's. Shortly thereafter, Steve Steckbeck of Fort Wayne, Indiana acquired the bank for his prestigious collection. This offering gives prospective buyers a chance to acquire one of the rarest and most significant toy banks in the hobby.



Lot 334
Dog on Turntable - Ebony Finish

By H. L. Judd Mfg. Company
 Wallingford, Ct. - 1880's
 Condition: MINT & Bright
 Estimate: \$2500 - \$3500

Seldom does a collector discover a bank in virtually brand new condition like this magnificent specimen. The japanned finish is super thick and lustrous.



Lot 335
Bird on the Church Roof

Made by J. & E. Stevens Company
 Cromwell, Ct. - Circa Late 1870's
 Condition: Pristine Plus
 Estimate: \$8000 - \$10,000

With its minimalist folk art silhouette, there can be no doubt that the Bird on Roof is one of the most engagingly designed banks ever produced. Coins balanced carefully in the crest feathers of the bird are deposited through the church's chimney when the wire lever is pushed. This is truly one of the nicest quality specimens of this bank to ever cross the auction block.



Lot 336
The Mosque Bank
Rare Copper Plated Finish

Made by H. L. Judd Company
 Wallingford, Ct. - Circa 1880's
 Finest Known in the World
 Condition: MINT with Great Green Wash
 Estimate: \$12,000 - \$15,000

Clearly, the designers at Judd were well versed in Victor Hugo's tragic narrative of Quasimodo living in the bell tower of Notre Dame in Paris. However, here the hunchback is portrayed more as a misshapen ape than a human being. Place pennies squarely on the tray he holds above his head and he will happily caper inside the church to deposit your coins. His beloved Esmerelda can be seen as a finial on the rooftop clutching a wreath. This rare copper plated specimen of the bank is the finest we have ever seen.



Lot 337
Cat and Mouse - Aggressive Cat

Made by J. & E. Stevens Company
 Cromwell, Ct. - Circa Early 1890's
 Condition: Outstanding Quality - Finest Known
 Estimate: \$12,000 - \$15,000

It has long been suggested that this ferocious version of the Cat and Mouse Bank represents the original concept developed by the designers at the Stevens Company. However, after testing the bank among local residents, it was discovered that children were frightened by the "mouse devouring" cat. They returned to their design studio and transformed the original bank into an innocuous depiction of cat and mouse at play, sort of like Tom & Jerry.



Lot 338
Perfection Registering Bank

Made by J. & E. Stevens Company
 Cromwell, Connecticut - 1900's
 Condition: Pristine & Great Patina
 Estimate: \$17,500 - \$22,500

Several years back, the mysterious symbolism of the Perfection Bank was decisively decoded by Oliver Clark. His theory identifies The Wizard of Oz as the true source of the bank's imagery. Certainly, many of the narrative elements from Frank Baum's classic tale of self discovery are clearly in evidence. Dorothy and Toto can be seen walking (albeit backwards) down the yellow brick road. The Cowardly Lion is found cowering in the foliage on the side of the bank and the floppy imbalanced Scarecrow is shown front and center, ineffectively trying to frighten the crows away.





Lot 339
Yellow Taxi Still Bank

with Rare Bold Stripe
Arcade Mfg. Company
Freeport, Illinois - 1928
Condition: Excellent Plus
Estimate: \$950 - \$1250

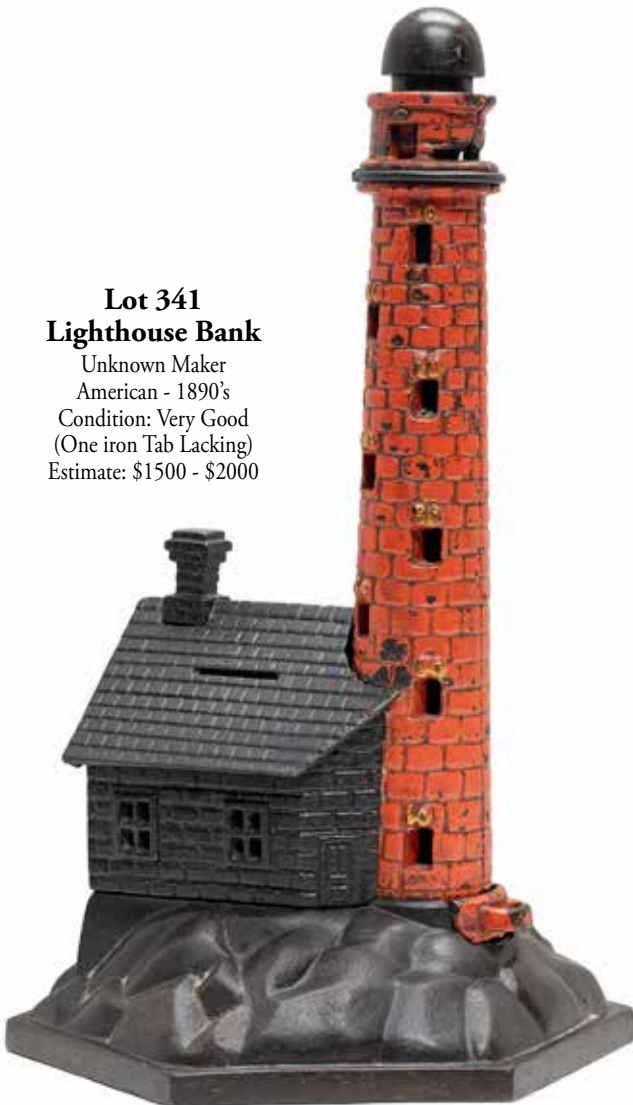


Lot 340
Bank of New York

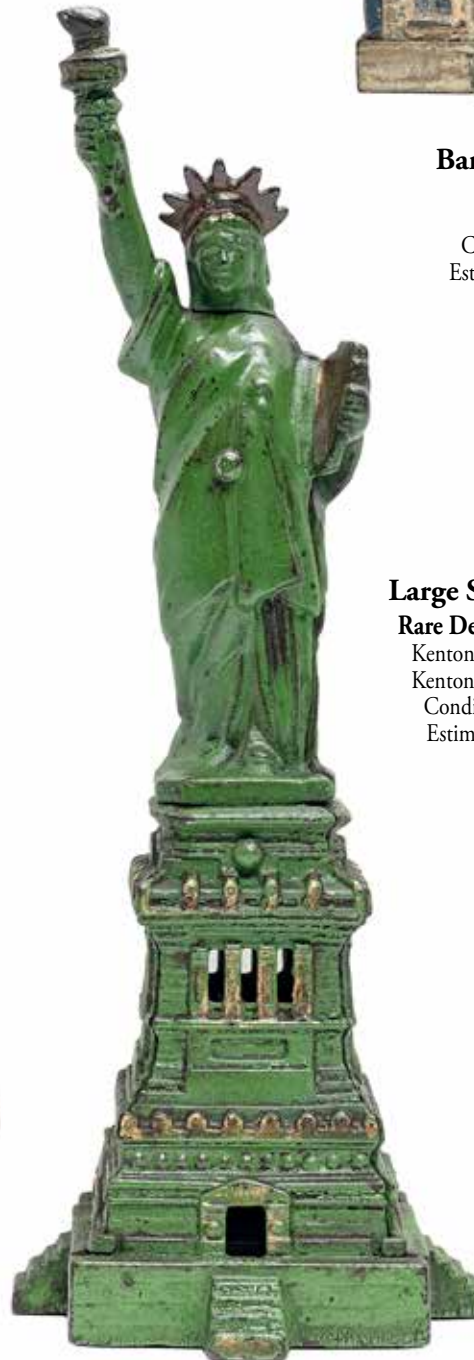
Unknown Maker
English - 1890's
Condition: Excellent
Estimate: \$950 - \$1250

Lot 341
Lighthouse Bank

Unknown Maker
American - 1890's
Condition: Very Good
(One iron Tab Lacking)
Estimate: \$1500 - \$2000



Cleverly, the Lighthouse Bank can save coins both as a still bank through the slot in the keeper's cottage roof and as a semi-mechanical registering bank for nickels only in the red tower.



Lot 342
Large Statue of Liberty
Rare Deluxe Painted Finish

Kenton Hardware Company
Kenton, Ohio - Circa 1920's
Condition: Excellent Plus
Estimate: \$2000 - \$3000



Lot 343
Leap Frog Bank

Shepard Hardware Company
Buffalo, NY - Early 1890's
Condition: Excellent Plus & Bright
Estimate: \$2500 - \$3500

Sometimes, mechanical banks portray small vignettes from a child's life. Here, for example, we find two boys playfully leap-frogging over each other's backs. To operate the bank, set the standing figure behind the boy who is bent over. Place a penny in the slot at the top of the tree stump. Pressing the activation button found on the back of the bank causes the boy to make his dramatic hop over his friend's back.

Lot 344
Boys Stealing Watermelons

Made by Kyser & Rex Company
Frankford, Pa. - Late 1880's
Condition: Excellent Plus
Estimate: \$2250 - \$2750

Two boys have spotted watermelons growing in the yard of a neighboring farmer. Watch as they each try to steal a melon without waking the guard dog slumbering in his house. The boy on his stomach inches forward while his friend ducks under the fence, already clutching his prize. As the lever is pressed, the boy's right arm lowers and the dog jumps out at him.



Lot 345
The Dentist Bank

J. & E. Stevens Company
Cromwell, Ct. - Circa 1890
Condition: Excellent Plus
Estimate: \$5000 - \$7000

The Dentist Bank belongs to a small group of banks that are designed and presented on pedestals. Additionally, it is one of the only toy banks featuring a black figure that has no racist content beyond conventional humor. As the dentist tries to extract a recalcitrant tooth, the chair back breaks, tipping the patient over.



Lot 346
Hall's Tammany Bank

J. & E. Stevens Company
Cromwell, Ct. - Mid 1870's
Condition: Pristine Plus
Estimate: \$1200 - \$1500

Here is an absolutely sublime example of Stevens' iconic seated fat man swollen by his insatiable greed and flair for larceny.



Lot 347
Artillery Bank - Union Soldier

J. & E. Stevens Company
Cromwell, Ct. - Circa 1892
Condition: Pristine & Bright
Estimate: \$3500 - \$4500

Upon its release in 1892, Stevens' painted version of the Artillery Bank became a huge sensation with children and adults alike. Even today, those who operate the bank find its dynamic action hard to resist, playing it over and over. A real beauty.



Lot 348
Mule Entering the Barn

J. & E. Stevens Company
Cromwell, Ct. - Mid 1880's
Condition: Pristine Plus & Very Bright
Estimate: \$3000 - \$4000

The vividly colored "Mule Entering Barn" bank portrays a comical vignette from late nineteenth century rural farm life. A powerful brass spring effectuates the action. Pennies placed between the mule's hind legs are deposited when he flips forward into the barn. At the same time, a small dog runs out from beneath the floorboards.



Lot 349
Queen Victoria Bust

Unknown Manufacturer
England - Reg'd. 1897
Condition: Excellent Plus
Estimate: \$4500 - \$5500

This represents a late twentieth century copy of an exceptionally rare and historically significant subject. Authentic specimens of this bank have sold for more than \$50,000.



Lot 350

Schley Bottling Up Cervera

Unknown American Maker - Circa 1900

Condition: Excellent with Original Decals

Estimate: \$17,500 - \$22,500

The imagery for the "Schley" bank is drawn from naval details relating to the short-lived skirmish between the United States and Spain in the Battle of Santiago de Cuba. Admiral Pascual Cervera, commander of Spain's Cuba Squadron during the Spanish-American War, felt certain that America's naval presence in Cuba was vastly superior to that of the Spanish Navy. His fears were not unfounded. On the morning of July 3, 1898 Cervera attempted to steer his fleet of four armored cruisers and two destroyers strategically past the American blockade of the harbor. However, Rear Admiral Winfield Scott Schley had rehearsed meticulously for just such a maneuver by the Spanish. The American Navy forces quickly encircled the hobbled Spanish fleet, essentially, "bottling them up", as the bank states. Schley was merciless, sinking all six of the Spanish ships as retribution for the sinking of the USS Maine in Havana harbor earlier in the same year. This is one of the very few toys ever designed based upon the current events of the day. It is an extremely rare piece. At most, perhaps eight examples are known to exist in collections worldwide. Place your coin in the slot provided and quickly jerk it leftward for deposit.

Lot 351

New Bank with Center Lever

Made by J. & E. Stevens Company

Cromwell, Ct. - Circa Mid 1870's

Ex - Max Berry Collection

The Finest Known Example

Condition: Near Mint & Bright

Estimate: \$15,000 - \$18,000

The "center lever" version of the New Bank represents the earliest production for this toy. No one has ever brought forth a theory as to why the Stevens Company made the decision to alter their original design and move the lever beneath the left window. If I were to hazard a guess, I would conjecture that it had something to do with the intrinsic awkwardness of depositing coins with the use of a center lever. Sadly, Stevens also scaled back the paint decoration for the "left lever" version as evidenced here by the beautiful dot decoration on the building corners and the painted tulips to the right and left of the door's lintel. This is an absolutely sublime specimen of this very very rare bank.





Lot 352
Pump & Bucket Bank

Unknown Manufacturer
American - Mid 1890's
Condition: Excellent Plus
Estimate: \$1500 - \$2000

Bank was made for use with dimes only. The lid of the bucket is removable only when \$.50 has been deposited. This example is still working.



Lot 353
Pelican Bank - Man Thumbing Nose

Designed by the John Gerard - Trenton
Made by J. & E. Stevens Company
Cromwell, Ct. - Circa Early 1880's
Condition: Excellent Plus
Estimate: \$2500 - \$3500

A scarce specimen with deluxe gold finish laid over a dark brown japanned surface. Very very superior quality.



Lot 354
Windmill Musical Bank

European - Circa 1920
Music Box Not Working
Condition: Excellent Exterior
Estimate: \$2500 - \$3500

When coins are deposited, the windmill door swings open. Another example of this rare bank sold on eBay quite some time ago for a strong price.



Lot 355
Boy Robbing the Bird's Nest
Scarce Original Bronze Pattern

Made for the J. & E. Stevens Company
 Cromwell, Ct. - Pat'd. Circa 1897
 Perelman Toy Museum Collection
 Magnificent Quality and Patina
 Estimate: \$6000 - \$8000

Here we find the original master pattern for Stevens' classic toy bank, the Boy Robbing Bird's Nest. It features an adventurous inquisitive boy. He has spotted a nest in the branch of a tree. Eager to take a peek, he shimmies up the vines and edges his way out onto the branch. However his weight appears to overtake the strength of the tree limb. It snaps and topples both him and the nest to the ground. The Boy Robbing Bird's Nest was to become one of Stevens' all time best sellers. It had a production run that lasted more than ten years. This is one of the most exquisitely detailed bronze patterns to ever come to market. It provides a real chance to add a great piece of toy bank history to one's collection.



Lot 356
Musical Saving Bank
Soccer Player Medallion

Designed by Alice Reugue
 Swiss Made - Mid 1920's
 Condition: Virtually Mint
 Estimate: \$3500 - \$4500

This scarce musical bank was designed to resemble a small mantle clock. Each bank has a small bronze medallion to represent the clock face. Typically, these medallions feature horses, dogs or specific commemorative sites. However, this medallion depicts a fast running soccer forward who deftly runs with the ball. When coins are deposited, the bank will play a short section from two different songs for you. The bank is preserved in truly exceptional condition.

Lot 357
Indian and Bear Bank

J. & E. Stevens Company
Cromwell, CT - Circa 1890's
Condition: Excellent Plus
Estimate: \$2500 - \$3500



Lot 358
William Tell Bank

J. & E. Stevens Company
Cromwell, CT - Circa 1896
Condition: Excellent Plus
Estimate: \$950 - \$1250

Lot 359
Teddy and the Bear Bank

J. & E. Stevens Company
Cromwell, CT - Circa 1907
Ex - Bill Norman Collection
Condition: Pristine
Estimate: \$5000 - \$7000



Lot 360
White Hen & Chicks Bank

J. & E. Stevens Company
 Cromwell, Ct. - Early 1900's
 Condition: Excellent Plus
 Estimate: \$4000 - \$6000

The hen protects her chicks by tucking them under her formidable wings. Pulling the lever backwards causes the hen to open and close her beak, as if she is crowing. As the penny drops into the bank, a small hatchling emerges from beneath her breast feathers to surprise us.



Lot 361
Rabbit in Cabbage Bank

By Kilgore Mfg. Company
 Westerville, Ohio - 1930's
 Condition: Very Good
 Estimate: \$350 - \$450



Lot 363
Small Standing Rabbit

By Lockwood Mfg. Company
 South Norwalk, Ct. - 1890's
 Condition: Excellent Plus
 Estimate: \$600 - \$800



Lot 364
Large Standing Rabbit

By Lockwood Mfg. Company
 South Norwalk, Ct. - 1890's
 Condition: Excellent Plus
 Estimate: \$2000 - \$2500

Lot 362
Peg Leg Beggar

By H. L. Judd Mfg. Company
 Wallingford, Ct. - Mid 1880's
 Condition: Very Good
 Estimate: \$950 - \$1250

A maimed Civil War veteran sits on a box on the street corner and asks us to pay him alms. He nods thank you just as soon as we gratify his wish.



Lot 365
Rooster Bank

By Kyser & Rex Company
 Frankford, Pa. - Late 1880's
 Condition: Pristine and Very Bright
 Estimate: \$1500 - \$1800



Lot 366
Hall's Lilliput Bank
 Finished in Green & Brown
 J. & E. Stevens Company
 Cromwell, Ct. - Circa 1880
 Condition: Very Good
 Estimate: \$600 - \$800



Lot 367
Dog on Turntable
 Made by H. L. Judd Company
 Wallingford, Ct. - Circa 1895
 Condition: Pristine and Bright
 Estimate: \$2250 - \$2750
 Scarce ebony black japanned finish with strong
 vestiges of the green wash applied to surface.
 Examples with a white painted dog are very scarce
 and desirable.



Lot 368
Hall's Lilliput Bank
 Finished in Red & Yellow
 J. & E. Stevens Company
 Cromwell, Ct. - Circa 1880
 Condition: Pristine Bright Paintwork
 Estimate: \$1000 - \$1500



Lot 369
Hall's Excelsior Bank
 Powder Blue & Brown
 J. & E. Stevens Company
 Cromwell, Ct. - Circa 1870's
 Condition: Excellent Plus
 Estimate: \$950 - \$1250



Lot 370
Hall's Excelsior Bank
 Patriotic Red, White & Blue
 J. & E. Stevens Company
 Cromwell, Ct. - Circa 1870's
 Condition: Pristine and Very Bright
 Estimate: \$1250 - \$1750



Lot 371
Hall's Excelsior Bank
 Scarce Candy Apple Green
 J. & E. Stevens Company
 Cromwell, Ct. - Circa 1870's
 Condition: Excellent Plus
 Estimate: \$1250 - \$1750

Dating to 1869, John Hall's Excelsior Bank has great historical significance as the first mechanical toy bank patented in the United States. During its long checkered production run, it was offered in a broad array of colors. Today, many collectors seek to acquire as many different color variations as they can find. The candy apple green specimen with red and brown details is perhaps the rarest color of all.



Lot 372
Yellow Cabin Bank

J. & E. Stevens Company
Cromwell, Ct. - Mid 1880's
Condition: Pristine & Bright
Estimate: \$1200 - \$1500



Lot 373
Santa Claus at Chimney

Made by Shepard Hardware
Buffalo, NY - Early 1890's
Condition: Excellent
Estimate: \$1200 - \$1500



Lot 374
Green Cabin Bank

J. & E. Stevens Company
Cromwell, Ct. - Mid 1880's
From the Bill Norman Collection
Condition: Excellent
Estimate: \$950 - \$1250



Lot 375
Multiplying Bank
Finished in Patriotic Red, White & Blue

J. & E. Stevens Company
Cromwell, Ct. - 1890's
From Donal P. Markey
Condition: Excellent Plus
Estimate: \$4000 - \$6000

Internally set angled mirrors effectuate the optical trickery that cause the viewer to wrongly conclude that each coin deposited is multiplied three times. Very very clever!!!!



Lot 376
The Novelty Bank
Finished in Red, Yellow and Blue

Made by J. & E. Stevens Company
Cromwell, Ct. - Circa Late 1870's
From Pat & Rich Garthowffner
Condition: Pristine & Very Bright
Estimate: \$4000 - \$6000

To operate this bank, open the door. You will find a bank patron making deposits into the bank from the tray in his hands. A superior example.



Lot 377

The Kick Inn Bank

By Presto Novelty Mfg. Company

St. Louis, Missouri - Early 1920's

Possibly Finest Known Example

Condition: Mint with Original Box

Estimate: \$1500 - \$2000

The Kick Inn Bank is made of varying materials, including wood, tin, paper & leather. It draws its conceptual imagery from the Mule Entering the Barn Bank, made by J. & E. Stevens four decades earlier. However, in this instance, the mule doesn't somersault forward, but rather kicks his back legs out to cause the tin ledge to throw the penny into the Inn. This bank is clearly in extraordinary condition. In addition to the cardboard box, It is being sold with a period promotional Flyer.



Lot 378

William Tell Money Box

Australian - Patented 1930's

Ex - Edwin Mosler Collection

Finest Specimen in the World

Condition: Mint with Original Box

Estimate: \$3000 - \$4000

The folk narrative of William Tell was first cited in a Swiss chronicle from the late 16th century. Tell, who was a renowned marksman with the crossbow, was condemned to death along with his son Robert for refusing to bow when an Austrian prince from the Hapsburg family passed by. The prince offered him redemption in the form of a dare. If he could shoot an apple from his son's head, freedom would be theirs.



Lot 379
Green Magic Bank

J. & E. Stevens Company
Cromwell, Ct. - Late 1870's
Bill Norman Collection
Pristine Bright Paint
Estimate: \$5000 - \$7000

The Magic Bank functions as both a still and mechanical bank. Coins can either be routinely dropped into the slot in the roof or they can be spun around in the teller's tray when you press the button.



Lot 380
Globe Savings Fund

Semi-Mechanical Bank
By Kyser & Rex Company
Frankford, Pa. - Dated 1888
Condition: Excellent Plus
Estimate: \$1500 - \$2000

Arched windows and door frames, along with sculpture niches and gargoyles decorate nearly the entire architectural surface of the Globe Savings Fund bank. Coins deposited through the slot found on the roof can only be retrieved if you know the door's combination. There is also a secret drawer which can function like a safe deposit box.

Lot 381
Cupola Bank

J. & E. Stevens Company
Cromwell, Ct. - Late 1870's
Condition: Excellent
Estimate: \$8500 - \$10,500

The Cupola Bank is arguably the prettiest building bank ever created. The flared foundation with its steep staircase, is a great visual anchor for its cylindrical structure. Ultimately, your eyes drift upwards where you discover two scalloped rooflines, a most pleasing aesthetic outcome. Pressing the door knob causes the cupola to rise on three poles, revealing the bank manager in his office beneath the dome.





Lot 382
Arched Top Cottage Bank

(All Wood Construction)
Germany - Late 1920's
Condition: Pristine Plus
Estimate: \$550 - \$750

Gravity causes the girl to drop her coins through the cashier's window. The colorful flowers found beneath the window imply that your savings will flourish if you become a responsible depositor. We have never seen another example of this bank.



Lot 383
Automatic Wonder Money Box

(Paper Litho, Wood & Cardboard)
Germany - Circa Early 1900's
Ex - Steve Steckbeck Collection
Condition: Excellent Plus
Estimate: \$1750 - \$2250



Lot 384
Rare Flat Top Cottage Bank

(Cardboard, Wood & Paper)
Germany - Late 1920's
Condition: Pristine
Estimate: \$550 - \$750

In this incarnation of the gravity depositing cottage bank, we find a young boy clad in blue. Once again, potted plants and a meandering floral vine are used as symbols of a flourishing bank account if you responsibly save your loose coins.



Lot 385
Fun Producing Scale Savings Bank

Made by the Silver Mirror Company
Chicago, Illinois - Patented in 1918
Condition: MINT with Key & Box
Estimate: \$950 - \$1250

Press a penny into the slot and the sign instantly changes to read "You Are Just One Cent Lighter". To reset for another deposit, push the lever down to its original position.



Lot 386
The Golden Egg Bank

a.k.a. Feed the Goose
Patented August 7, 1928
Ex - Hegarty Collection
Finest Known Specimen
Condition: MINT with Box
Estimate: \$1200 - \$1500

The box carefully instructs the bank's user to deposit only one coin at a time through the bird's mouth. Sadly, the Feed the Goose Bank was made from a brittle metallic alloy that disintegrated very easily over time. Typically, it turns up in deplorable condition, whereas this example is positively exceptional.



Lot 387
Automatic Chocolate Savings Bank
 Decorated with Small Comical Elves
 Made by Stollwerck Bros. Company
 Cologne, Germany - Circa 1900's
 Condition: Excellent Lithography & Patina
 Estimate: \$550 - \$750



Lot 388
The Drumming Pig Bank
 with Windup Mechanism
 Made by Schuco Toys
 Nuremberg - Late 1930's
 Condition: Near Mint
 Estimate: \$800 - \$1000



Lot 389
Railway Ticket Vending Bank
 a.k.a. Bahnsteigkarten Bank
 Made by Gebrüder Marklin
 Germany - 1920's & 1930's
 Condition: Excellent
 Estimate: \$750 - \$950



Lot 390
Circo Equestre Bank

Unknown Spanish Maker
 Circa Mid to Late 1920's
 Ex-Frank Kidd Collection
 Condition: Near Mint with Bright Litho
 Estimate: \$4000 - \$5000

The Circo Equestre is a real colorful charmer with terrific graphics. It is one of the rarest and most difficult tin banks to add to one's collection.

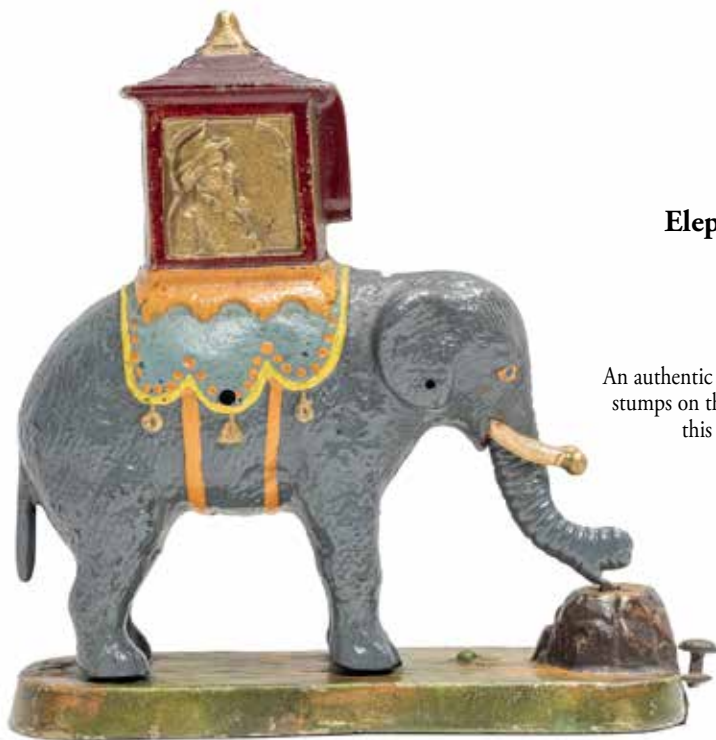


Lot 391
MAGIE Bank

Unknown German Maker
 Circa Mid to Late 1920's
 Condition: Pristine Plus
 Estimate: \$3000 - \$4000

The "Magie" features a dazzling long-bearded wizard. He wears a colorful robe and he dons the iconic pointy peaked cap that we have come to associate with wizardry. Watch as he magically makes your money disappear.





Lot 392
Elephant with Locked Howdah

Later Collectible Forgery

American - Circa 1950's

Condition: Pristine Plus

Estimate: \$950 - \$1250

An authentic period example of this bank must have two tree stumps on the base. In terms of color, the 1950's version of this bank is actually much more attractive.

Lot 393
Eagle and Eaglets Bank

J. & E. Stevens Company

Cromwell, Ct. - Late 1880's

Condition: Near Mint and Very Bright

Estimate: \$2500 - \$3500

To promote the patriotic implications of this bank, the Stevens Company decided to market it as the American Eagle Bank. Operating this bank is a true visual joy. Watch mama eagle drop coins into the nest of her chicks when you push the lever down. This is a magnificent example of the bank.



Lot 394
Elephant & Howdah - Man Pops Up

Made by the Enterprise Mfg. Company

Philadelphia, Pa - Circa Mid 1880's

Condition: Pristine (Needs Serape)

Estimate: \$950 - \$1250

This particular example has been decorated with a very appealing coat of light gray paint. The howdah blanket is painted with the name JUMBO, indicating that it was probably created as a commemorative souvenir of P. T. Barnum's most beloved circus beast.



Lot 395
I Always Did 'Spise a Mule
Boy Seated on Bench Version

J. & E. Stevens Company
 Cromwell, CT - Circa 1897

Condition: Excellent

Estimate: \$900 - \$1200

A young boy has dismounted his mule in order to discipline him. To emphasize his message, the boy waves a rigid stick at the poor beast. However, In the end, it is the mule that gives the boy a lesson. He swings his rear legs around and appears to kick the boy in the face, knocking him over.

Lot 396
I Always Did 'Spise a Mule

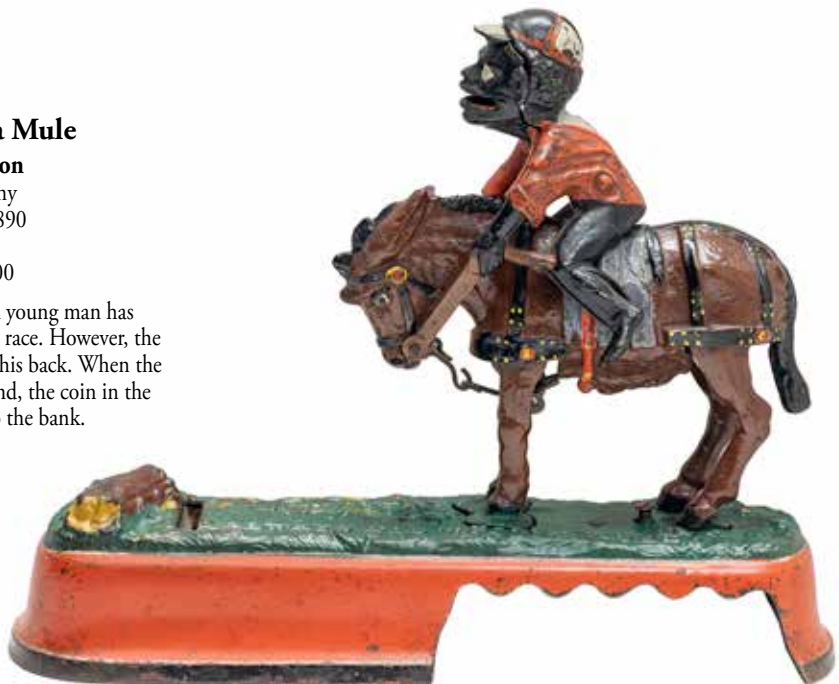
Boy as Jockey Variation

J. & E. Stevens Company
 Cromwell, CT - Circa 1890

Condition: Pristine

Estimate: \$1500 - \$2000

Adorned in his jockey's cap and bib, a young man has hopped on to his animal to ride him in a race. However, the mule has other ideas and throws him off his back. When the visor of his cap hits the log on the ground, the coin in the jockey's mouth is deposited into the bank.



Lot 397
Bad Accident Bank

J. & E. Stevens Company
 Cromwell, CT - Circa 1888

Excellent Bright Paint

(Hairline at front cart rivet)

Estimate: \$1200 - \$1500

While driving his cart to market, the farmer eats a juicy slice of watermelon, neglecting the simple task to guide the mule safely. Suddenly, a small boy emerges from behind the foliage. This frightens the mule, who rears upwards, toppling the cart and thus causing a "bad accident". This is a very superior example of this bank.





